

## CADM4 RABBIT PAB

货号: S214201

产品全名: CADM4 兔多抗

基因符号: NECL4; TSL2; IGSF4C; Necl-4; synCAM4

**UNIPROT ID:** Q8NFZ8 (Gene Accession - NP\_660339)

**背景:** IGSF4C (immunoglobulin superfamily member 4C), also known as CADM4 (cell adhesion molecule 4), NECL4 or TSL2, is a 388 amino acid single-pass type I membrane protein that contains one Ig-like V-type domain and two Ig-like C2-type domains. Expressed in kidney, brain and prostate, IGSF4C exists as both a monomer and a homodimer and is thought to be involved in cell-cell adhesion, possibly playing a role in tumor suppression. Human IGSF4C shares 98% sequence identity with its mouse counterpart, suggesting a conserved role between species. The gene encoding IGSF4C maps to human chromosome 19, which is the genetic home for a number of immunoglobulin superfamily members, including the killer cell and leukocyte Ig-like receptors, a number of ICAMs, the CEACAM and PSG family and Fc receptors (FcRs)

**抗原:** Synthetic peptide of human CADM4

**经过测试的应用:** ELISA, WB, IHC

**推荐稀释比:** IHC: 25-100;WB: 200-1000;ELISA: 1000-2000

**种属反应性:** Rabbit

**克隆性:** Rabbit Polyclonal

**亚型:** Immunogen-specific rabbit IgG

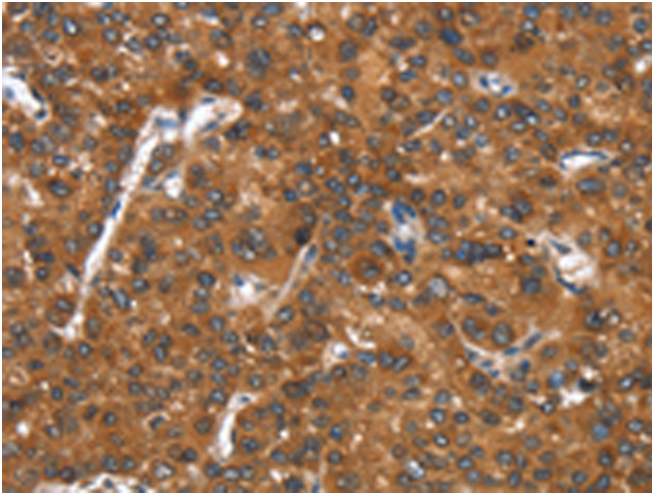
**纯化:** Antigen affinity purification

**种属反应性:** Human, Mouse, Rat

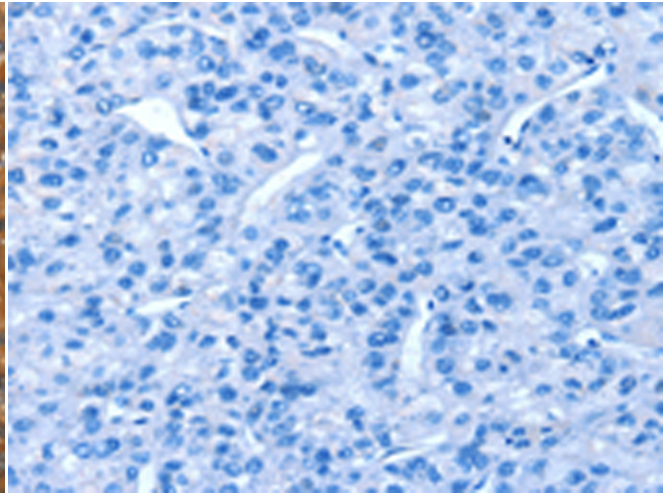
**成分:** PBS (without Mg<sup>2+</sup> and Ca<sup>2+</sup>), pH 7.4, 150 mM NaCl, 0.05% Sodium Azide and 40% glycerol

**研究领域:** Cancer

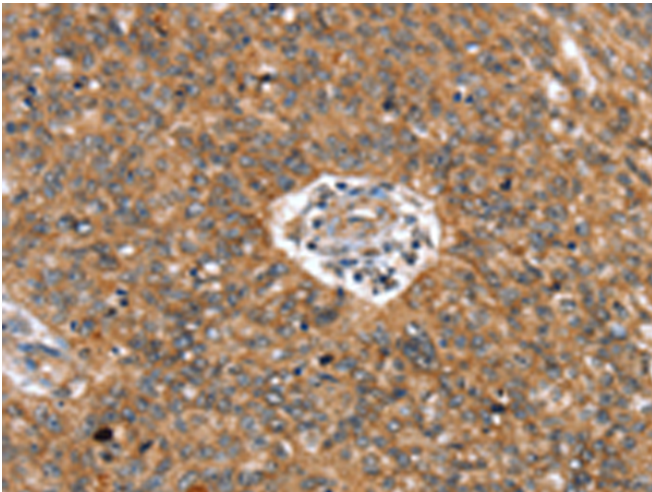
**储存和运输:** Store at -20°C. Avoid repeated freezing and thawing



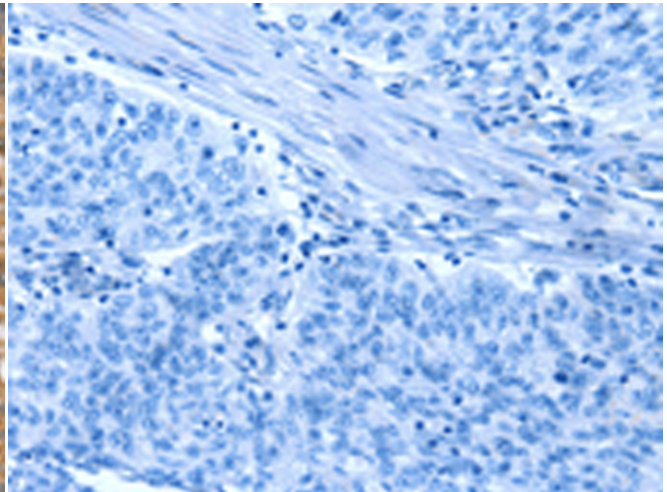
Immunohistochemistry analysis of paraffin embedded Human liver cancer tissue using 214201(CADM4 Antibody) at a dilution of 1/25(Cytoplasm).



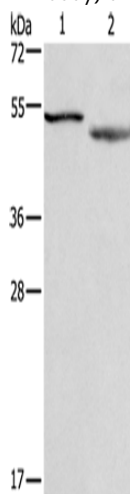
In comparison with the IHC on the left, the same paraffin-embedded Human liver cancer tissue is first treated with the synthetic peptide and then with 214201(Anti-CADM4 Antibody) at dilution 1/25.



The image on the left is immunohistochemistry of paraffin-embedded Human ovarian cancer tissue using 214201(Anti-CADM4 Antibody) at a dilution of 1/25.



In comparison with the IHC on the left, the same paraffin-embedded Human ovarian cancer tissue is first treated with synthetic peptide and then with D161503(Anti-CADM4 Antibody) at dilution 1/25.



Gel: 10%SDS-PAGE, Lysate: 40 µg;  
Lane 1-2: RAW264.7 cells, mouse brain tissue;  
Primary antibody: 214201(CADM4 Antibody) at dilution 1/300;  
Secondary antibody: Goat anti rabbit IgG at 1/8000 dilution;  
Exposure time: 20 seconds



# Product Description

Pioneering GTPase and Oncogene Product Development since 2010

---