

## CADM2 RABBIT PAB

货号: S221715

产品全名: CADM2 兔多抗

基因符号: NECL3; IGSF4D; Necl-3; synCAM2; SynCAM 2

**UNIPROT ID:** Q8N3J6 (Gene Accession - NP\_001161146)

**背景:** This gene encodes a member of the synaptic cell adhesion molecule 1 (SynCAM) family which belongs to the immunoglobulin (Ig) superfamily. The encoded protein has three Ig-like domains and a cytosolic protein 4.1 binding site near the C-terminus. Proteins belonging to the protein 4.1 family crosslink spectrin and interact with other cytoskeletal proteins. Multiple transcript variants encoding different isoforms have been found for this gene.

**抗原:** Synthetic peptide of human CADM2

**经过测试的应用:** ELISA, WB, IHC

**推荐稀释比:** IHC: 30-150;WB: 1000-5000;ELISA: 5000-10000

**种属反应性:** Rabbit

**克隆性:** Rabbit Polyclonal

**亚型:** Immunogen-specific rabbit IgG

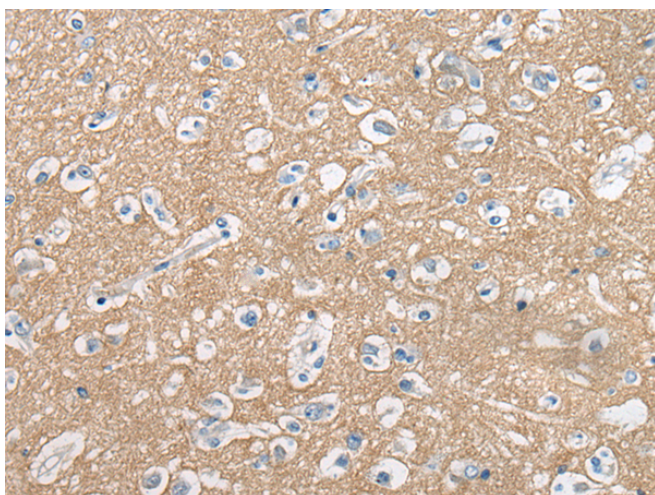
**纯化:** Antigen affinity purification

**种属反应性:** Human, Mouse, Rat

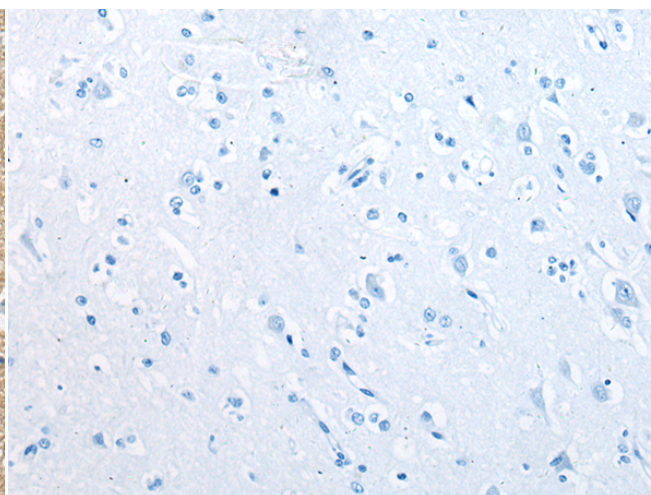
**成分:** PBS (without Mg<sup>2+</sup> and Ca<sup>2+</sup>), pH 7.4, 150 mM NaCl, 0.05% Sodium Azide and 40% glycerol

**研究领域:** Cell Biology

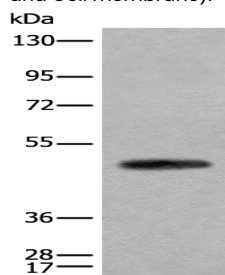
**储存和运输:** Store at -20°C. Avoid repeated freezing and thawing



Immunohistochemistry analysis of paraffin embedded Human brain tissue using 221715 (CADM2 Antibody) at a dilution of 1/45 (Cytoplasm and Cell membrane).



In comparison with the IHC on the left, the same paraffin-embedded Human brain tissue is first treated with the synthetic peptide and then with 221715 (Anti-CADM2 Antibody) at dilution 1/45.



Gel: 8%SDS-PAGE, Lysate: 20 µg;

Lane: Human cerebella tissue lysate;

Primary antibody: 221715 (CADM2 Antibody) at dilution 1/2000;

Secondary antibody: Goat anti rabbit IgG at 1/8000 dilution;

Exposure time: 1 second