

## CADHERIN RABBIT MAB

货号: N262672

产品全名: Cadherin 兔单克隆抗体

基因符号 CDHP; CDHE; HJMD; PCAD; CDHN; P-cadherin; E-cadherin; N-cadherin; Cadherin-1; Cadherin-2; Cadherin-3

**UNIPROT ID:** P12830/P22223/P19022

背景: Cadherins are calcium-dependent cell adhesion proteins (PubMed:11976333). They preferentially interact with themselves in a homophilic manner in connecting cells; cadherins may thus contribute to the sorting of heterogeneous cell types. CDH1 is involved in mechanisms regulating cell-cell adhesions, mobility and proliferation of epithelial cells (PubMed:11976333). Has a potent invasive suppressor role. It is a ligand for integrin alpha-E/beta-7.

抗原: A synthetic peptide of human pan Cadherin

经过测试的应用: WB,IHC-F,IHC-P,ICC/IF,IP

推荐稀释比: WB: 1/500-1/1000 IHC: 1/50-1/100 IF: 1/50-1/200 IP: 1/20

种属反应性: Rabbit

克隆性: Rabbit Monoclonal

克隆编号: R04-5A8

分子量: Calculated MW: 97 kDa; Observed MW: 130-150 kDa

亚型: IgG

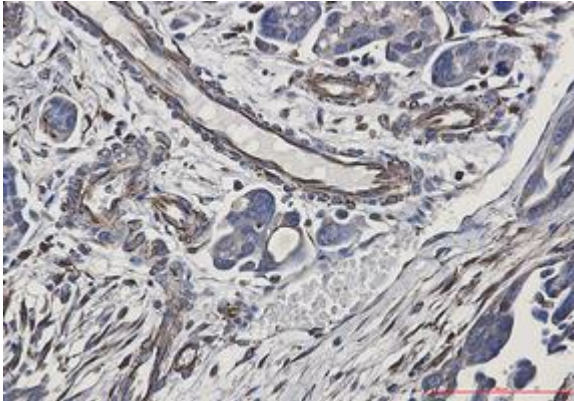
纯化: Affinity Purified

种属反应性: Human, Mouse and Rat,Hamster

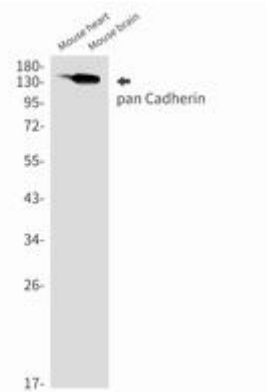
成分: PBS (without Mg<sup>2+</sup> and Ca<sup>2+</sup>), pH 7.3 containing 50% glycerol, 0.5% BSA and 0.02% sodium azide

研究领域: Signal Transduction

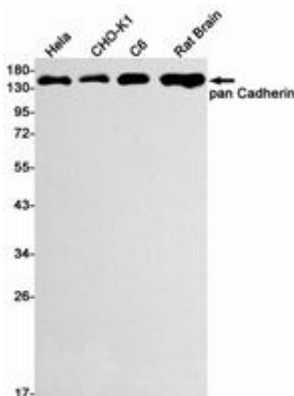
储存和运输: Store at -20°C. Avoid repeated freezing and thawing



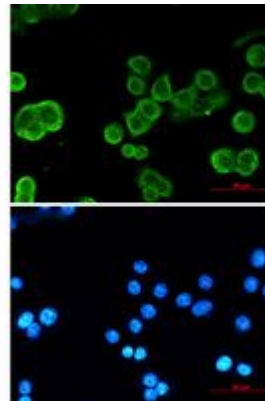
Immunohistochemistry analysis of paraffin-embedded Human Cholangiocarcinoma using pan Cadherin antibody. High-pressure and temperature Sodium Citrate pH 6.0 was used for antigen retrieval.



Western blot analysis of pan Cadherin in mouse heart, mouse brain lysates using Cadherin antibody.



Western blot analysis of pan Cadherin in Hela, CHO-K1, C6, rat Brain lysates using pan Cadherin antibody.



Immunocytochemistry analysis of pan Cadherin (green) in MCF-7 using pan Cadherin antibody, and DAPI (blue).