

CABP5 RABBIT PAB

货号: S218419

产品全名: CABP5 兔多抗

基因符号: CABP3

UNIPROT ID: Q9NP86 (Gene Accession - BC126133)

背景: The product of this gene belongs to a subfamily of calcium binding proteins, which share similarity to calmodulin. Calcium binding proteins are an important component of calcium mediated cellular signal transduction. Expression of this gene is retina-specific. The mouse homolog of this protein has been shown to express in the inner nuclear layer of the retina, suggested its role in neuronal functioning. The specific function of this gene is unknown.

抗原: Full length fusion 蛋白

经过测试的应用: ELISA, IHC

推荐稀释比: IHC: 50-300; ELISA: 5000-10000

种属反应性: Rabbit

克隆性: Rabbit Polyclonal

亚型: Immunogen-specific rabbit IgG

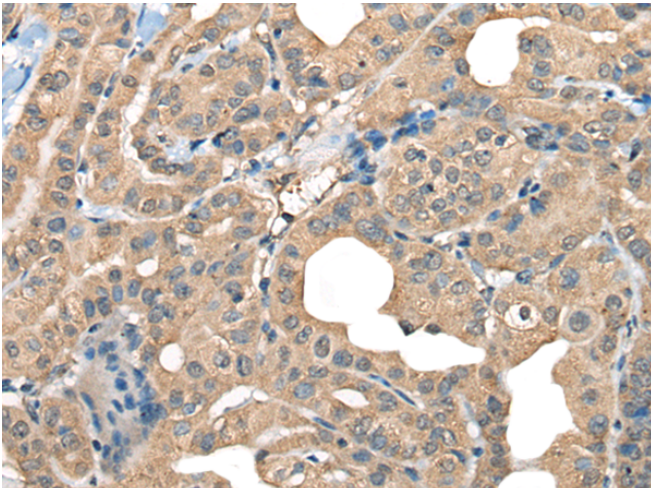
纯化: Antigen affinity purification

种属反应性: Human, Mouse

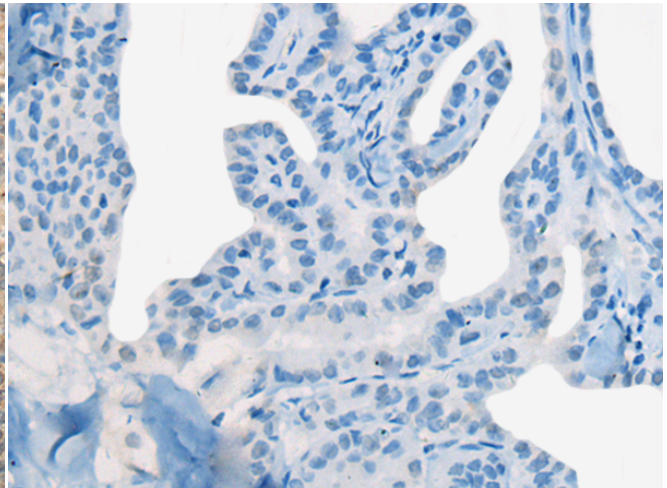
成分: PBS (without Mg²⁺ and Ca²⁺), pH 7.4, 150 mM NaCl, 0.05% Sodium Azide and 40% glycerol

研究领域: Signal Transduction, Neuroscience

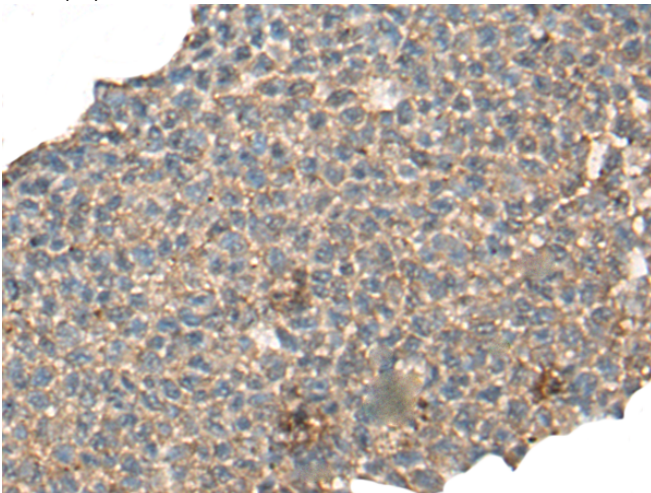
储存和运输: Store at -20°C. Avoid repeated freezing and thawing



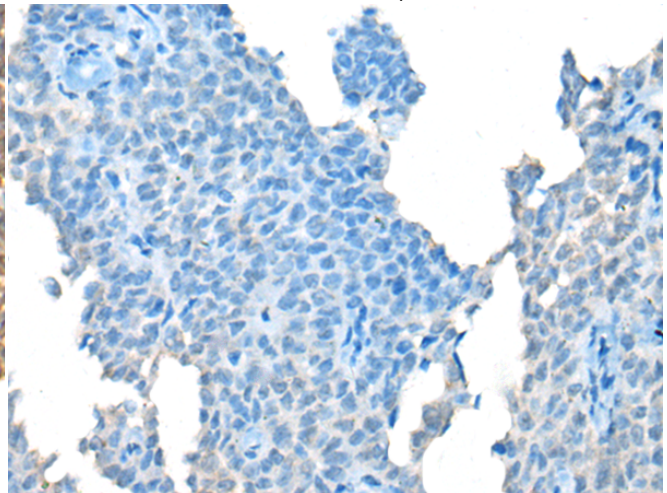
Immunohistochemistry analysis of paraffin embedded Human thyroid cancer tissue using 218419(CABP5 Antibody) at a dilution of 1/65(Cytoplasm).



In comparison with the IHC on the left, the same paraffin-embedded Human thyroid cancer tissue is first treated with the fusion protein and then with 218419(Anti-CABP5 Antibody) at dilution 1/65.



The image on the left is immunohistochemistry of paraffin-embedded Human ovarian cancer tissue using 218419(Anti-CABP5 Antibody) at a dilution of 1/65.



In comparison with the IHC on the left, the same paraffin-embedded Human ovarian cancer tissue is first treated with fusion protein and then with D224373(Anti-CABP5 Antibody) at dilution 1/65.



Product Description

Pioneering GTPase and Oncogene Product Development since 2010
