

CABLES2 RABBIT PAB

货号: S220413

产品全名: CABLES2 兔多抗

基因符号 ik3-2; C20orf150; dJ908M14.2

UNIPROT ID: Q9BTV7 (Gene Accession - NP_112492)

背景: Cables2 (Cdk5 and ABL1 enzyme substrate 2), also known as Ik3-2, is a 478 amino acid ubiquitously expressed protein that has a C-terminal cyclin box-containing domain, making it a member of the cyclin protein superfamily. A related protein, Cables, forms a trimolecular complex with Cdk5 and c-Abl in vivo, enhances apoptosis induced by overexpression of p53 and may be a tumor suppressor, due to its chromosomal loss of heterozygosity that is found in certain cancers. Cables2 shares 78% sequence similarity with Cables in the region of the cyclin box-containing domain and, in similar functionality, associates with Cdk3, Cdk5 and c-Abl. However, unlike its close relative, Cables2 also contains an N-terminal region that enhances not only p53-mediated cell death, but also p53-independent cell death. This characteristic suggests that the gene encoding Cables2 may also function as a tumor suppressor gene.

抗原: Synthetic peptide of human CABLES2

经过测试的应用: ELISA, IHC

推荐稀释比: IHC: 25-100; ELISA: 1000-2000

种属反应性: Rabbit

克隆性: Rabbit Polyclonal

亚型: Immunogen-specific rabbit IgG

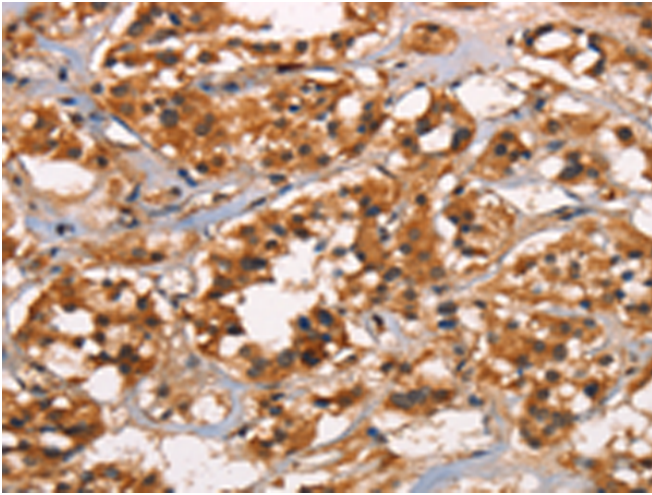
纯化: Antigen affinity purification

种属反应性: Human, Mouse

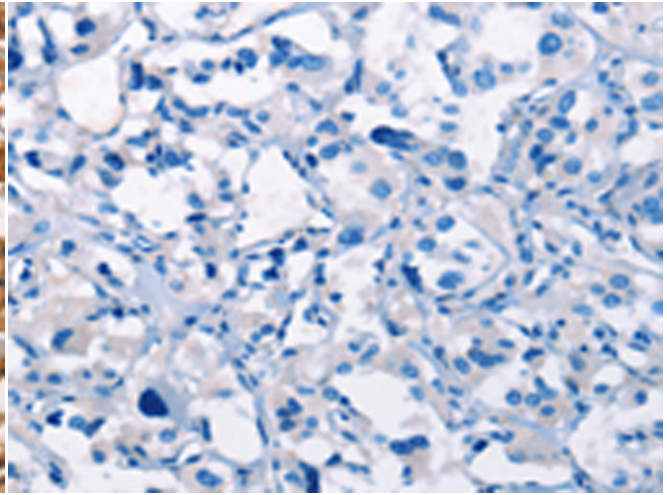
成分: PBS (without Mg²⁺ and Ca²⁺), pH 7.4, 150 mM NaCl, 0.05% Sodium Azide and 40% glycerol

研究领域: Cancer

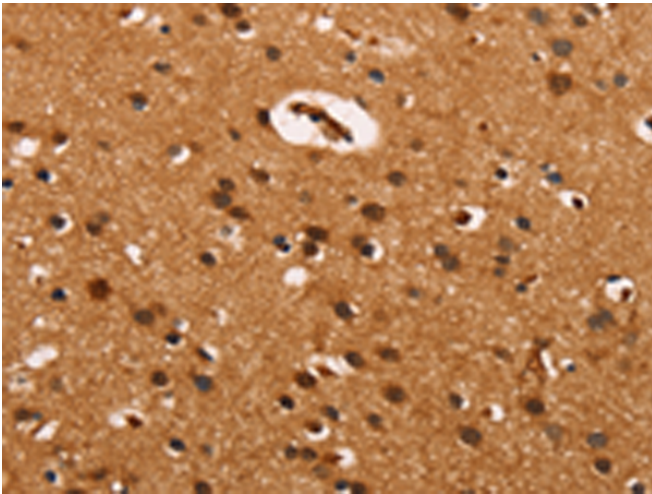
储存和运输: Store at -20°C. Avoid repeated freezing and thawing



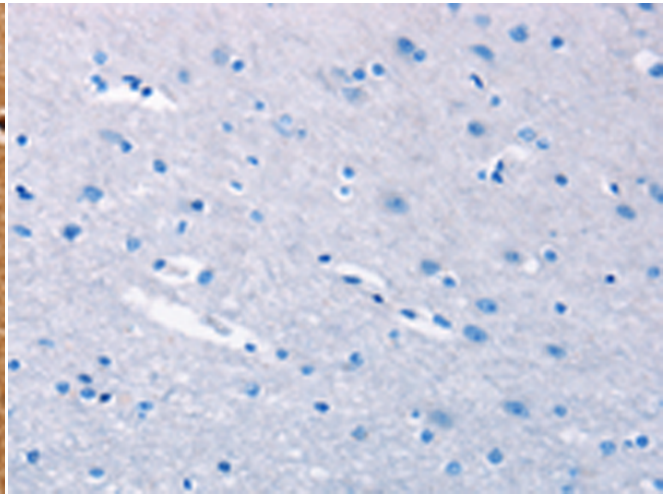
Immunohistochemistry analysis of paraffin embedded Human thyroid cancer tissue using 220413(CABLES2 Antibody) at a dilution of 1/25(Cytoplasm).



In comparison with the IHC on the left, the same paraffin-embedded Human thyroid cancer tissue is first treated with the synthetic peptide and then with 220413(Anti-CABLES2 Antibody) at dilution 1/25.



The image on the left is immunohistochemistry of paraffin-embedded Human brain tissue using 220413(Anti-CABLES2 Antibody) at a dilution of 1/25.



In comparison with the IHC on the left, the same paraffin-embedded Human brain tissue is first treated with synthetic peptide and then with D261496(Anti-CABLES2 Antibody) at dilution 1/25.