

## CAB39 RABBIT MAB

货号: N263244

产品全名: CAB39 兔单克隆抗体

基因符号 MO25; CGI-66

**UNIPROT ID:** Q9Y376

背景: Component of a complex that binds and activates STK11/LKB1.

抗原: A synthetic peptide of human CAB39/MO25

经过测试的应用: WB,IHC-P,IP

推荐稀释比: WB: 1/500-1/1000 IHC: 1/50-1/100 IP: 1/20

种属反应性: Rabbit

克隆性: Rabbit Monoclonal

克隆编号: R03-4G7

分子量: Calculated MW: 40 kDa; Observed MW: 40 kDa

亚型: IgG

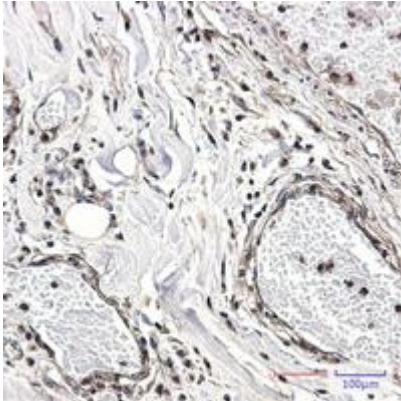
纯化: Affinity Purified

种属反应性: Human, Mouse and Rat

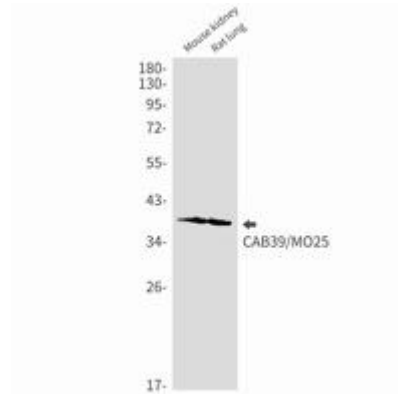
成分: PBS (without Mg<sup>2+</sup> and Ca<sup>2+</sup>), pH 7.3 containing 50% glycerol, 0.5% BSA and 0.02% sodium azide

研究领域: Signal Transduction

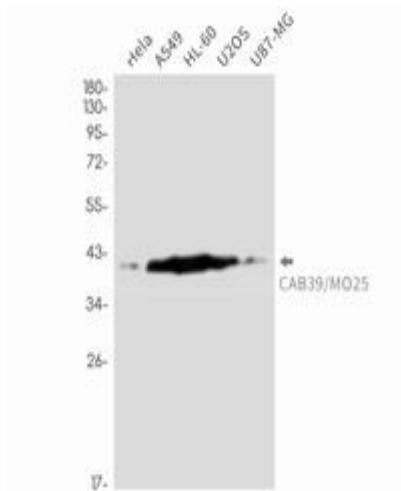
储存和运输: Store at -20°C. Avoid repeated freezing and thawing



Immunohistochemistry analysis of paraffin-embedded Human Cholangiocarcinoma using CAB39/MO25 antibody. High-pressure and temperature Sodium Citrate pH 6.0 was used for antigen retrieval.



Western blot analysis of CAB39/MO25 in mouse kidney, rat lung lysates using CAB39 antibody.



Western blot analysis of CAB39/MO25 in HeLa, A549, HL-60, U2OS, U87-MG lysates using CAB39/MO25 antibody.