

## CA4 RABBIT PAB

货号: S216393

产品全名: CA4 兔多抗

基因符号: CAIV; Car4; RPI7

**UNIPROT ID:** P22748 (Gene Accession - BC057792)

**背景:** Carbonic anhydrases (CAs) are a large family of zinc metalloenzymes that catalyze the reversible hydration of carbon dioxide. They participate in a variety of biological processes, including respiration, calcification, acid-base balance, bone resorption, and the formation of aqueous humor, cerebrospinal fluid, saliva, and gastric acid. They show extensive diversity in tissue distribution and in their subcellular localization. This gene encodes a glycosylphosphatidylinositol-anchored membrane isozyme expressed on the luminal surfaces of pulmonary (and certain other) capillaries and proximal renal tubules. Its exact function is not known; however, it may have a role in inherited renal abnormalities of bicarbonate transport.

**抗原:** Fusion protein of human CA4

**经过测试的应用:** ELISA, WB, IHC

**推荐稀释比:** IHC: 25-100;WB: 500-2000;ELISA: 2000-5000

**种属反应性:** Rabbit

**克隆性:** Rabbit Polyclonal

**亚型:** Immunogen-specific rabbit IgG

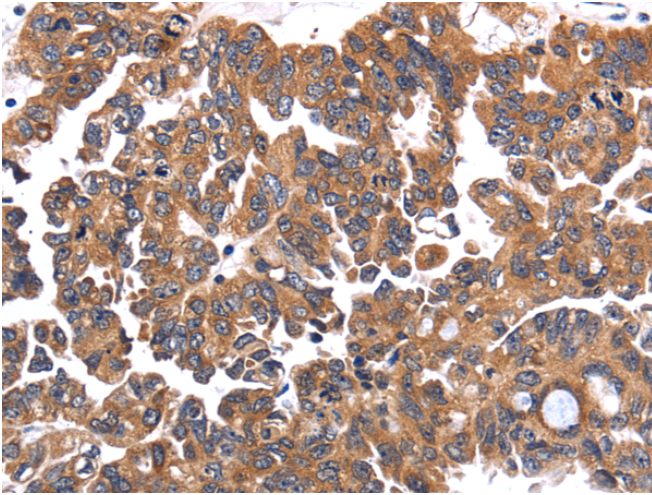
**纯化:** Antigen affinity purification

**种属反应性:** Human, Mouse

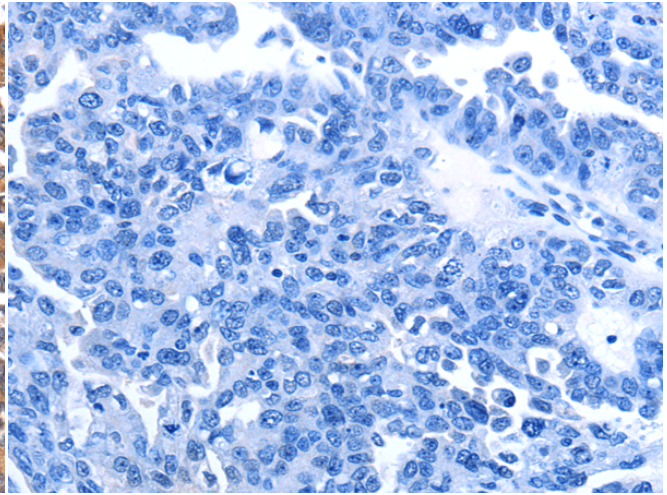
**成分:** PBS (without Mg<sup>2+</sup> and Ca<sup>2+</sup>), pH 7.4, 150 mM NaCl, 0.05% Sodium Azide and 40% glycerol

**研究领域:** Neuroscience

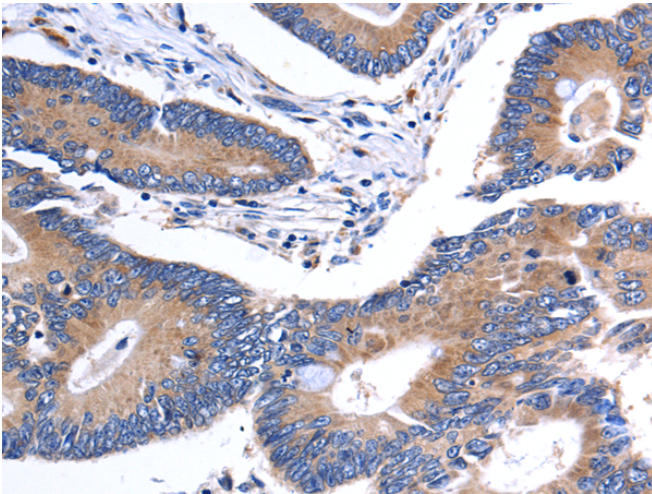
**储存和运输:** Store at -20°C. Avoid repeated freezing and thawing



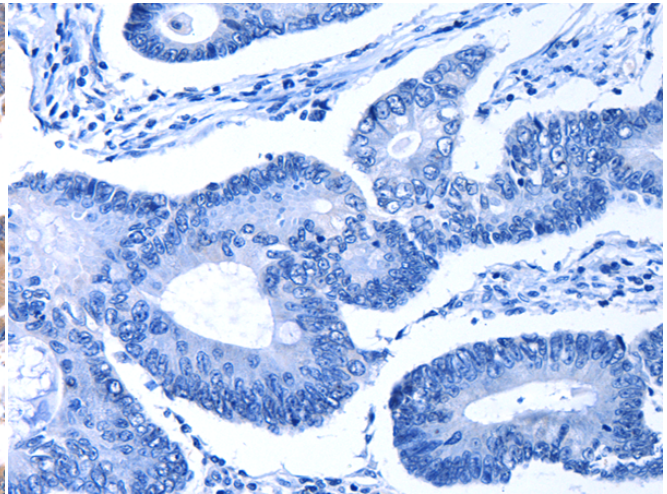
Immunohistochemistry analysis of paraffin embedded Human ovarian cancer tissue using 216393(CA4 Antibody) at a dilution of 1/30(cytoplasm).



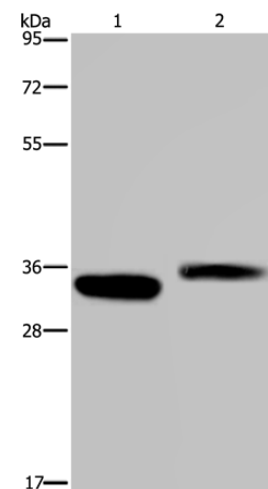
In comparison with the IHC on the left, the same paraffin-embedded Human ovarian cancer tissue is first treated with the fusion protein and then with 216393(Anti-CA4 Antibody) at dilution 1/30.



The image on the left is immunohistochemistry of paraffin-embedded Human colon cancer tissue using 216393(Anti-CA4 Antibody) at a dilution of 1/30.



In comparison with the IHC on the left, the same paraffin-embedded Human colon cancer tissue is first treated with fusion protein and then with D220349(Anti-CA4 Antibody) at dilution 1/30.



Gel: 8%SDS-PAGE, Lysate: 40 µg;  
Lane 1-2: Human normal lung and mouse lung tissue ;  
Primary antibody: 216393(CA4 Antibody) at dilution 1/300;  
Secondary antibody: Goat anti rabbit IgG at 1/8000 dilution;  
Exposure time: 40 seconds



# Product Description

Pioneering GTPase and Oncogene Product Development since 2010

---