

C9ORF167 RABBIT MAB

货号: N261945

产品全名: C9orf167 兔单克隆抗体

基因符号 C9orf167

UNIPROT ID: Q9NXH8

背景: Predicted to enable ATP binding activity. Predicted to be located in extracellular region and platelet alpha granule lumen. Predicted to be active in endoplasmic reticulum lumen and nuclear envelope.

抗原: Recombinant protein of human C9orf167

经过测试的应用: WB,IP

推荐稀释比: WB: 1/500-1/1000 IP: 1/20

种属反应性: Rabbit

克隆性: Rabbit Monoclonal

克隆编号: R03-5E4

分子量: Calculated MW: 47 kDa; Observed MW: 47 kDa

亚型: IgG

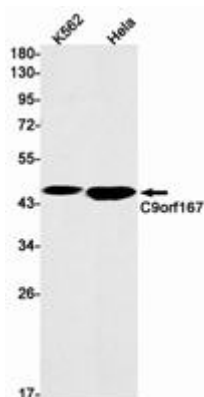
纯化: Affinity Purified

种属反应性: Human

成分: PBS (without Mg²⁺ and Ca²⁺), pH 7.3 containing 50% glycerol, 0.5% BSA and 0.02% sodium azide

研究领域: Cell Biology

储存和运输: Store at -20°C. Avoid repeated freezing and thawing



Western blot analysis of C9orf167 in K562, HeLa lysates using C9orf167 antibody.