

## C4A/B RABBIT PAB

货号: N225042

产品全名: C4A/B 兔多抗

基因符号 C4A; CO4; CPAMD2; Complement C4-A; Acidic complement C4; C3 and PZP-like alpha-2-macroglobulin domain-containing protein 2; C4B; CO4; CPAMD3; Complement C4-B; Basic complement C4; C3 and PZP-like alpha-2-macroglobulin domain-containing protein 3

**UNIPROT ID:** P0C0L4/P0C0L5

**背景:** Induces the contraction of smooth muscle, increases vascular permeability and causes histamine release from mast cells and basophilic leukocytes.

**抗原:** The antiserum was produced against synthesized peptide derived from the Internal region of human C4A/C4B. AA range:721-770

**经过测试的应用:** WB,IHC-P,ELISA

**推荐稀释比:** WB: 1/500-1/1000 IHC: 1/50-1/100 ELISA: 1/10000

**种属反应性:** Rabbit

**克隆性:** Rabbit Polyclonal

**分子量:** Calculated MW: 193 kDa; Observed MW: 180 kDa

**亚型:** IgG

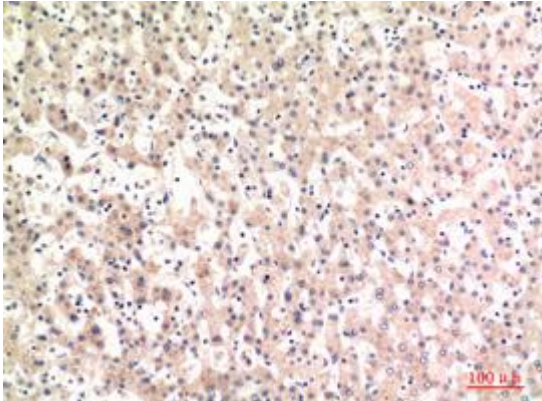
**纯化:** Affinity Purified

**种属反应性:** Human

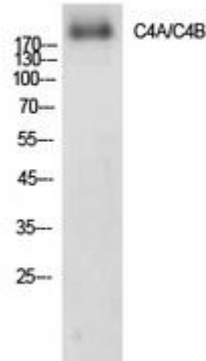
**成分:** PBS (without Mg<sup>2+</sup> and Ca<sup>2+</sup>), pH 7.3 containing 50% glycerol, 0.5% BSA and 0.02% sodium azide

**研究领域:** Immunology

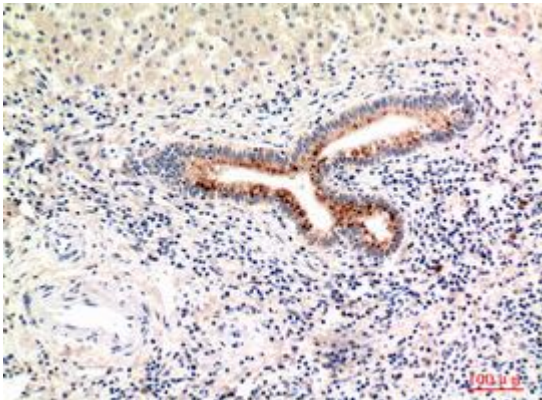
**储存和运输:** Store at -20°C. Avoid repeated freezing and thawing



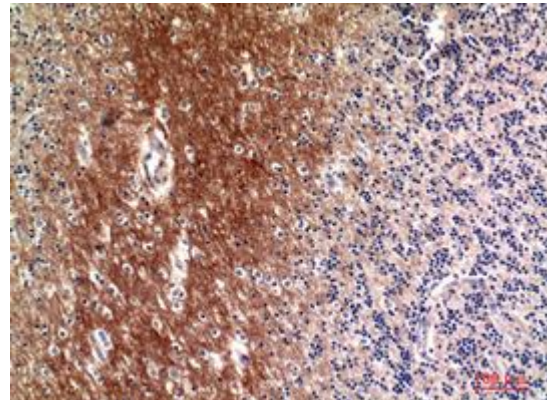
Immunohistochemistry analysis of paraffin-embedded Human liver using C4A/B antibody. High-pressure and temperature Sodium Citrate pH 6.0 was used for antigen retrieval.



Western blot analysis of C4A/B in AD293 lysates using C4A/B antibody.



Immunohistochemistry analysis of paraffin-embedded Human liver using C4A/B antibody. High-pressure and temperature Sodium Citrate pH 6.0 was used for antigen retrieval.



Immunohistochemistry analysis of paraffin-embedded Human brain using C4A/B antibody. High-pressure and temperature Sodium Citrate pH 6.0 was used for antigen retrieval.