

C3ORF38 RABBIT PAB

货号: S218413

产品全名: C3orf38 兔多抗

基因符号

UNIPROT ID: Q5JPI3 (Gene Accession - BC024188)

背景: May be involved in apoptosis regulation.

抗原: Fusion protein of human C3orf38

经过测试的应用: ELISA, IHC

推荐稀释比: IHC: 100-300; ELISA: 5000-10000

种属反应性: Rabbit

克隆性: Rabbit Polyclonal

亚型: Immunogen-specific rabbit IgG

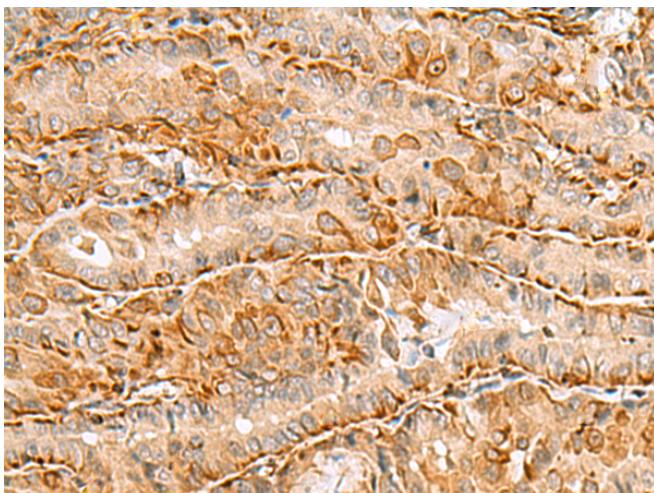
纯化: Antigen affinity purification

种属反应性: Human, Mouse, Rat

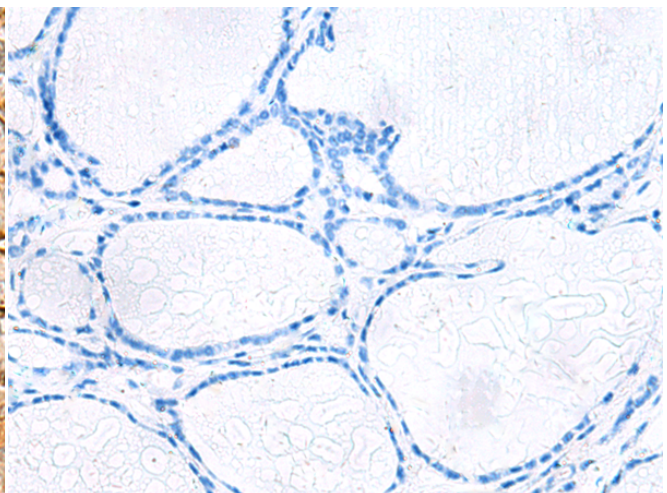
成分: PBS (without Mg²⁺ and Ca²⁺), pH 7.4, 150 mM NaCl, 0.05% Sodium Azide and 40% glycerol

研究领域: Cancer

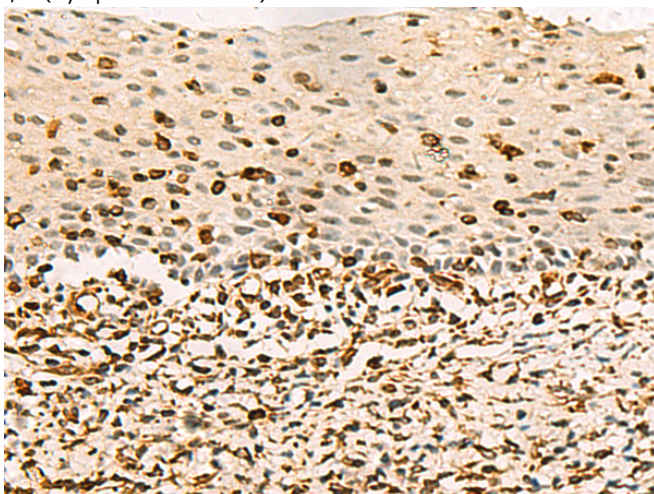
储存和运输: Store at -20°C. Avoid repeated freezing and thawing



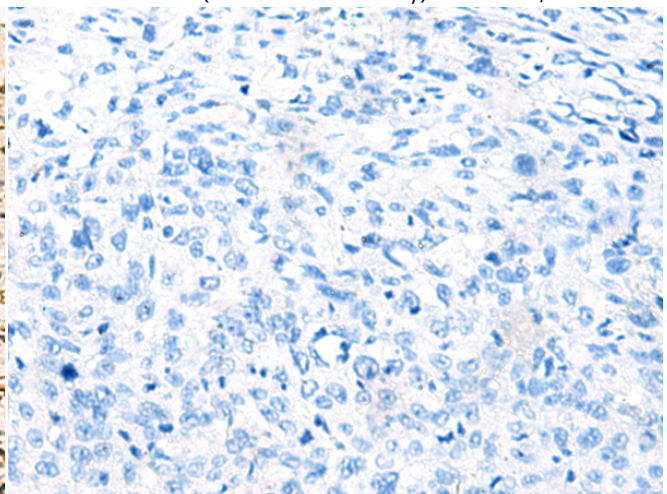
Immunohistochemistry analysis of paraffin embedded Human thyroid cancer tissue using 218413(C3orf38 Antibody) at a dilution of 1/80(Cytoplasm or Nucleus).



In comparison with the IHC on the left, the same paraffin-embedded Human thyroid cancer tissue is first treated with the fusion protein and then with 218413(Anti-C3orf38 Antibody) at dilution 1/80.



The image on the left is immunohistochemistry of paraffin-embedded Human cervical cancer tissue using 218413(Anti-C3orf38 Antibody) at a dilution of 1/80.



In comparison with the IHC on the left, the same paraffin-embedded Human cervical cancer tissue is first treated with fusion protein and then with D224361(Anti-C3orf38 Antibody) at dilution 1/80.



Product Description

Pioneering GTPase and Oncogene Product Development since 2010
