

## C3 RABBIT MAB

货号: N261941

产品全名: C3 兔单克隆抗体

基因符号 AHUS5; ARMD9; ASP; Complement C3; Complement factor 3; CPAMD1; HEL S 62p

**UNIPROT ID:** P01024

**背景:** Plays a central role in the activation of the complement system. Its processing by C3 convertase is the central reaction in both classical and alternative complement pathways. After activation C3b can bind covalently, via its reactive thioester, to cell surface carbohydrates or immune aggregates.

**抗原:** A synthetic peptide of human C3

**经过测试的应用:** WB, IHC-P

**推荐稀释比:** WB: 1/500-1/1000 IHC: 1/50-1/100

**种属反应性:** Rabbit

**克隆性:** Rabbit Monoclonal

**克隆编号:** R06-2C2

**分子量:** Calculated MW: 187 kDa; Observed MW: 187 kDa

**亚型:** IgG

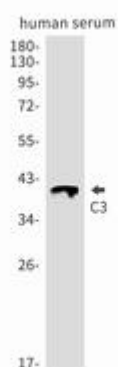
**纯化:** Affinity Purified

**种属反应性:** Human

**成分:** PBS (without Mg<sup>2+</sup> and Ca<sup>2+</sup>), pH 7.3 containing 50% glycerol, 0.5% BSA and 0.02% sodium azide

**研究领域:** Immunology

**储存和运输:** Store at -20°C. Avoid repeated freezing and thawing



Western blot analysis of C3 in Human serum lysates using C3 antibody.



# Product Description

Pioneering GTPase and Oncogene Product Development since 2010

---