

## C2CD2 RABBIT PAB

货号: S218411

产品全名: C2CD2 兔多抗

基因符号: TMEM24L; C21orf25; C21orf258

**UNIPROT ID:** Q9Y426 (Gene Accession - BC062323)

背景: C2CD2 is an 696 amino acid protien that is secreted. The C2CD2 gene product has been provisionally designated C2CD2 pending further characterization.

抗原: Fusion protein of human C2CD2

经过测试的应用: ELISA, WB, IHC

推荐稀释比: IHC: 30-150;WB: 200-1000;ELISA: 5000-10000

种属反应性: Rabbit

克隆性: Rabbit Polyclonal

亚型: Immunogen-specific rabbit IgG

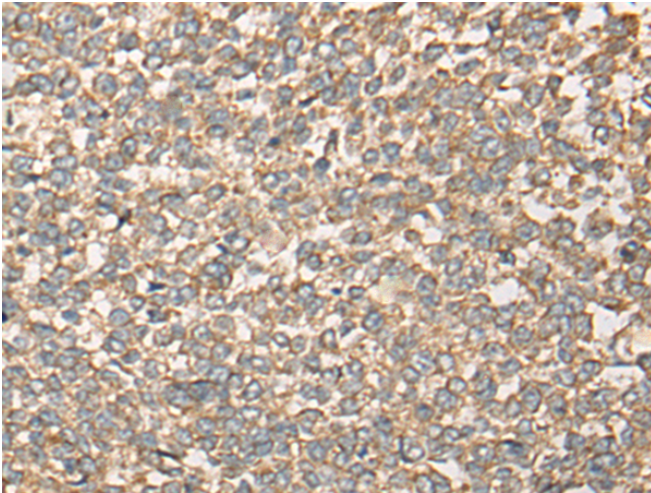
纯化: Antigen affinity purification

种属反应性: Human

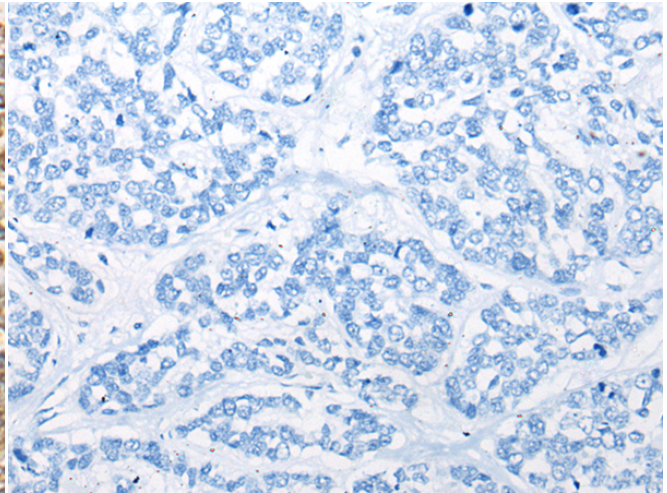
成分: PBS (without Mg<sup>2+</sup> and Ca<sup>2+</sup>), pH 7.4, 150 mM NaCl, 0.05% Sodium Azide and 40% glycerol

研究领域: Cell Biology

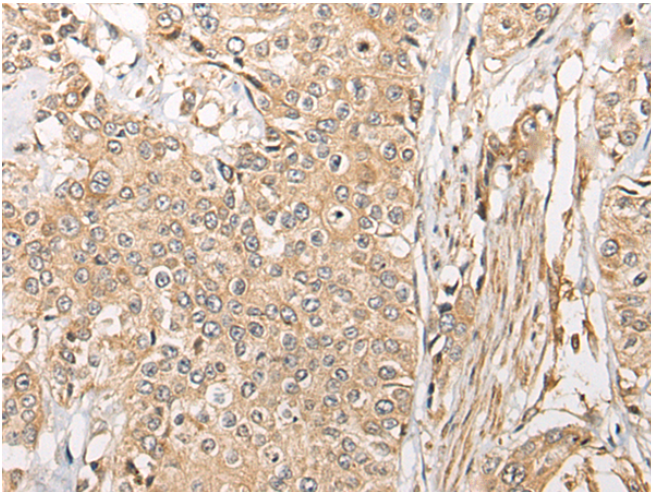
储存和运输: Store at -20°C. Avoid repeated freezing and thawing



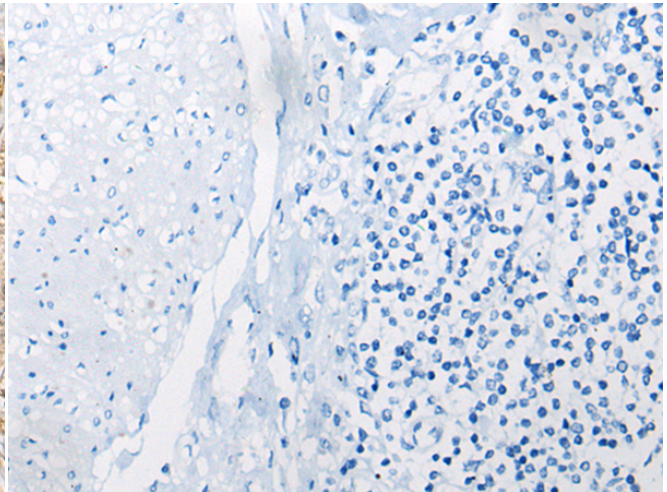
Immunohistochemistry analysis of paraffin embedded Human esophagus cancer tissue using 218411(C2CD2 Antibody) at a dilution of 1/40(Cytoplasm and Cell membrane).



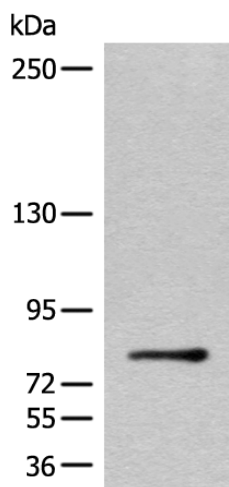
In comparison with the IHC on the left, the same paraffin-embedded Human esophagus cancer tissue is first treated with the fusion protein and then with 218411(Anti-C2CD2 Antibody) at dilution 1/40.



The image on the left is immunohistochemistry of paraffin-embedded Human prostate cancer tissue using 218411(Anti-C2CD2 Antibody) at a dilution of 1/40.



In comparison with the IHC on the left, the same paraffin-embedded Human prostate cancer tissue is first treated with fusion protein and then with D224358(Anti-C2CD2 Antibody) at dilution 1/40.



Gel: 6%SDS-PAGE, Lysate: 40 µg;  
Lane: Human placenta tissue lysate;  
Primary antibody: 218411(C2CD2 Antibody) at dilution 1/400;  
Secondary antibody: Goat anti rabbit IgG at 1/8000 dilution;  
Exposure time: 1 minute



# Product Description

Pioneering GTPase and Oncogene Product Development since 2010

---