

## C1RL RABBIT PAB

货号: N225238

产品全名: C1RL 兔多抗

基因符号 Complement C1r subcomponent-like protein (C1r-LP; C1r-like protein; EC 3.4.21.-; C1r-like serine protease analog protein; CLSPa)

**UNIPROT ID:** Q9NZP8

背景: Mediates the proteolytic cleavage of HP/haptoglobin in the endoplasmic reticulum.

抗原: Synthesized peptide derived from human C1RL. at AA range: 371-420

经过测试的应用: WB,ELISA

推荐稀释比: WB: 1/500-1/1000 ELISA: 1/10000

种属反应性: Rabbit

克隆性: Rabbit Polyclonal

分子量: Calculated MW: 53 kDa; Observed MW: 53 kDa

亚型: IgG

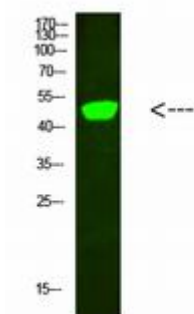
纯化: Affinity Purified

种属反应性: Human

成分: PBS (without Mg<sup>2+</sup> and Ca<sup>2+</sup>), pH 7.3 containing 50% glycerol, 0.5% BSA and 0.02% sodium azide

研究领域: Immunology

储存和运输: Store at -20°C. Avoid repeated freezing and thawing



Western blot analysis of C1RL in HeLa lysates using C1RL antibody.