

## C12ORF10 RABBIT PAB

货号: S218383

产品全名: C12orf10 兔多抗

基因符号: MYG; MYG1; Gamm1; MST024; MSTP024

**UNIPROT ID:** Q9HB07 (Gene Accession - BC028904)

**背景:** C12orf10, also known as MYG1, MYG1 is a 376 amino acid nucleo-mitochondrial protein belonging to the UPF0160 (MYG1) family. MYG1 is encoded by a gene that maps to human chromosome 12q13.13 and is ubiquitously expressed in simple as well as complex eukaryotes, with highest levels in testis. Considered to have a metal-dependent protein hydrolase (UPF0160) domain, MYG1 exhibits a mitochondrial targeting signal in the N-terminal region and a Pat7-type nuclear localization signal in the region between amino acids 33-39. Although MYG1 displays differential patterns and levels of expression during embryonic development, expression in normal adult tissues is stable, suggesting MYG1 involvement in early developmental processes and in adult stress/illness conditions. Elevation of MYG1 expression may be also associated with vitiligo susceptibility.

**抗原:** Fusion protein of human C12orf10

**经过测试的应用:** ELISA, WB, IHC

**推荐稀释比:** IHC: 25-100;WB: 200-1000;ELISA: 5000-10000

**种属反应性:** Rabbit

**克隆性:** Rabbit Polyclonal

**亚型:** Immunogen-specific rabbit IgG

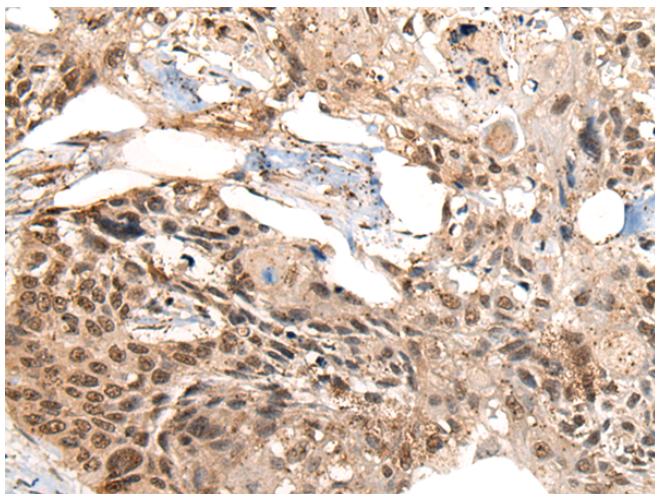
**纯化:** Antigen affinity purification

**种属反应性:** Human

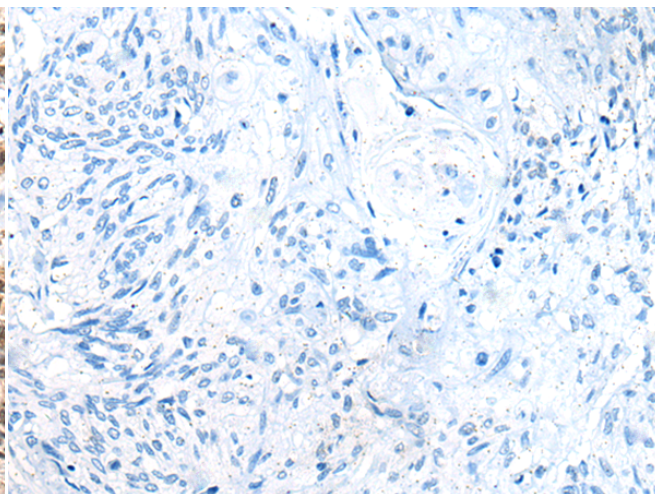
**成分:** PBS (without Mg<sup>2+</sup> and Ca<sup>2+</sup>), pH 7.4, 150 mM NaCl, 0.05% Sodium Azide and 40% glycerol

**研究领域:** Cell Biology

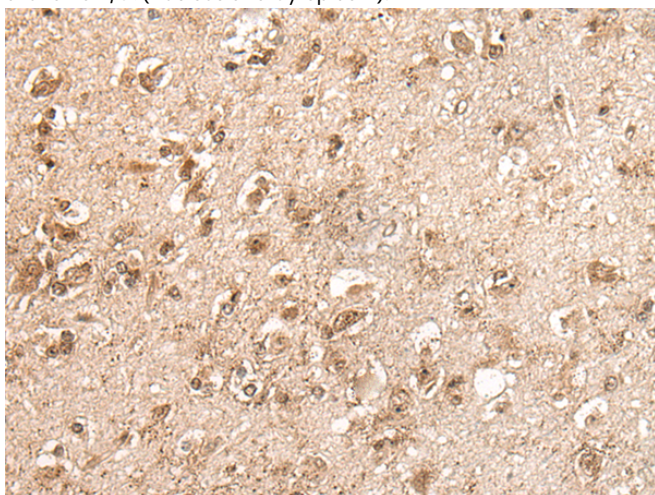
**储存和运输:** Store at -20°C. Avoid repeated freezing and thawing



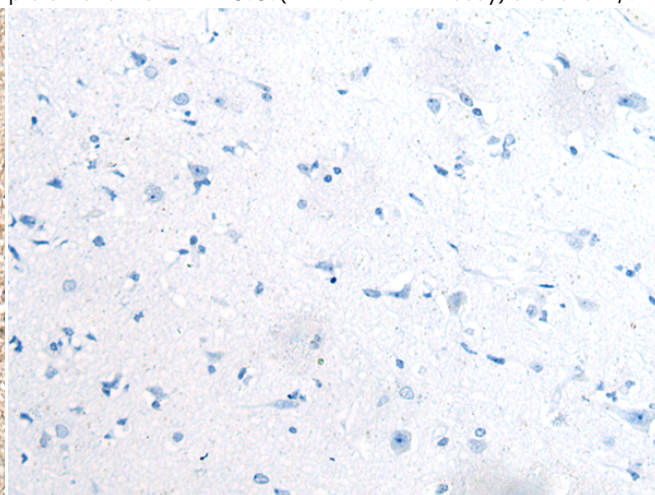
Immunohistochemistry analysis of paraffin embedded Human esophagus cancer tissue using 218383(C12orf10 Antibody) at a dilution of 1/35(Nucleus and Cytoplasm).



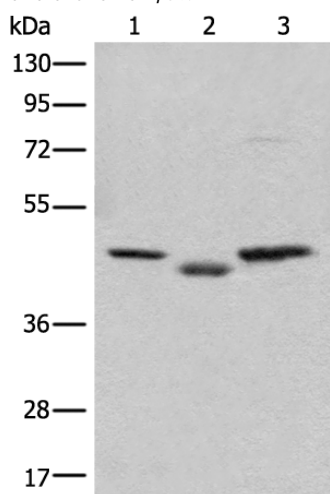
In comparison with the IHC on the left, the same paraffin-embedded Human esophagus cancer tissue is first treated with the fusion protein and then with 218383(Anti-C12orf10 Antibody) at dilution 1/35.



The image on the left is immunohistochemistry of paraffin-embedded Human brain tissue using 218383(Anti-C12orf10 Antibody) at a dilution of 1/35.



In comparison with the IHC on the left, the same paraffin-embedded Human brain tissue is first treated with fusion protein and then with D224304(Anti-C12orf10 Antibody) at dilution 1/35.



Gel: 8%SDS-PAGE, Lysate: 40 µg;  
Lane 1-3: PC-3, MCF-7 and 293T cell lysates;  
Primary antibody: 218383(C12orf10 Antibody) at dilution 1/350;  
Secondary antibody: Goat anti rabbit IgG at 1/8000 dilution;  
Exposure time: 5 seconds



# Product Description

Pioneering GTPase and Oncogene Product Development since 2010

---