

## C-MET RABBIT MAB

货号: N262510

产品全名: c-Met 兔单克隆抗体

基因符号 MET; Hepatocyte growth factor receptor; HGF receptor; HGF/SF receptor; Proto-oncogene c-Met; Scatter factor receptor; SF receptor; Tyrosine-protein kinase Met

**UNIPROT ID:** P08581

背景: The proto-oncogene MET product is the hepatocyte growth factor receptor and encodes tyrosine-kinase activity. The primary single chain precursor protein is post-translationally cleaved to produce the alpha and beta subunits, which are disulfide linked to form the mature receptor.

抗原: A synthetic peptide of human Met (c-Met)

经过测试的应用: WB,IHC-F,IHC-P,ICC/IF

推荐稀释比: WB: 1/500-1/1000 IHC: 1/50-1/100 IF: 1/50-1/200

种属反应性: Rabbit

克隆性: Rabbit Monoclonal

克隆编号: R02-4D6

分子量: Calculated MW: 156 kDa; Observed MW: 170 kDa

亚型: IgG

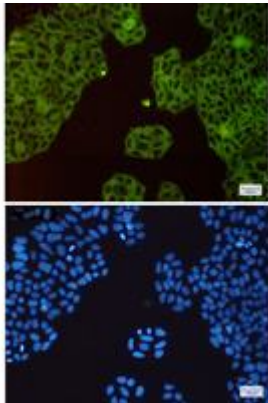
纯化: Affinity Purified

种属反应性: Human, Mouse and Rat

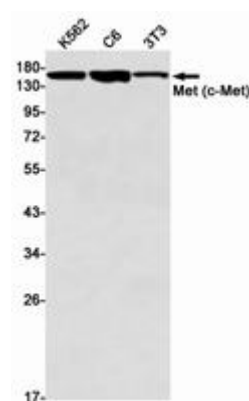
成分: PBS (without Mg<sup>2+</sup> and Ca<sup>2+</sup>), pH 7.3 containing 50% glycerol, 0.5% BSA and 0.02% sodium azide

研究领域: Signal Transduction

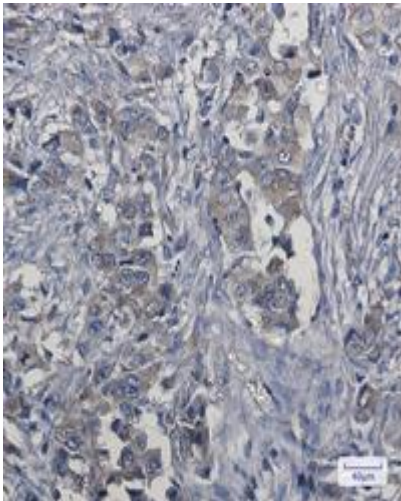
储存和运输: Store at -20°C. Avoid repeated freezing and thawing



Immunocytochemistry analysis of Met (c-Met)(green) in Hela using Met (c-Met) antibody, and DAPI(blue)



Western blot analysis of Met (c-Met) in K562, C6, 3T3 lysates using c-Met antibody.



Immunohistochemistry analysis of paraffin-embedded Human lung cancer using Met (c-Met) antibody. High-pressure and temperature Sodium Citrate pH 6.0 was used for antigen retrieval.