

## BTG3 RABBIT PAB

货号: S216377

产品全名: BTG3 兔多抗

基因符号 ANA; TOB5; TOFA; APRO4; TOB55; ANA/BTG3

UNIPROT ID: Q14201 (Gene Accession - BC011957)

背景: The protein encoded by this gene is a member of the BTG/Tob family. This family has structurally related proteins that appear to have antiproliferative properties. This encoded protein might play a role in neurogenesis in the central nervous system. Two transcript variants encoding different isoforms have been found for this gene.

抗原: Fusion protein of human BTG3

经过测试的应用: ELISA, WB, IHC

推荐稀释比: IHC: 100-200;WB: 1000-5000;ELISA: 5000-10000

种属反应性: Rabbit

克隆性: Rabbit Polyclonal

亚型: Immunogen-specific rabbit IgG

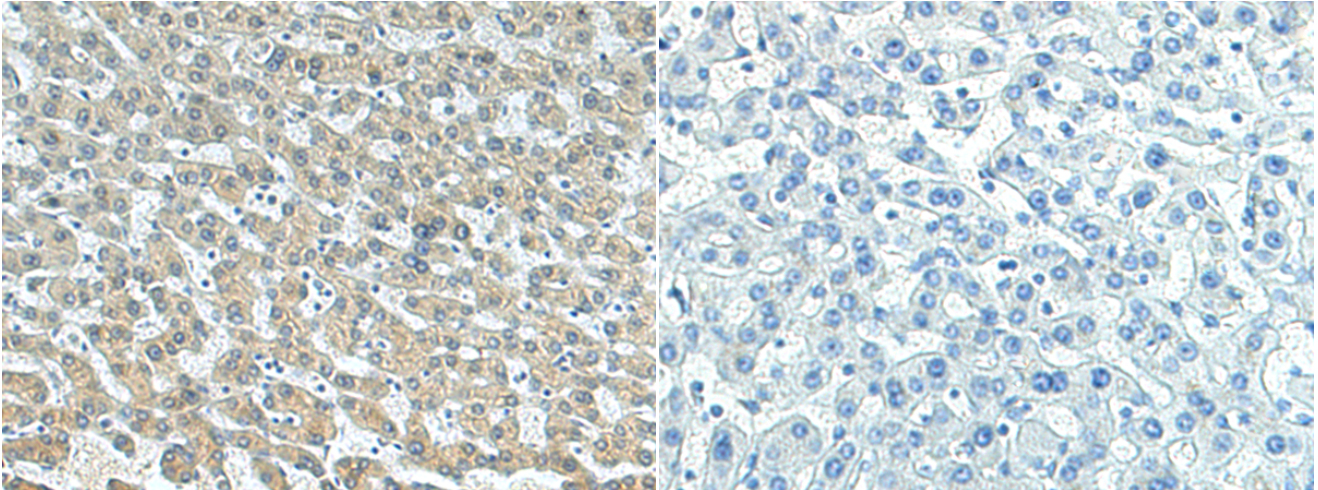
纯化: Antigen affinity purification

种属反应性: Human, Mouse

成分: PBS (without Mg<sup>2+</sup> and Ca<sup>2+</sup>), pH 7.4, 150 mM NaCl, 0.05% Sodium Azide and 40% glycerol

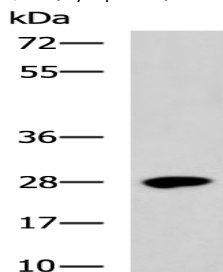
研究领域: Cancer

储存和运输: Store at -20°C. Avoid repeated freezing and thawing



Immunohistochemistry analysis of paraffin embedded Human liver cancer tissue using 216377(BTG3 Antibody) at a dilution of 1/140(Cytoplasm).

In comparison with the IHC on the left, the same paraffin-embedded Human liver cancer tissue is first treated with the fusion protein and then with 216377(Anti-BTG3 Antibody) at dilution 1/140.



Gel: 8%SDS-PAGE, Lysate: 40 µg;

Lane: Mouse testis tissue lysate;

Primary antibody: 216377(BTG3 Antibody) at dilution 1/1000;

Secondary antibody: HRP-conjugated Goat anti rabbit IgG at 1/5000 dilution;

Exposure time: 2 minutes