

## BTF3L4 RABBIT PAB

货号: S218377

产品全名: BTF3L4 兔多抗

基因符号

**UNIPROT ID:** Q96K17 (Gene Accession - BC022371)

背景: The function of this protein remains unknown.

抗原: Full length fusion 蛋白

经过测试的应用: ELISA, WB, IHC

推荐稀释比: IHC: 25-100;WB: 200-1000;ELISA: 5000-10000

种属反应性: Rabbit

克隆性: Rabbit Polyclonal

亚型: Immunogen-specific rabbit IgG

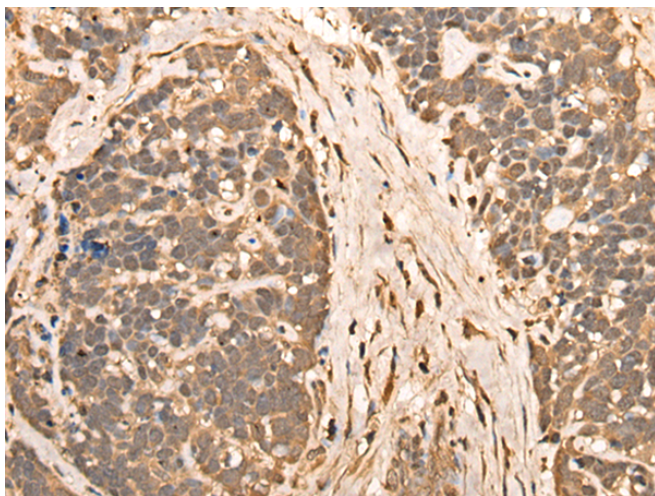
纯化: Antigen affinity purification

种属反应性: Human, Mouse

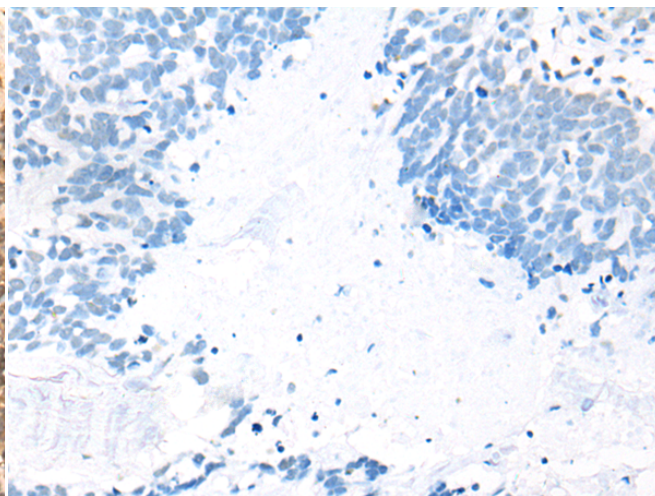
成分: PBS (without Mg<sup>2+</sup> and Ca<sup>2+</sup>), pH 7.4, 150 mM NaCl, 0.05% Sodium Azide and 40% glycerol

研究领域: Epigenetics and Nuclear Signaling

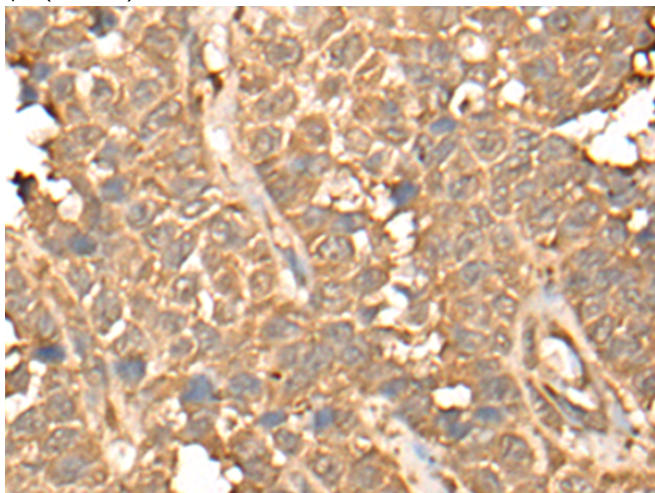
储存和运输: Store at -20°C. Avoid repeated freezing and thawing



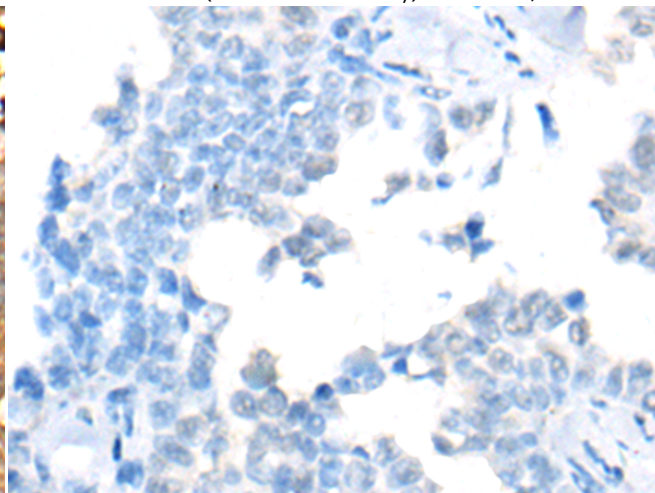
Immunohistochemistry analysis of paraffin embedded Human thyroid cancer tissue using 218377(BTF3L4 Antibody) at a dilution of 1/35(Nucleus).



In comparison with the IHC on the left, the same paraffin-embedded Human thyroid cancer tissue is first treated with the fusion protein and then with 218377(Anti-BTF3L4 Antibody) at dilution 1/35.

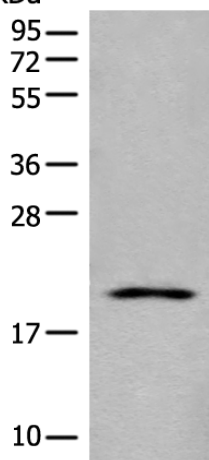


The image on the left is immunohistochemistry of paraffin-embedded Human ovarian cancer tissue using 218377(Anti-BTF3L4 Antibody) at a dilution of 1/35.



In comparison with the IHC on the left, the same paraffin-embedded Human ovarian cancer tissue is first treated with fusion protein and then with D224288(Anti-BTF3L4 Antibody) at dilution 1/35.

kDa



Gel: 12%SDS-PAGE, Lysate: 40 µg;  
 Lane: HeLa cell lysate;  
 Primary antibody: 218377(BTF3L4 Antibody) at dilution 1/350;  
 Secondary antibody: Goat anti rabbit IgG at 1/8000 dilution;  
 Exposure time: 1 minute



# Product Description

Pioneering GTPase and Oncogene Product Development since 2010

---