

BTBD6 RABBIT PAB

货号: S221626

产品全名: BTBD6 兔多抗

基因符号: BDPL

UNIPROT ID: Q96KE9 (Gene Accession - NP_150374)

背景: BTBD6 (BTB/POZ domain-containing protein 6), also known as BDPL or lens BTB domain protein, is a 410 amino acid protein that contains one BTB/POZ domain and is specifically expressed in the lens. The BTB/POZ domain mediates homomeric and heteromeric POZ-POZ interactions and is common to transcriptional regulators involved in chromatin modeling. In several BTB/POZ containing proteins, including BCL-6 and the promyelocytic leukemia zinc-finger (PLZF) oncoprotein, this domain interacts with the SMRT/N-CoR-mSin3A HDAC complex and is directly involved in repressing and silencing gene transcription. When this domain is deleted, as with the oncogenic PLZF-RAR chimera of promyelocytic leukemias, this transcriptional repression is attenuated. This suggests that BTBD6 may play a role in transcription regulation in the lens.

抗原: Synthetic peptide of human BTBD6

经过测试的应用: ELISA, WB, IHC

推荐稀释比: IHC: Oct-50;WB: 200-1000;ELISA: 5000-10000

种属反应性: Rabbit

克隆性: Rabbit Polyclonal

亚型: Immunogen-specific rabbit IgG

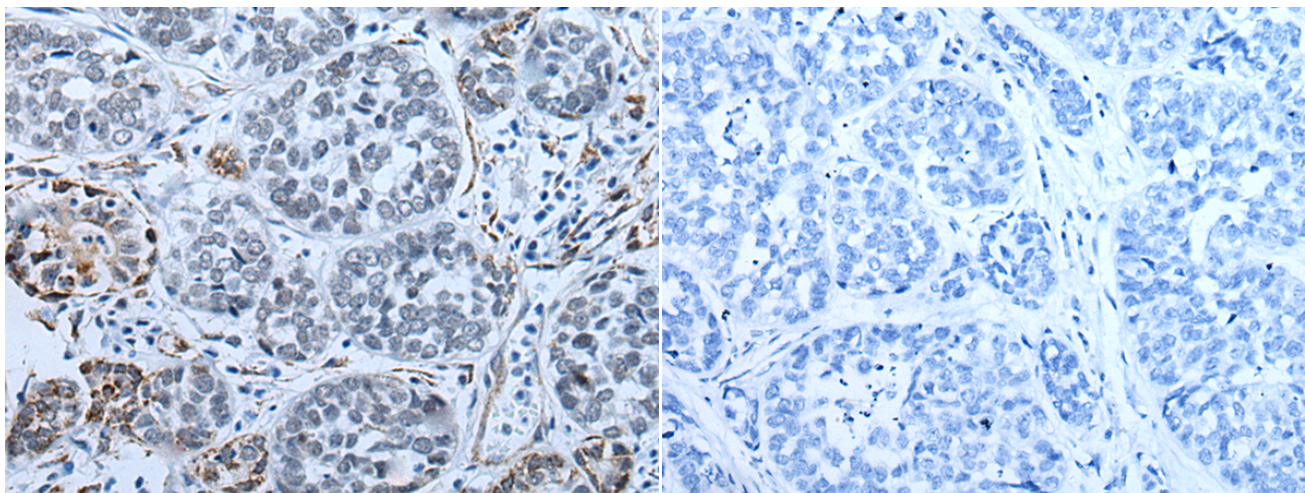
纯化: Antigen affinity purification

种属反应性: Human, Mouse

成分: PBS (without Mg²⁺ and Ca²⁺), pH 7.4, 150 mM NaCl, 0.05% Sodium Azide and 40% glycerol

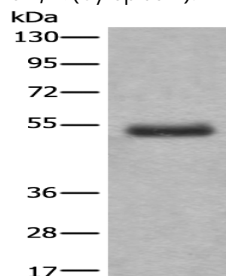
研究领域: Cell Biology

储存和运输: Store at -20°C. Avoid repeated freezing and thawing



Immunohistochemistry analysis of paraffin embedded Human esophagus cancer tissue using 221626 (BTBD6 Antibody) at a dilution of 1/25 (Cytoplasm).

In comparison with the IHC on the left, the same paraffin-embedded Human esophagus cancer tissue is first treated with the synthetic peptide and then with 221626 (Anti-BTBD6 Antibody) at dilution 1/25.



Gel: 6%SDS-PAGE, Lysate: 40 µg;

Lane: Human gastric carcinoma tissue lysate;

Primary antibody: 221626 (BTBD6 Antibody) at dilution 1/200;

Secondary antibody: Goat anti rabbit IgG at 1/8000 dilution;

Exposure time: 10 minutes



Product Description

Pioneering GTPase and Oncogene Product Development since 2010
