

BRMS1L RABBIT PAB

货号: S218055

产品全名: BRMS1L 兔多抗

基因符号 BRMS1

UNIPROT ID: Q5PSV4 (Gene Accession - BC006250)

背景: The protein encoded by this gene shows sequence similarity to the human breast carcinoma metastasis suppressor (BRMS1) protein and the mammalian Sds3 (suppressor of defective silencing 3) proteins. This protein is a component of the mSin3a family of histone deacetylase complexes (HDAC).

抗原: Fusion protein of human BRMS1L

经过测试的应用: ELISA, IHC

推荐稀释比: IHC: 30-150; ELISA: 5000-10000

种属反应性: Rabbit

克隆性: Rabbit Polyclonal

亚型: Immunogen-specific rabbit IgG

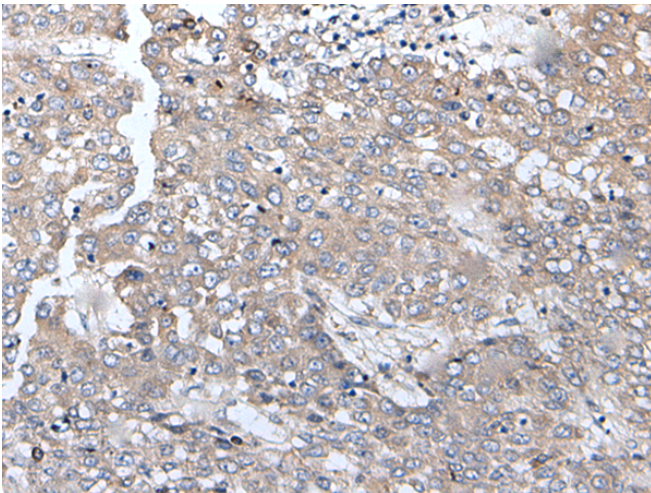
纯化: Antigen affinity purification

种属反应性: Human, Mouse

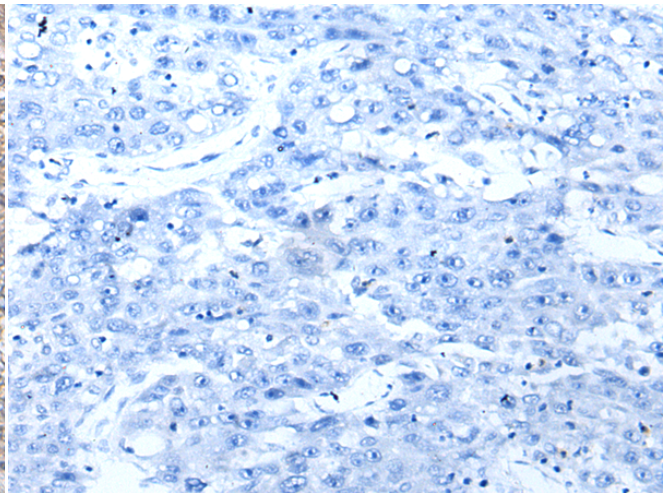
成分: PBS (without Mg²⁺ and Ca²⁺), pH 7.4, 150 mM NaCl, 0.05% Sodium Azide and 40% glycerol

研究领域: Epigenetics and Nuclear Signaling

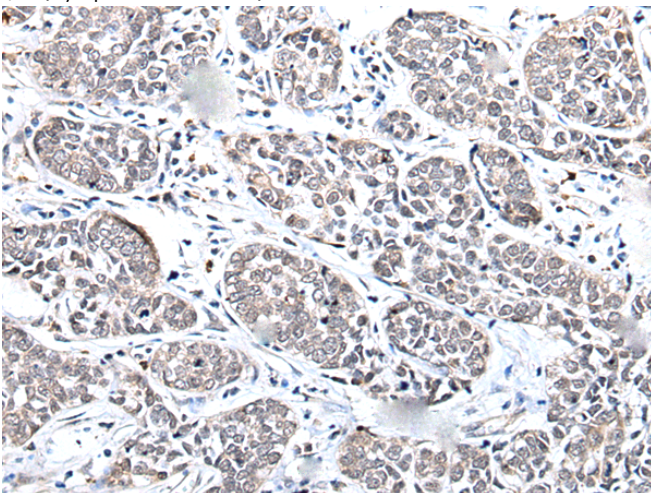
储存和运输: Store at -20°C. Avoid repeated freezing and thawing



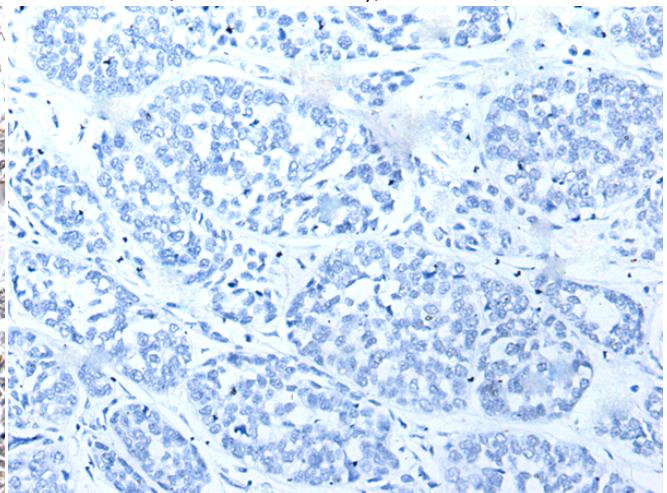
Immunohistochemistry analysis of paraffin embedded Human liver cancer tissue using 218055 (BRMS1L Antibody) at a dilution of 1/45 (Cytoplasm or Nucleus).



In comparison with the IHC on the left, the same paraffin-embedded Human liver cancer tissue is first treated with the fusion protein and then with 218055 (Anti-BRMS1L Antibody) at dilution 1/45.



The image on the left is immunohistochemistry of paraffin-embedded Human esophagus cancer tissue using 218055 (Anti-BRMS1L Antibody) at a dilution of 1/45.



In comparison with the IHC on the left, the same paraffin-embedded Human esophagus cancer tissue is first treated with fusion protein and then with D223624 (Anti-BRMS1L Antibody) at dilution 1/45.



Product Description

Pioneering GTPase and Oncogene Product Development since 2010
