

## BRM RABBIT PAB

货号: N225158

产品全名: BRM 兔多抗

基因符号 SMARCA2; BAF190B; BRM; SNF2A; SNF2L2; Probable global transcription activator SNF2L2; ATP-dependent helicase SMARCA2; BRG1-associated factor 190B; BAF190B; Protein brahma homolog; hBRM; SNF2-alpha; SWI/SNF-related matrix-associated actin-dependent regulator of chromatin subfamily A member 2

**UNIPROT ID:** P51531

背景: Involved in transcriptional activation and repression of select genes by chromatin remodeling (alteration of DNA-nucleosome topology).

抗原: The antiserum was produced against synthesized peptide derived from human Brm. AA range:1328-1377

经过测试的应用: WB,ELISA

推荐稀释比: WB: 1/500-1/1000 ELISA: 1/10000

种属反应性: Rabbit

克隆性: Rabbit Polyclonal

分子量: Calculated MW: 181 kDa; Observed MW: 181 kDa

亚型: IgG

纯化: Affinity Purified

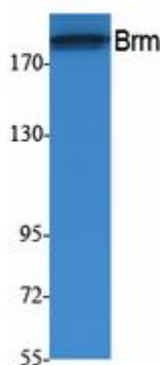
种属反应性: Human, Mouse and Rat

成分: PBS (without Mg<sup>2+</sup> and Ca<sup>2+</sup>), pH 7.3 containing 50% glycerol, 0.5% BSA and 0.02% sodium azide

研究领域: Epigenetics and Nuclear Signaling

储存和运输: Store at -20°C. Avoid repeated freezing and thawing

(kD)



Western blot analysis of BRM in A549 lysates using Brm antibody.



# Product Description

Pioneering GTPase and Oncogene Product Development since 2010

---