

BRG1 RABBIT MAB

货号: N261937

产品全名: BRG1 兔单克隆抗体

基因符号 Brg1; BAF190A; SWI/SNF; HPI-BP72; SNF2beta; b2b692Clo; b2b508.1Clo

UNIPROT ID: Q3TKT4

背景: Involved in transcriptional activation and repression of select genes by chromatin remodeling (alteration of DNA-nucleosome topology). Component of SWI/SNF chromatin remodeling complexes that carry out key enzymatic activities, changing chromatin structure by altering DNA-histone contacts within a nucleosome in an ATP-dependent manner.

抗原: A synthetic peptide of mouse BRG1

经过测试的应用: WB,IHC-F,IHC-P,ICC/IF,IP,ChIP

推荐稀释比: WB: 1/500-1/1000 IHC: 1/50-1/100 IF: 1/50-1/200 IP: 1/20 ChIP: 1/20

种属反应性: Rabbit

克隆性: Rabbit Monoclonal

克隆编号: R07-4B7

分子量: Calculated MW: 181 kDa; Observed MW: 220 kDa

亚型: IgG

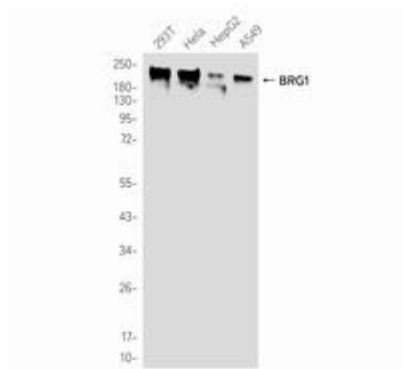
纯化: Affinity Purified

种属反应性: Human, Mouse and Rat

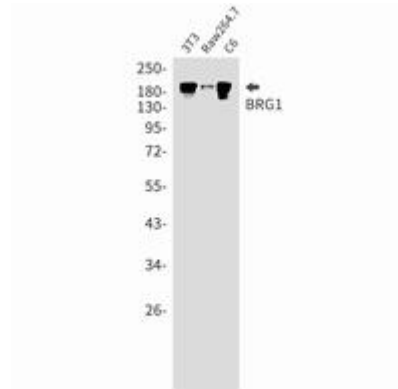
成分: PBS (without Mg²⁺ and Ca²⁺), pH 7.3 containing 50% glycerol, 0.5% BSA and 0.02% sodium azide

研究领域: Neuroscience&Neural progenitor cells

储存和运输: Store at -20°C. Avoid repeated freezing and thawing



Western blot analysis of BRG1 in 293T, Hela, HepG2, A549 lysates using BRG1 antibody.



Western blot analysis of BRG1 in 3T3, Raw264.7, C6 lysates using BRG1 antibody.