

BPIFB2 RABBIT PAB

货号: S219892

产品全名: BPIFB2 兔多抗

基因符号 RYSR, BPIL1, LPLUNC2, C20orf184, dJ726C3.2

UNIPROT ID: Q8N4F0 (Gene Accession - NP_079503)

背景: This gene encodes a member of the lipid transfer/lipopolysaccharide binding protein (LT/LBP) gene family. It is highly expressed in hypertrophic tonsils. This gene and three other members of the LT/LBP gene family form a cluster on the long arm of chromosome 20.

抗原: Synthetic peptide of human BPIFB2

经过测试的应用: ELISA, IHC

推荐稀释比: IHC: 50-200; ELISA: 1000-5000

种属反应性: Rabbit

克隆性: Rabbit Polyclonal

亚型: Immunogen-specific rabbit IgG

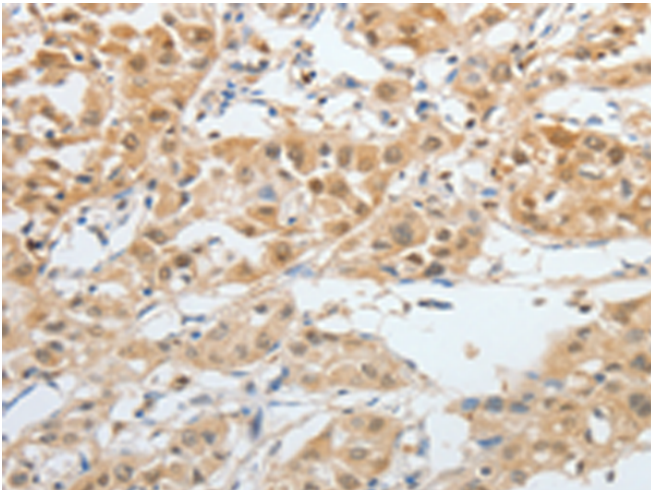
纯化: Antigen affinity purification

种属反应性: Human, Mouse

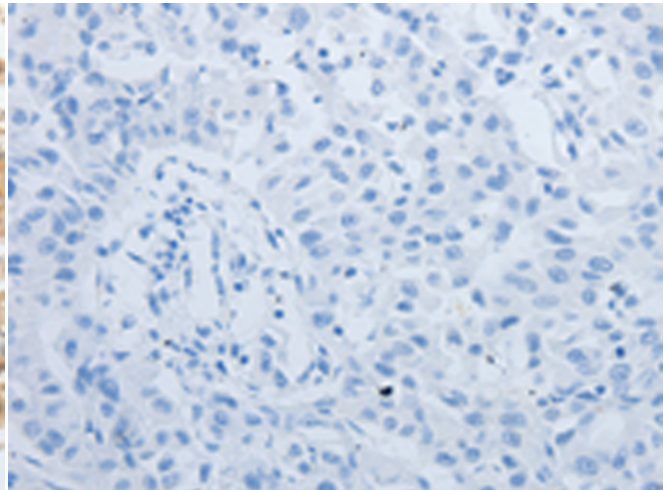
成分: PBS (without Mg²⁺ and Ca²⁺), pH 7.4, 150 mM NaCl, 0.05% Sodium Azide and 40% glycerol

研究领域: Cell Biology

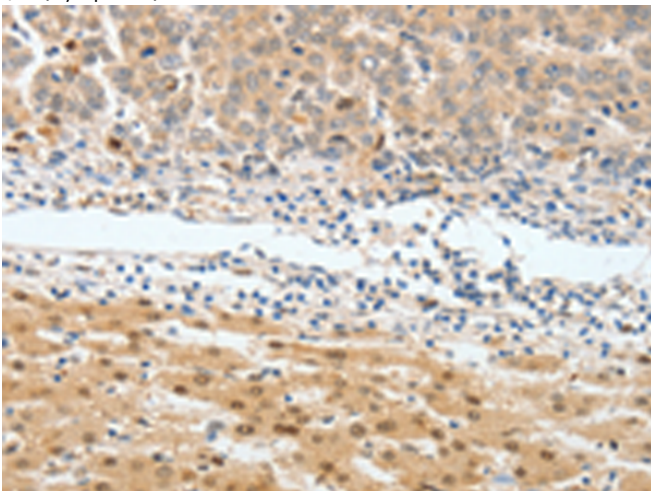
储存和运输: Store at -20°C. Avoid repeated freezing and thawing



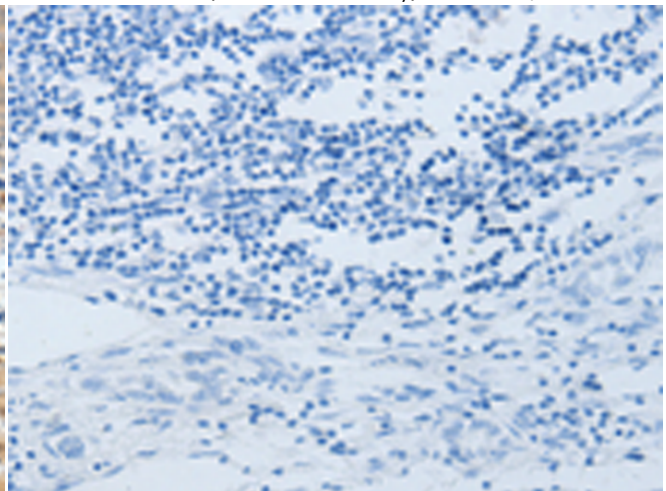
Immunohistochemistry analysis of paraffin embedded Human liver cancer tissue using 219892(BPIFB2 Antibody) at a dilution of 1/45(Cytoplasm).



In comparison with the IHC on the left, the same paraffin-embedded Human liver cancer tissue is first treated with the synthetic peptide and then with 219892(Anti-BPIFB2 Antibody) at dilution 1/45.



The image on the left is immunohistochemistry of paraffin-embedded Human lung cancer tissue using 219892(Anti-BPIFB2 Antibody) at a dilution of 1/45.



In comparison with the IHC on the left, the same paraffin-embedded Human lung cancer tissue is first treated with synthetic peptide and then with D260561(Anti-BPIFB2 Antibody) at dilution 1/45.



Product Description

Pioneering GTPase and Oncogene Product Development since 2010
