

BPIFB1 RABBIT PAB

货号: S213634

产品全名: BPIFB1 兔多抗

基因符号 LPLUNC1; C20orf114

UNIPROT ID: Q8TDL5 (Gene Accession - NP_149974)

背景: The protein encoded by this gene may be involved in the innate immune response to bacterial exposure in the mouth, nasal cavities, and lungs. The encoded protein is secreted and is a member of the BPI/LBP/PLUNC protein superfamily. This gene is found with other members of the superfamily in a cluster on chromosome 20. [provided by RefSeq, Jul 2008]

抗原: Synthetic peptide of human BPIFB1

经过测试的应用: ELISA, IHC

推荐稀释比: IHC: 50-200; ELISA: 5000-10000

种属反应性: Rabbit

克隆性: Rabbit Polyclonal

亚型: Immunogen-specific rabbit IgG

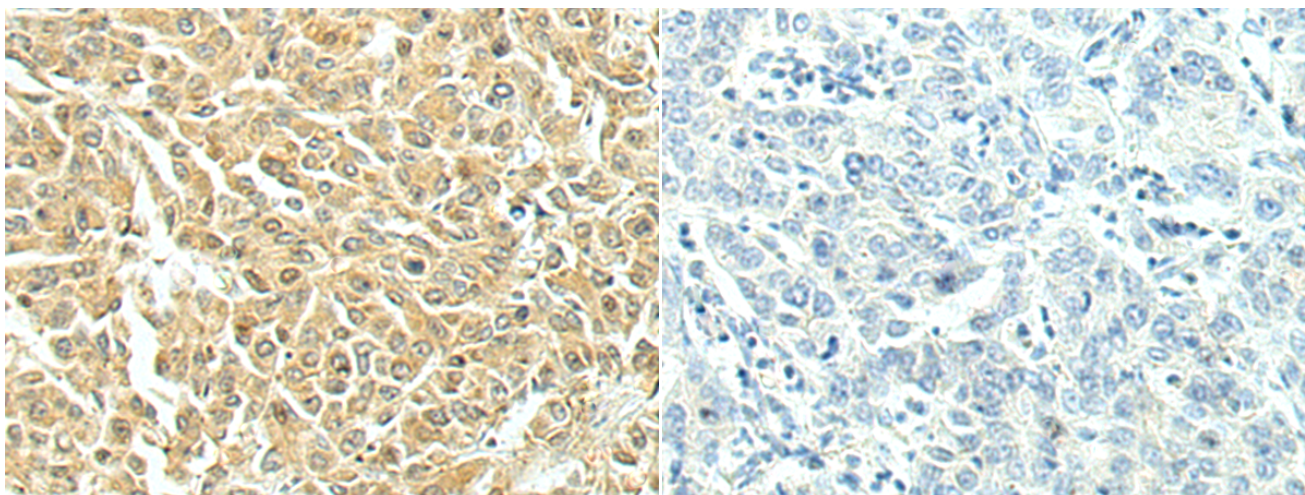
纯化: Antigen affinity purification

种属反应性: Human

成分: PBS (without Mg²⁺ and Ca²⁺), pH 7.4, 150 mM NaCl, 0.05% Sodium Azide and 40% glycerol

研究领域: Immunology

储存和运输: Store at -20°C. Avoid repeated freezing and thawing



Immunohistochemistry analysis of paraffin embedded Human liver cancer tissue using 213634(BPIFB1 Antibody) at a dilution of 1/75(Secreted).

In comparison with the IHC on the left, the same paraffin-embedded Human liver cancer tissue is first treated with the synthetic peptide and then with 213634(Anti-BPIFB1 Antibody) at dilution 1/75.