

BOVINE SERUM ALBUMIN RABBIT PAB

货号: N225517

产品全名: Bovine Serum Albumin 兔多抗

基因符号 BSA; ALB; Albumin; HSA; PRO0883; Serum Albumin

UNIPROT ID: P02769

背景: Serum albumin, the main protein of plasma, has a good binding capacity for water, Ca²⁺, Na⁺, K⁺, fatty acids, hormones, bilirubin and drugs. Its main function is the regulation of the colloidal osmotic pressure of blood. Major zinc transporter in plasma, typically binds about 80% of all plasma zinc.

抗原: Recombinant Protein of Bovine Serum Albumin

经过测试的应用: WB,ELISA

推荐稀释比: WB: 1/500-1/1000 ELISA: 1/10000

种属反应性: Rabbit

克隆性: Rabbit Polyclonal

分子量: Calculated MW: 69 kDa; Observed MW: 66 kDa

亚型: IgG

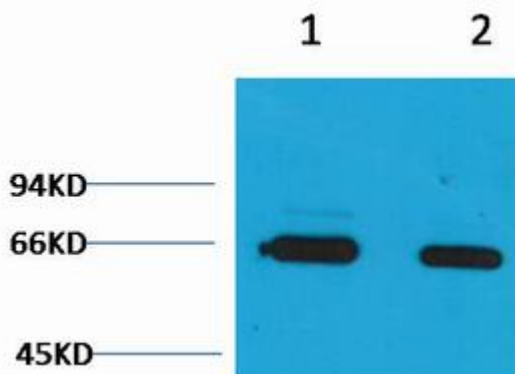
纯化: Affinity Purified

种属反应性: Bovine

成分: PBS (without Mg²⁺ and Ca²⁺), pH 7.3 containing 50% glycerol, 0.5% BSA and 0.02% sodium azide

研究领域: Cardiovascular

储存和运输: Store at -20°C. Avoid repeated freezing and thawing



Western blot analysis of Bovine Serum Albumin in Bovine Serum Albumin lysates using Bovine Serum Albumin antibody.



Product Description

Pioneering GTPase and Oncogene Product Development since 2010
