

## BORA RABBIT PAB

货号: S215380

产品全名: BORA 兔多抗

基因符号: C13orf34

**UNIPROT ID:** Q6PGQ7 (Gene Accession - NP\_079084)

**背景:** Aurora related kinase-1 (ARK-1) is a centrosome-associated serine/threonine kinase that regulates centrosome separation, bipolar spindle assembly and chromosome segregation during mitosis. Bora (protein aurora borealis) is a 559 amino acid protein that activates ARK-1. Bora is localized to the nucleus until mitosis is initiated, when it then translocates to the cytoplasm. This translocation is dependent on activated Cdc2, which releases Bora to bind and activate ARK-1 in the cytoplasm. Plk (polo-like kinase) interacts with Bora to control the accessibility of its activation loop for phosphorylation and activation on its N-terminus by ARK-1. It is through this mechanism that Bora and ARK-1 control cellular mitotic entry. Downregulation of the gene encoding Bora results in multipolar spindles in mitosis, a phenomenon that is also observed when ARK-1 function is blocked.

**抗原:** Synthetic peptide of human BORA

**经过测试的应用:** ELISA, WB, IHC

**推荐稀释比:** IHC: 50-300;WB: 500-2000;ELISA: 5000-10000

**种属反应性:** Rabbit

**克隆性:** Rabbit Polyclonal

**亚型:** Immunogen-specific rabbit IgG

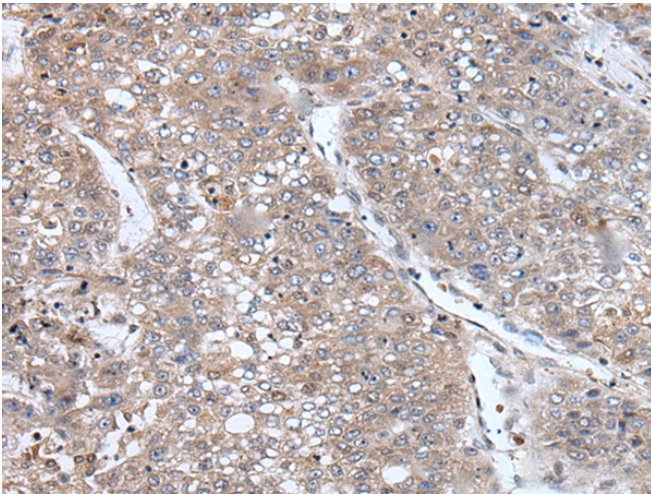
**纯化:** Antigen affinity purification

**种属反应性:** Human

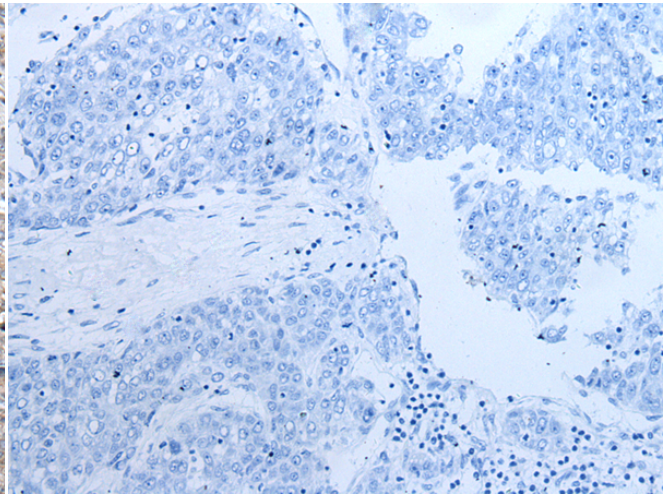
**成分:** PBS (without Mg<sup>2+</sup> and Ca<sup>2+</sup>), pH 7.4, 150 mM NaCl, 0.05% Sodium Azide and 40% glycerol

**研究领域:** Signal Transduction, Cancer

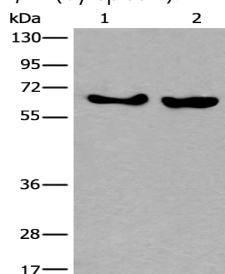
**储存和运输:** Store at -20°C. Avoid repeated freezing and thawing



Immunohistochemistry analysis of paraffin embedded Human liver cancer tissue using 215380 (BORA Antibody) at a dilution of 1/105 (Cytoplasm).



In comparison with the IHC on the left, the same paraffin-embedded Human liver cancer tissue is first treated with the synthetic peptide and then with 215380 (Anti-BORA Antibody) at dilution 1/105.



Gel: 8%SDS-PAGE, Lysate: 40 µg;  
Lane 1-2: K562 and HeLa cell lysates;  
Primary antibody: 215380 (BORA Antibody) at dilution 1/800;  
Secondary antibody: Goat anti rabbit IgG at 1/8000 dilution;  
Exposure time: 1 minute



# Product Description

Pioneering GTPase and Oncogene Product Development since 2010

---