

## BORA RABBIT MAB

货号: N261932

产品全名: Bora 兔单克隆抗体

基因符号 C13orf34

**UNIPROT ID:** Q6PGQ7

背景: Required for the activation of AURKA at the onset of mitosis.

抗原: Recombinant protein of human Bora

经过测试的应用: WB,IP

推荐稀释比: WB: 1/500-1/1000 IP: 1/20

种属反应性: Rabbit

克隆性: Rabbit Monoclonal

克隆编号: R06-5B4

分子量: Calculated MW: 61 kDa; Observed MW: 61 kDa

亚型: IgG

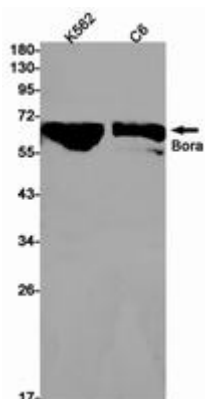
纯化: Affinity Purified

种属反应性: Human, Mouse and Rat

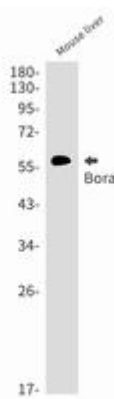
成分: PBS (without Mg<sup>2+</sup> and Ca<sup>2+</sup>), pH 7.3 containing 50% glycerol, 0.5% BSA and 0.02% sodium azide

研究领域: Cell Biology

储存和运输: Store at -20°C. Avoid repeated freezing and thawing



Western blot analysis of Bora in K562, C6 lysates using Bora antibody.



Western blot analysis of Bora in mouse liver lysates using Bora antibody.