

BOLL RABBIT PAB

货号: S210030

产品全名: BOLL 兔多抗

基因符号: BOULE

UNIPROT ID: Q8N9W6 (Gene Accession - BC033674)

背景: This gene belongs to the DAZ gene family required for germ cell development. It encodes an RNA-binding protein which is more similar to Drosophila Boule than to human proteins encoded by genes DAZ (deleted in azoospermia) or DAZL (deleted in azoospermia-like). Loss of this gene function results in the absence of sperm in semen (azoospermia). Histological studies demonstrated that the primary defect is at the meiotic G2/M transition. Two alternatively spliced transcript variants encoding distinct isoforms have been found for this gene.

抗原: Fusion protein of human BOLL

经过测试的应用: ELISA, IHC

推荐稀释比: IHC: 25-50; ELISA: 500-5000

种属反应性: Rabbit

克隆性: Rabbit Polyclonal

亚型: Immunogen-specific rabbit IgG

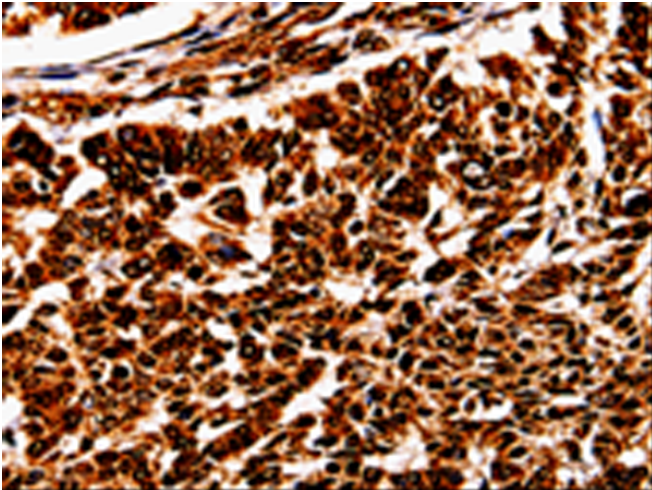
纯化: Antigen affinity purification

种属反应性: Human, Mouse

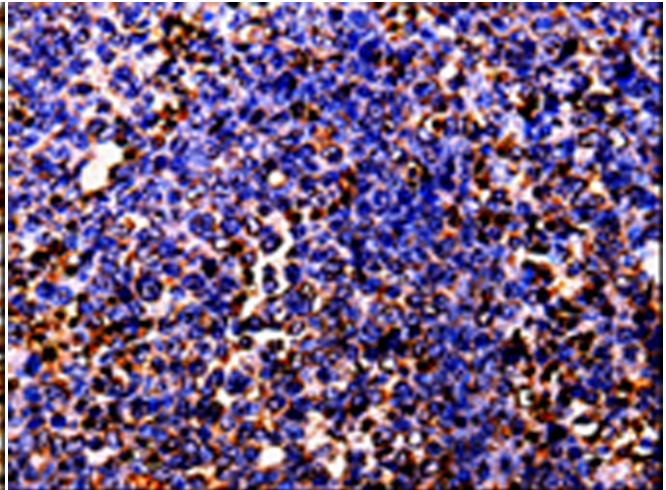
成分: PBS (without Mg²⁺ and Ca²⁺), pH 7.4, 150 mM NaCl, 0.05% Sodium Azide and 40% glycerol

研究领域: Epigenetics and Nuclear Signaling

储存和运输: Store at -20°C. Avoid repeated freezing and thawing



Immunohistochemistry analysis of paraffin-embedded Human lung cancer tissue using 210030(BOLL Antibody) at a dilution of 1/10(Cytoplasm, Nucleus).



Immunohistochemistry analysis of paraffin-embedded Human ovarian cancer tissue using 210030(Anti-BOLL Antibody) at a dilution of 1/10.