

BNIP3L RABBIT PAB

货号: S220382

产品全名: BNIP3L 兔多抗

基因符号: NIX; BNIP3a

UNIPROT ID: O60238 (Gene Accession - NP_004322)

背景: This gene is a member of the BCL2/adenovirus E1B 19 kd-interacting protein (BNIP) family. It interacts with the E1B 19 kDa protein, which protects cells from virally-induced cell death. The encoded protein also interacts with E1B 19 kDa-like sequences of BCL2, another apoptotic protector. This protein counteracts the apoptotic inducer BNIP3 and may play a role in tumor suppression.

抗原: Synthetic peptide of human BNIP3L

经过测试的应用: ELISA, IHC

推荐稀释比: IHC: 15-50; ELISA: 1000-2000

种属反应性: Rabbit

克隆性: Rabbit Polyclonal

亚型: Immunogen-specific rabbit IgG

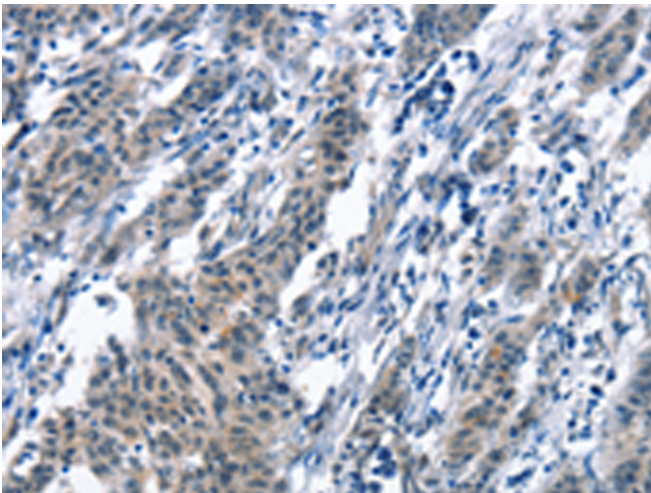
纯化: Antigen affinity purification

种属反应性: Human, Mouse

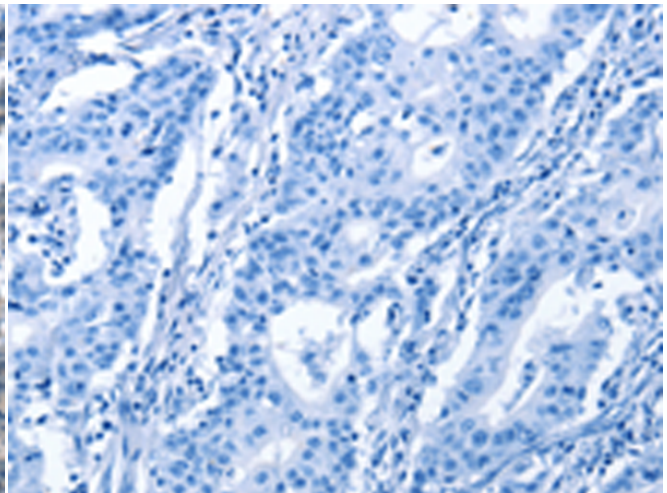
成分: PBS (without Mg²⁺ and Ca²⁺), pH 7.4, 150 mM NaCl, 0.05% Sodium Azide and 40% glycerol

研究领域: Cancer, Metabolism, Cardiovascular

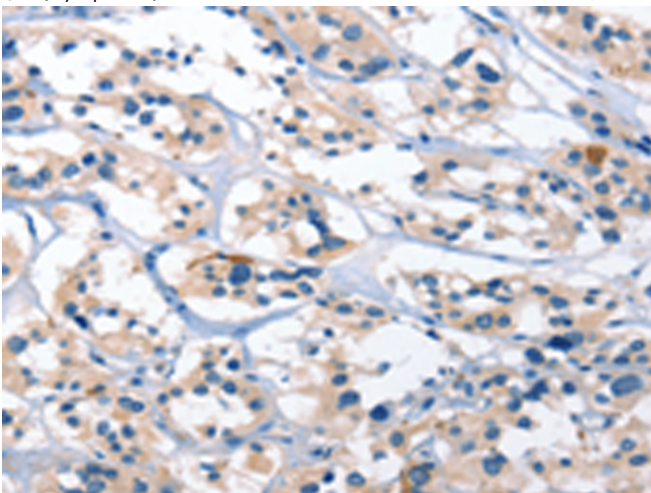
储存和运输: Store at -20°C. Avoid repeated freezing and thawing



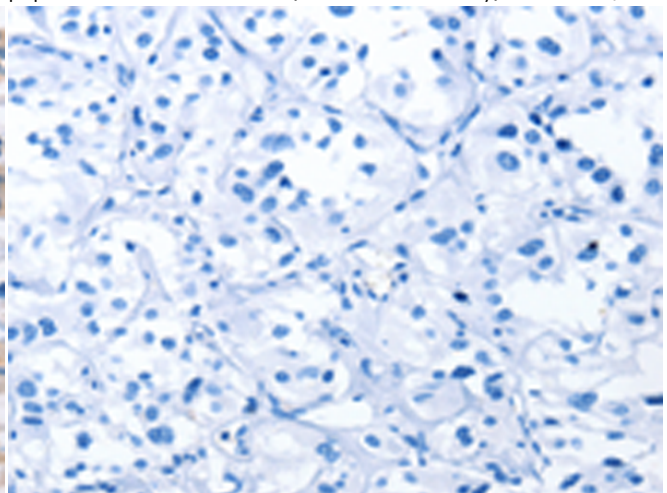
Immunohistochemistry analysis of paraffin embedded Human gastric cancer tissue using 220382(BNIP3L Antibody) at a dilution of 1/30(Cytoplasm).



In comparison with the IHC on the left, the same paraffin-embedded Human gastric cancer tissue is first treated with the synthetic peptide and then with 220382(Anti-BNIP3L Antibody) at dilution 1/30.



The image on the left is immunohistochemistry of paraffin-embedded Human thyroid cancer tissue using 220382(Anti-BNIP3L Antibody) at a dilution of 1/30.



In comparison with the IHC on the left, the same paraffin-embedded Human thyroid cancer tissue is first treated with synthetic peptide and then with D261458(Anti-BNIP3L Antibody) at dilution 1/30.



Product Description

Pioneering GTPase and Oncogene Product Development since 2010
