

## BMP15 RABBIT PAB

货号: S217214

产品全名: BMP15 兔多抗

基因符号: ODG2; POF4; GDF9B

**UNIPROT ID:** O95972 (Gene Accession - BC117264)

**背景:** The protein encoded by this gene is a member of the bone morphogenetic protein family which is part of the transforming growth factor-beta superfamily. The transforming growth factor-beta superfamily includes large families of growth and differentiation factors. It is thought that this protein may be involved in oocyte maturation and follicular development as a homodimer or by forming heterodimers with a related protein, Gdf9. Defects in this gene are the cause of ovarian dysgenesis 2.

**抗原:** Fusion protein of human BMP15

**经过测试的应用:** ELISA, WB, IHC

**推荐稀释比:** IHC: 50-200;WB: 200-1000;ELISA: 1000-2000

**种属反应性:** Rabbit

**克隆性:** Rabbit Polyclonal

**亚型:** Immunogen-specific rabbit IgG

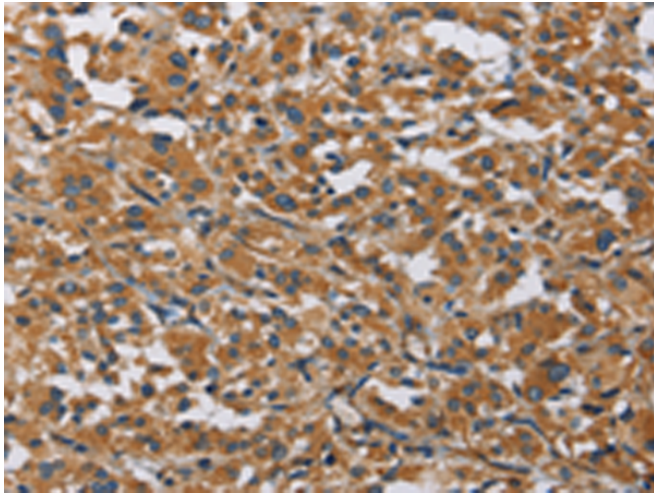
**纯化:** Antigen affinity purification

**种属反应性:** Human

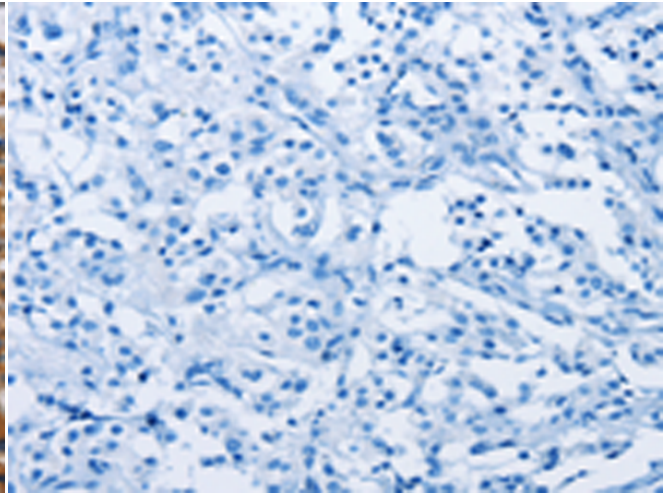
**成分:** PBS (without Mg<sup>2+</sup> and Ca<sup>2+</sup>), pH 7.4, 150 mM NaCl, 0.05% Sodium Azide and 40% glycerol

**研究领域:** Signal Transduction, Cardiovascular, Stem Cells, Developmental Biology

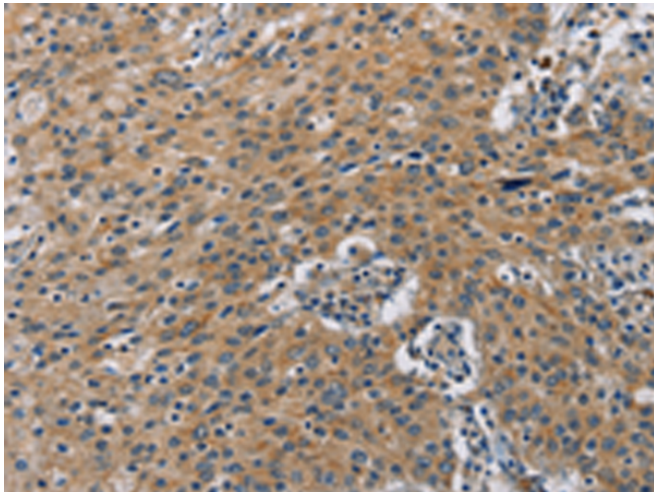
**储存和运输:** Store at -20°C. Avoid repeated freezing and thawing



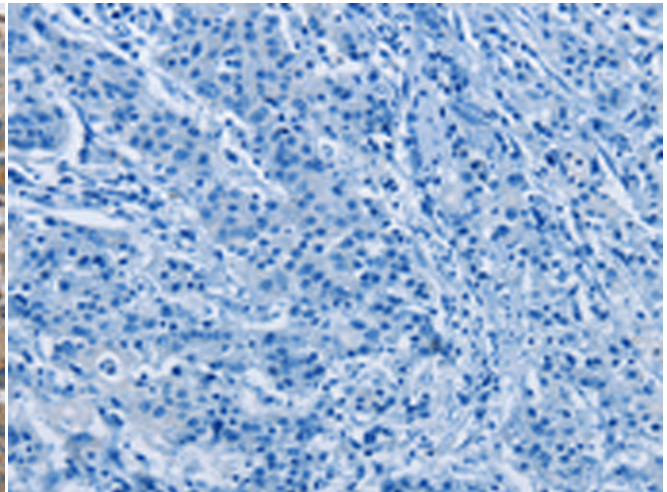
Immunohistochemistry analysis of paraffin embedded Human thyroid cancer tissue using 217214(BMP15 Antibody) at a dilution of 1/40(Cytoplasm).



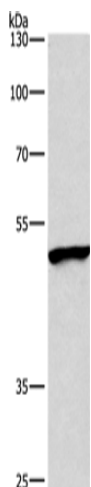
In comparison with the IHC on the left, the same paraffin-embedded Human thyroid cancer tissue is first treated with the fusion protein and then with 217214(Anti-BMP15 Antibody) at dilution 1/40.



The image on the left is immunohistochemistry of paraffin-embedded Human gastric cancer tissue using 217214(Anti-BMP15 Antibody) at a dilution of 1/40.



In comparison with the IHC on the left, the same paraffin-embedded Human gastric cancer tissue is first treated with fusion protein and then with D221992(Anti-BMP15 Antibody) at dilution 1/40.



Gel: 8%SDS-PAGE, Lysate: 40 µg;  
Lane: A549 cells;  
Primary antibody: 217214(BMP15 Antibody) at dilution 1/400;  
Secondary antibody: Goat anti rabbit IgG at 1/8000 dilution;  
Exposure time: 40 seconds



# Product Description

Pioneering GTPase and Oncogene Product Development since 2010

---