

## BMP11 RABBIT PAB

货号: N225771

产品全名: BMP11 兔多抗

基因符号 GDF11; BMP11; Bone morphogenetic protein 11; GDF-11; BMP-11

**UNIPROT ID:** O95390

**背景:** Secreted signal that acts globally to specify positional identity along the anterior/posterior axis during development. Play critical roles in patterning both mesodermal and neural tissues and in establishing the skeletal pattern.

**抗原:** A synthesized peptide derived from human BMP11

**经过测试的应用:** WB,IHC-P,ICC/IF

**推荐稀释比:** WB: 1/500-1/1000 IHC: 1/50-1/100 IF: 1/50-1/200

**种属反应性:** Rabbit

**克隆性:** Rabbit Polyclonal

**分子量:** Calculated MW: 45 kDa; Observed MW: 45 kDa

**亚型:** IgG

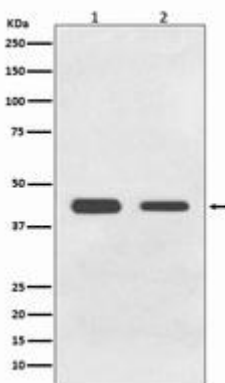
**纯化:** Affinity Chromatography

**种属反应性:** Human,Rat

**成分:** PBS (without Mg<sup>2+</sup> and Ca<sup>2+</sup>), pH 7.3 containing 50% glycerol, 0.5% BSA and 0.02% sodium azide

**研究领域:** Signal Transduction

**储存和运输:** Store at -20°C. Avoid repeated freezing and thawing



Western blot analysis of BMP11 in (1) HeLa lysates; (2) C6 lysates using BMP11 antibody.