

BMI1 RABBIT MAB

货号: N263240

产品全名: BMI1 兔单克隆抗体

基因符号 BMI1; PCGF4; RNF51; Polycomb complex protein BMI-1;
Polycomb group RING finger protein 4; RING finger protein 51

UNIPROT ID: P35226

背景: The polycomb group (PcG) of proteins contributes to the maintenance of cell identity, stem cell self-renewal, cell cycle regulation, and oncogenesis by maintaining the silenced state of genes that promote cell lineage specification, cell death, and cell-cycle arrest. PcG proteins exist in two complexes that cooperate to maintain long-term gene silencing through epigenetic chromatin modifications. The first complex, EED-EZH2, is recruited to genes by DNA-binding transcription factors and methylates histone H3 on Lys27.

抗原: Recombinant protein of human Bmi1

经过测试的应用: WB, ICC/IF, IP

推荐稀释比: WB: 1/500-1/1000 IF: 1/50-1/200 IP: 1/20

种属反应性: Rabbit

克隆性: Rabbit Monoclonal

克隆编号: R08-7A6

分子量: Calculated MW: 37 kDa; Observed MW: 43 kDa

亚型: IgG

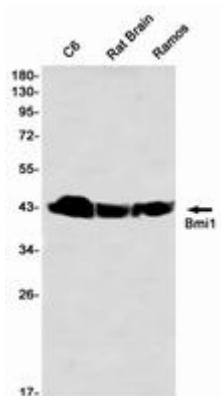
纯化: Affinity Purified

种属反应性: Human, Mouse and Rat

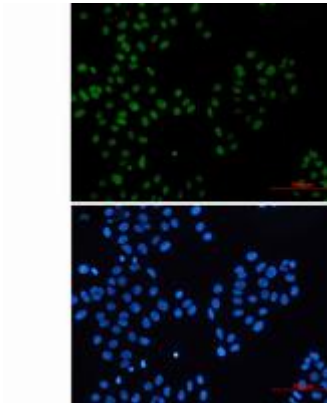
成分: PBS (without Mg²⁺ and Ca²⁺), pH 7.3 containing 50% glycerol, 0.5% BSA and 0.02% sodium azide

研究领域: Cell Biology

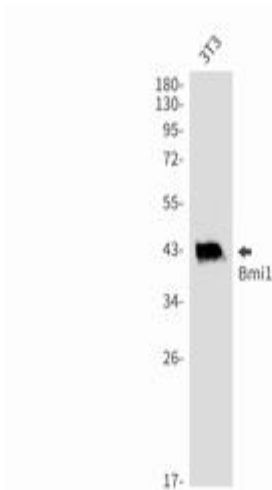
储存和运输: Store at -20°C. Avoid repeated freezing and thawing



Western blot analysis of Bmi1 in C6, Rat Brain, Ramos lysates using Bmi1 antibody



Immunocytochemistry analysis of Bmi1 (green) in HeLa using Bmi1 antibody, and DAPI (blue).



Western blot analysis of Bmi1 in 3T3 lysates using Bmi1 antibody.