

BLM RABBIT PAB

货号: S221617

产品全名: BLM 兔多抗

基因符号 BS; RECQ2; RECQL2; RECQL3

UNIPROT ID: P54132 (Gene Accession - NP_000048)

背景: The Bloom syndrome gene product is related to the RecQ subset of DExH box-containing DNA helicases and has both DNA-stimulated ATPase and ATP-dependent DNA helicase activities. Mutations causing Bloom syndrome delete or alter helicase motifs and may disable the 3'-5' helicase activity. The normal protein may act to suppress inappropriate recombination.

抗原: Synthetic peptide of human BLM

经过测试的应用: ELISA, IHC

推荐稀释比: IHC: 25-100; ELISA: 5000-10000

种属反应性: Rabbit

克隆性: Rabbit Polyclonal

亚型: Immunogen-specific rabbit IgG

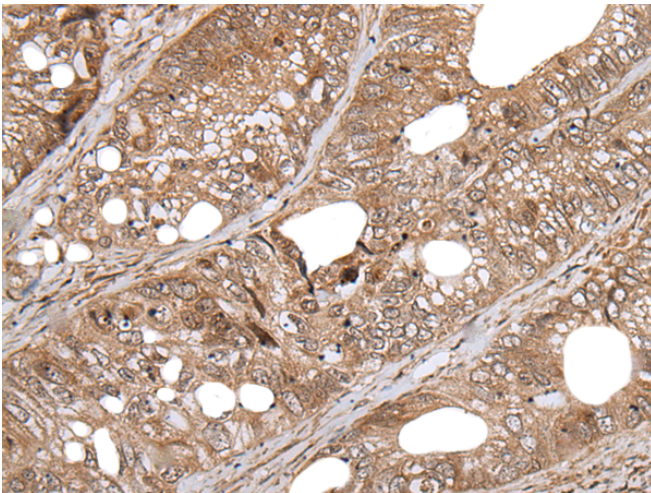
纯化: Antigen affinity purification

种属反应性: Human

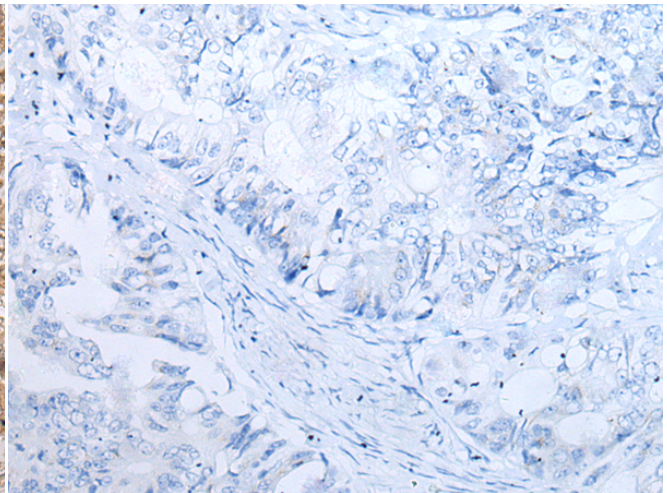
成分: PBS (without Mg²⁺ and Ca²⁺), pH 7.4, 150 mM NaCl, 0.05% Sodium Azide and 40% glycerol

研究领域: Epigenetics and Nuclear Signaling

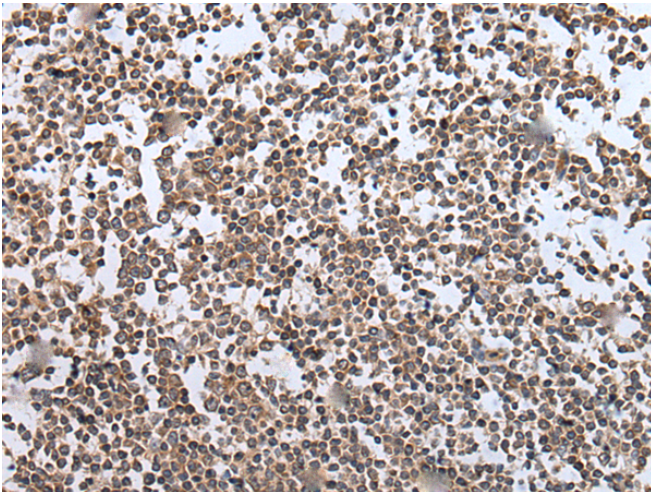
储存和运输: Store at -20°C. Avoid repeated freezing and thawing



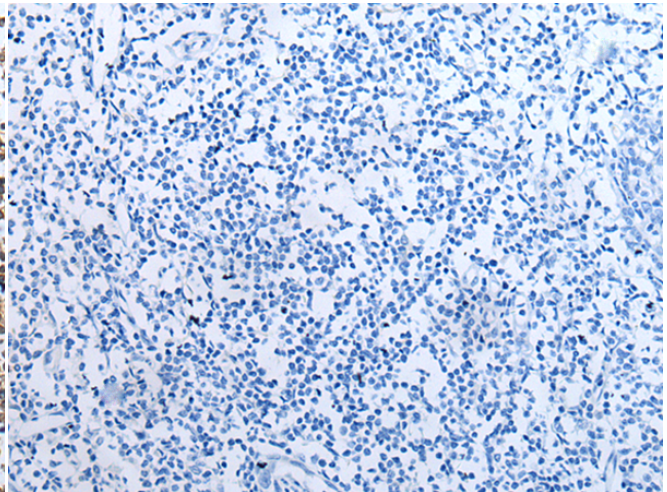
Immunohistochemistry analysis of paraffin embedded Human colorectal cancer tissue using 221617(BLM Antibody) at a dilution of 1/35(Nucleus).



In comparison with the IHC on the left, the same paraffin-embedded Human colorectal cancer tissue is first treated with the synthetic peptide and then with 221617(Anti-BLM Antibody) at dilution 1/35.



The image on the left is immunohistochemistry of paraffin-embedded Human tonsil tissue using 221617(Anti-BLM Antibody) at a dilution of 1/35.



In comparison with the IHC on the left, the same paraffin-embedded Human tonsil tissue is first treated with synthetic peptide and then with D263279(Anti-BLM Antibody) at dilution 1/35.



Product Description

Pioneering GTPase and Oncogene Product Development since 2010
