

BIN1 RABBIT MAB

货号: N261925

产品全名: BIN1 兔单克隆抗体

基因符号 BIN1; AMPHL; Myc box-dependent-interacting protein 1; Amphiphysin II; Amphiphysin-like protein; Box-dependent myc-interacting protein 1; Bridging integrator 1

UNIPROT ID: O00499

背景: This gene encodes several isoforms of a nucleocytoplasmic adaptor protein, one of which was initially identified as a MYC-interacting protein with features of a tumor suppressor. Isoforms that are expressed in the central nervous system may be involved in synaptic vesicle endocytosis and may interact with dynamin, synaptojanin, endophilin, and clathrin. Isoforms that are expressed in muscle and ubiquitously expressed isoforms localize to the cytoplasm and nucleus and activate a caspase-independent apoptotic process. Studies in mouse suggest that this gene plays an important role in cardiac muscle development. Alternate splicing of the gene results in ten transcript variants encoding different isoforms. Aberrant splice variants expressed in tumor cell lines have also been described.

抗原: Recombinant protein of human BIN1

经过测试的应用: WB,IHC-F,IHC-P,ICC/IF

推荐稀释比: WB: 1/500-1/1000 IHC: 1/50-1/100 IF: 1/50-1/200

种属反应性: Rabbit

克隆性: Rabbit Monoclonal

克隆编号: R07-2C1

分子量: Calculated MW: 65 kDa; Observed MW: 45-80 kDa

亚型: IgG

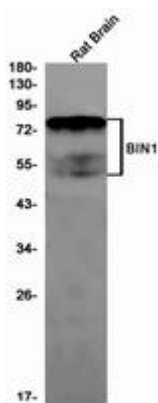
纯化: Affinity Purified

种属反应性: Human, Mouse and Rat

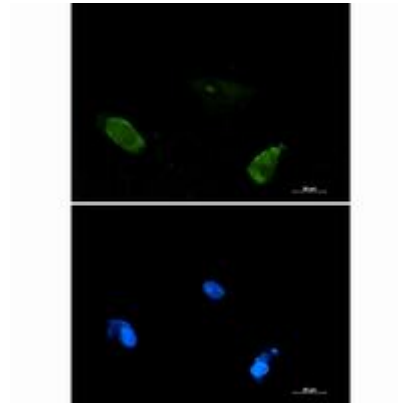
成分: PBS (without Mg²⁺ and Ca²⁺), pH 7.3 containing 50% glycerol, 0.5% BSA and 0.02% sodium azide

研究领域: Cell Biology

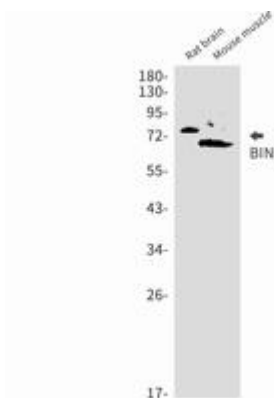
储存和运输: Store at -20°C. Avoid repeated freezing and thawing



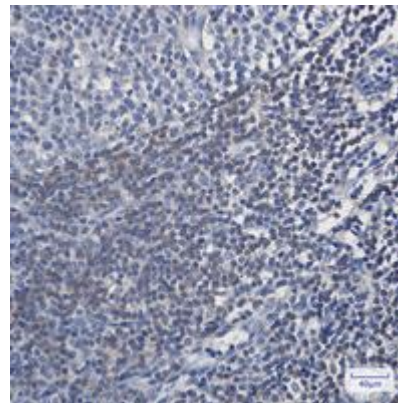
Western blot analysis of BIN1 in rat Brain lysates using BIN1 antibody



Immunocytochemistry analysis of BIN1 (green) in U87-MG using BIN1 antibody, and DAPI (blue).



Western blot analysis of BIN1 in rat brain, mouse muscle lysates using BIN1 antibody.



Immunohistochemistry analysis of paraffin-embedded Human tonsil using BIN1 antibody. High-pressure and temperature Sodium Citrate pH 6.0 was used for antigen retrieval.