

BICRA RABBIT PAB

货号: S222085

产品全名: BICRA 兔多抗

基因符号: GLTSCR1

UNIPROT ID: Q9NZM4 (Gene Accession - NP_056526)

背景: May play a role in BRD4-mediated gene transcription.

抗原: Synthetic peptide of human BICRA

经过测试的应用: ELISA, IHC

推荐稀释比: IHC: 50-300; ELISA: 5000-10000

种属反应性: Rabbit

克隆性: Rabbit Polyclonal

亚型: Immunogen-specific rabbit IgG

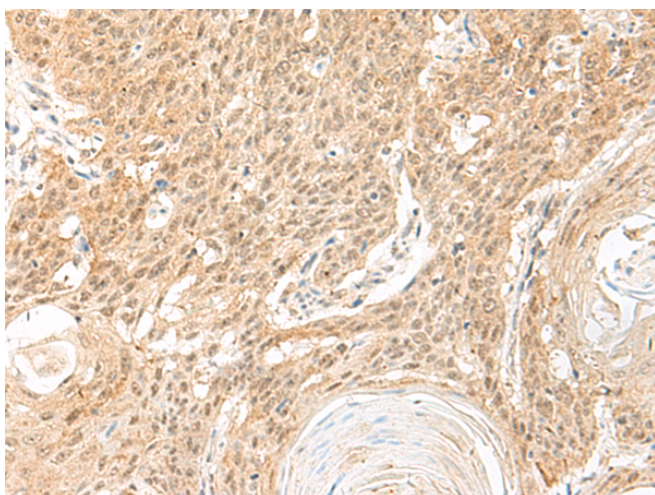
纯化: Antigen affinity purification

种属反应性: Human

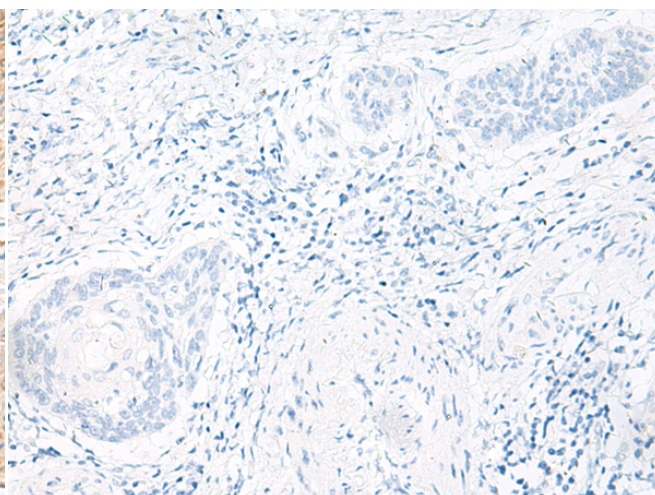
成分: PBS (without Mg²⁺ and Ca²⁺), pH 7.4, 150 mM NaCl, 0.05% Sodium Azide and 40% glycerol

研究领域: Cancer, Cell Biology

储存和运输: Store at -20°C. Avoid repeated freezing and thawing



Immunohistochemistry analysis of paraffin embedded Human esophagus cancer tissue using 222085 (BICRA Antibody) at a dilution of 1/60 (Nucleus).



In comparison with the IHC on the left, the same paraffin-embedded Human esophagus cancer tissue is first treated with the synthetic peptide and then with 222085 (Anti-BICRA Antibody) at dilution 1/60.