

## BICD2 RABBIT PAB

货号: S221615

产品全名: BICD2 兔多抗

基因符号 SMALED2; SMALED2A; SMALED2B; bA526D8.1

**UNIPROT ID:** Q8TD16 (Gene Accession - NP\_056065 )

**背景:** This gene is one of two human homologs of *Drosophila* bicaudal-D and a member of the Bicoid family. It has been implicated in dynein-mediated, minus end-directed motility along microtubules. It has also been reported to be a phosphorylation target of NIMA related kinase 8. Two alternative splice variants have been described.

**抗原:** Synthetic peptide of human BICD2

**经过测试的应用:** ELISA, IHC

**推荐稀释比:** IHC: 20-100; ELISA: 5000-10000

**种属反应性:** Rabbit

**克隆性:** Rabbit Polyclonal

**亚型:** Immunogen-specific rabbit IgG

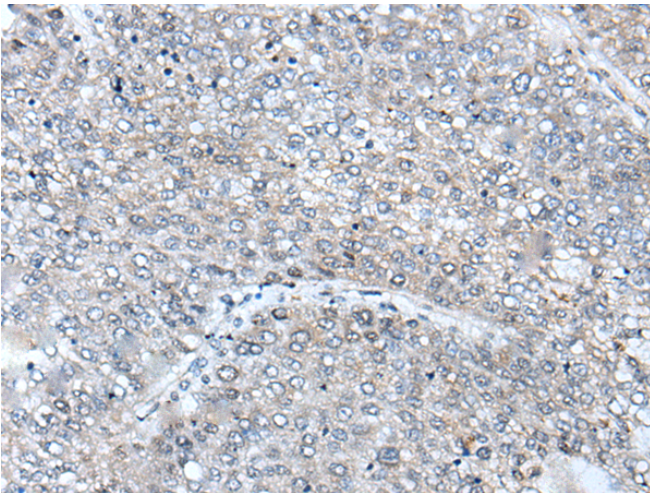
**纯化:** Antigen affinity purification

**种属反应性:** Human

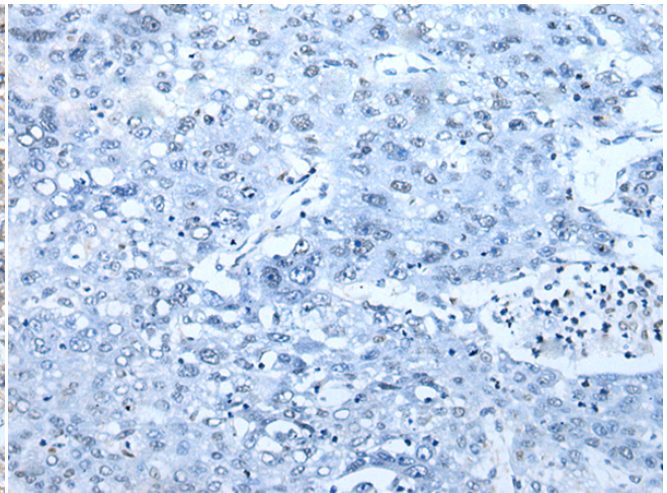
**成分:** PBS (without Mg<sup>2+</sup> and Ca<sup>2+</sup>), pH 7.4, 150 mM NaCl, 0.05% Sodium Azide and 40% glycerol

**研究领域:** Signal Transduction

**储存和运输:** Store at -20°C. Avoid repeated freezing and thawing



Immunohistochemistry analysis of paraffin embedded Human liver cancer tissue using 221615(BICD2 Antibody) at a dilution of 1/20(Cytoplasm).



In comparison with the IHC on the left, the same paraffin-embedded Human liver cancer tissue is first treated with the synthetic peptide and then with 221615(Anti-BICD2 Antibody) at dilution 1/20.