

BGLAP RABBIT PAB

货号: S219676

产品全名: BGLAP 兔多抗

基因符号: OC; BGP; OCN

UNIPROT ID: P02818 (Gene Accession - NP_954642.1)

背景: This gene belongs to the osteocalcin/matrix Gla protein family. The protein is a part of the bone protein. It binds strongly to apatite and calcium. BGLAP obtain peak expression at the day of 21 during osteogenesis.

抗原: Synthetic peptide of human BGLAP

经过测试的应用: ELISA, IHC

推荐稀释比: IHC: 50-200; ELISA: 1000-5000

种属反应性: Rabbit

克隆性: Rabbit Polyclonal

亚型: Immunogen-specific rabbit IgG

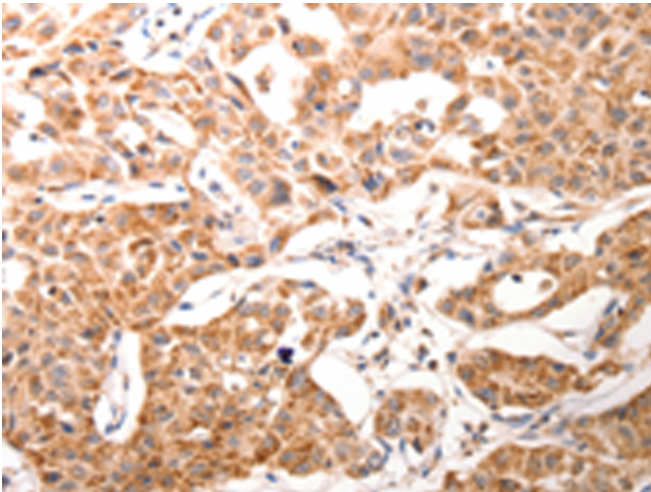
纯化: Antigen affinity purification

种属反应性: Human

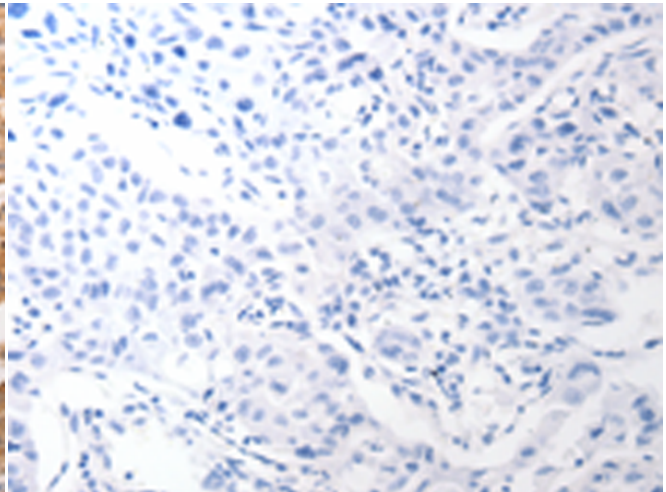
成分: PBS (without Mg²⁺ and Ca²⁺), pH 7.4, 150 mM NaCl, 0.05% Sodium Azide and 40% glycerol

研究领域: Signal Transduction, Stem Cells

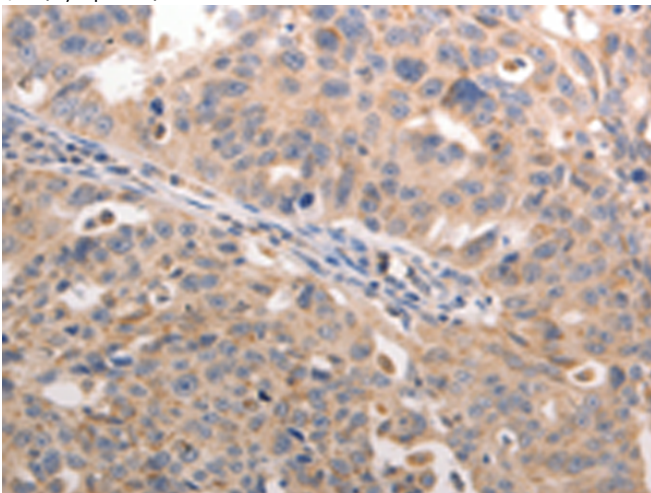
储存和运输: Store at -20°C. Avoid repeated freezing and thawing



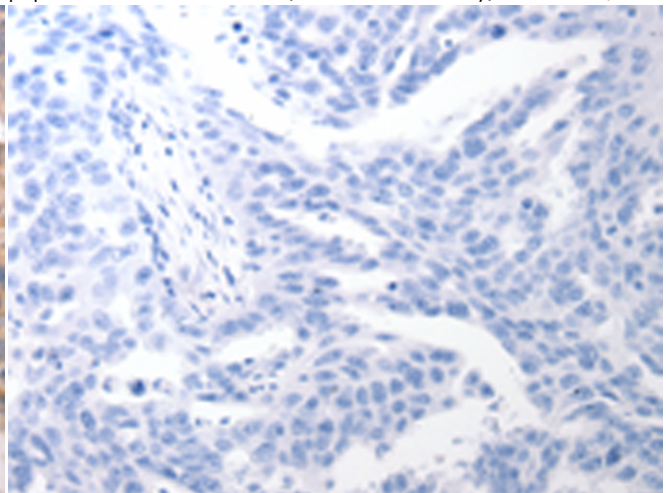
Immunohistochemistry analysis of paraffin embedded Human ovarian cancer tissue using 219676(BGLAP Antibody) at a dilution of 1/60(Cytoplasm).



In comparison with the IHC on the left, the same paraffin-embedded Human ovarian cancer tissue is first treated with the synthetic peptide and then with 219676(Anti-BGLAP Antibody) at dilution 1/60.



The image on the left is immunohistochemistry of paraffin-embedded Human lung cancer tissue using 219676(Anti-BGLAP Antibody) at a dilution of 1/60.



In comparison with the IHC on the left, the same paraffin-embedded Human lung cancer tissue is first treated with synthetic peptide and then with D260129(Anti-BGLAP Antibody) at dilution 1/60.



Product Description

Pioneering GTPase and Oncogene Product Development since 2010
