

BEX2 RABBIT PAB

货号: S218955

产品全名: BEX2 兔多抗

基因符号: BEX1; DJ79P11.1

UNIPROT ID: Q9BXY8 (Gene Accession - BC015522)

背景: This gene belongs to the brain expressed X-linked gene family. The encoded protein interacts with the transcription factor LIM domain only 2 in a DNA-binding complex that recognizes the E-box element and promotes transcription. This gene has been found to be a tumor suppressor that is silenced in human glioma. In breast cancer cells, this gene product modulates apoptosis in response to estrogen and tamoxifen, and enhances the anti-proliferative effect of tamoxifen. Multiple transcript variants encoding different isoforms have been found for this gene.

抗原: Fusion protein of human BEX2

经过测试的应用: ELISA, IHC

推荐稀释比: IHC: 40-200; ELISA: 5000-10000

种属反应性: Rabbit

克隆性: Rabbit Polyclonal

亚型: Immunogen-specific rabbit IgG

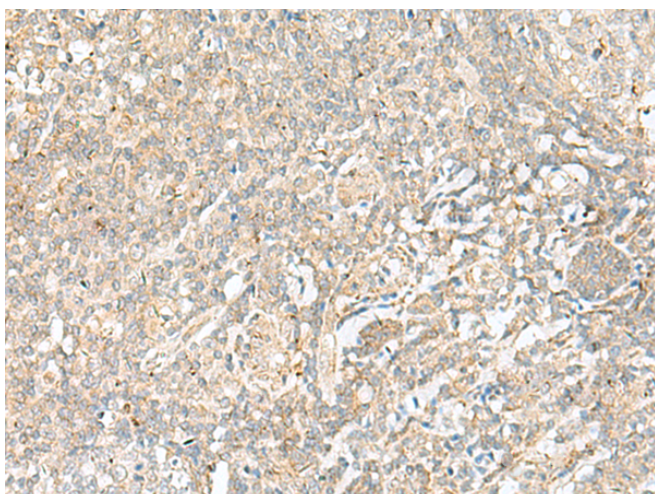
纯化: Antigen affinity purification

种属反应性: Human

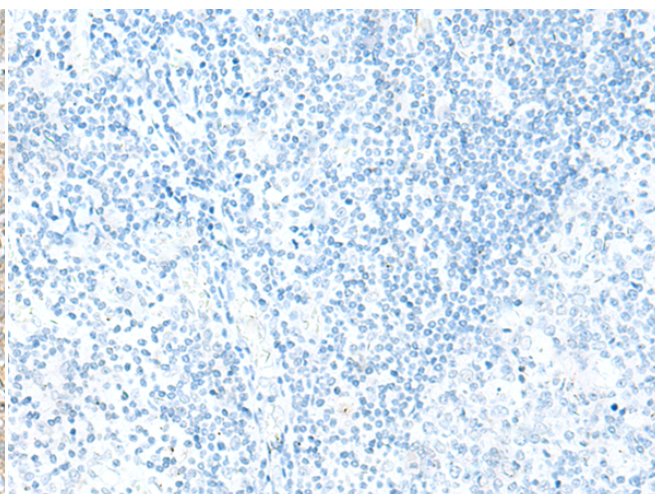
成分: PBS (without Mg²⁺ and Ca²⁺), pH 7.4, 150 mM NaCl, 0.05% Sodium Azide and 40% glycerol

研究领域: Neuroscience

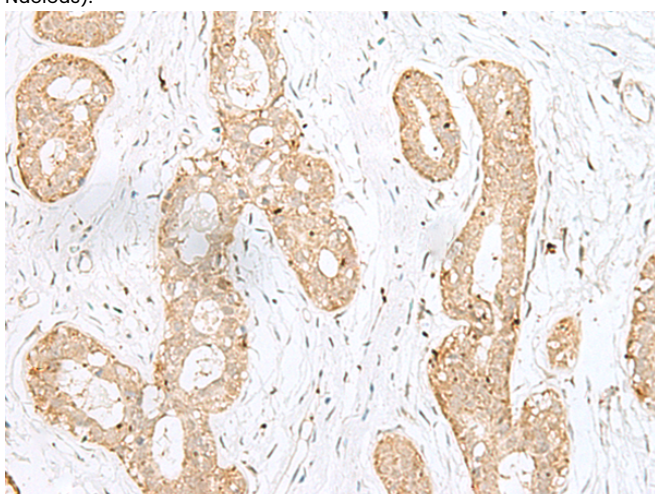
储存和运输: Store at -20°C. Avoid repeated freezing and thawing



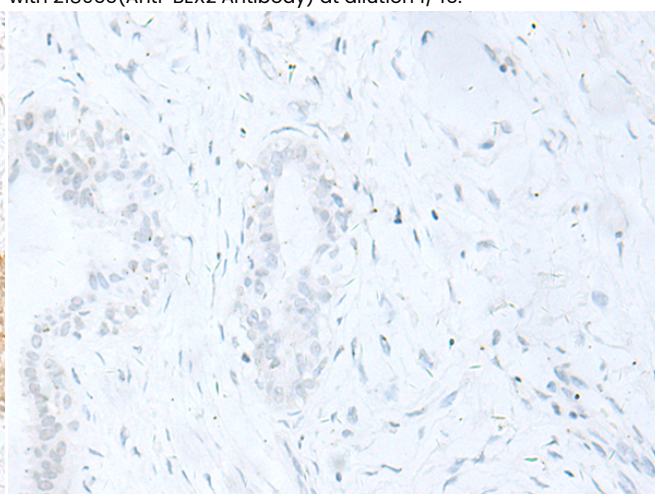
Immunohistochemistry analysis of paraffin embedded Human tonsil tissue using 218955(BEX2 Antibody) at a dilution of 1/45(Cytoplasm or Nucleus).



In comparison with the IHC on the left, the same paraffin-embedded Human tonsil tissue is first treated with the fusion protein and then with 218955(Anti-BEX2 Antibody) at dilution 1/45.



The image on the left is immunohistochemistry of paraffin-embedded Human breast cancer tissue using 218955(Anti-BEX2 Antibody) at a dilution of 1/45.



In comparison with the IHC on the left, the same paraffin-embedded Human breast cancer tissue is first treated with fusion protein and then with D225564(Anti-BEX2 Antibody) at dilution 1/45.



Product Description

Pioneering GTPase and Oncogene Product Development since 2010
