

## BETA IV TUBULIN RABBIT MAB

货号: N261923

产品全名: beta IV Tubulin 兔单克隆抗体

基因符号 DYT4; TUBB4; beta-5

**UNIPROT ID:** P04350

**背景:** Tubulin is the major constituent of microtubules. It binds two moles of GTP, one at an exchangeable site on the beta chain and one at a non-exchangeable site on the alpha chain.

**抗原:** A synthetic peptide of human beta IV Tubulin

**经过测试的应用:** WB,IHC-F,IHC-P,ICC/IF

**推荐稀释比:** WB: 1/500-1/1000 IHC: 1/50-1/100 IF: 1/50-1/200

**种属反应性:** Rabbit

**克隆性:** Rabbit Monoclonal

**克隆编号:** R06-6A5

**分子量:** Calculated MW: 50 kDa; Observed MW: 50 kDa

**亚型:** IgG

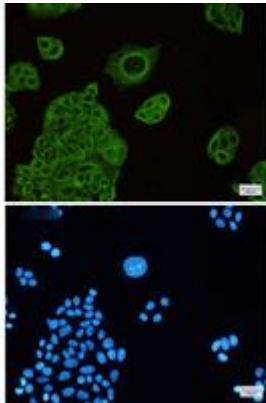
**纯化:** Affinity Purified

**种属反应性:** Human, Mouse and Rat

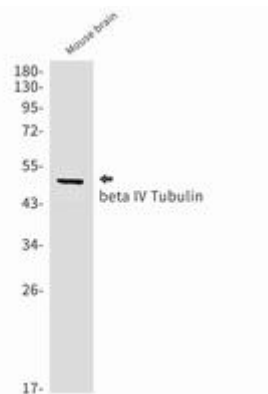
**成分:** PBS (without Mg<sup>2+</sup> and Ca<sup>2+</sup>), pH 7.3 containing 50% glycerol, 0.5% BSA and 0.02% sodium azide

**研究领域:** Tags & Cell Markers

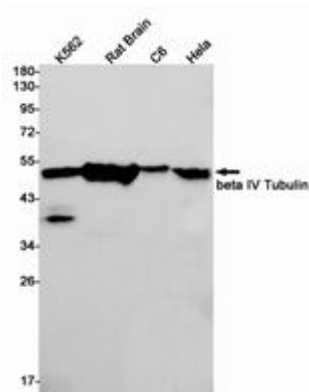
**储存和运输:** Store at -20°C. Avoid repeated freezing and thawing



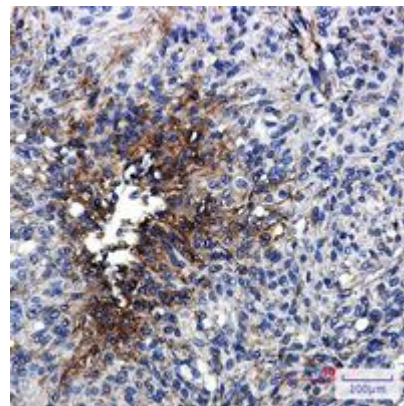
Immunocytochemistry analysis of beta IV Tubulin (green) in Hela using beta IV Tubulin antibody, and DAPI (blue)



Western blot analysis of beta IV Tubulin in mouse brain lysates using beta IV Tubulin antibody.



Western blot analysis of beta IV Tubulin in K562, rat Brain, C6, Hela lysates using beta IV Tubulin antibody.



Immunohistochemistry analysis of paraffin-embedded Human brain using beta IV Tubulin antibody. High-pressure and temperature Sodium Citrate pH 6.0 was used for antigen retrieval.