

BETA III TUBULIN RABBIT MAB

货号: N261921

产品全名: beta III Tubulin 兔单克隆抗体

基因符号 TUBB3; TUBB4; Tubulin beta-3 chain; Tubulin beta-4 chain;
Tubulin beta-III

UNIPROT ID: Q13509

背景: TUBB3 Tubulin is the major constituent of microtubules. It binds two moles of GTP, one at an exchangeable site on the beta chain and one at a non-exchangeable site on the alpha-chain. TUBB3 plays a critical role in proper axon guidance and maintenance.

抗原: A synthetic peptide of human beta III Tubulin

经过测试的应用: WB,IHC-F,IHC-P,ICC/IF,IP

推荐稀释比: WB: 1/500-1/1000 IHC: 1/50-1/100 IF: 1/50-1/200 IP: 1/20

种属反应性: Rabbit

克隆性: Rabbit Monoclonal

克隆编号: R02-4G7

分子量: Calculated MW: 50 kDa; Observed MW: 50 kDa

亚型: IgG

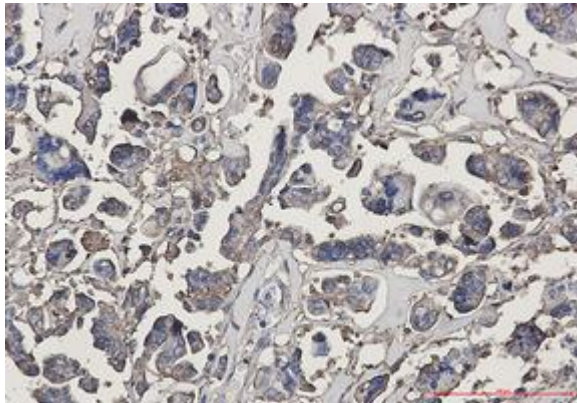
纯化: Affinity Purified

种属反应性: Human, Mouse and Rat

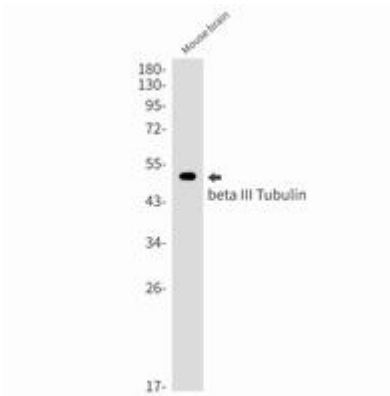
成分: PBS (without Mg²⁺ and Ca²⁺), pH 7.3 containing 50% glycerol, 0.5% BSA and 0.02% sodium azide

研究领域: Signal Transduction

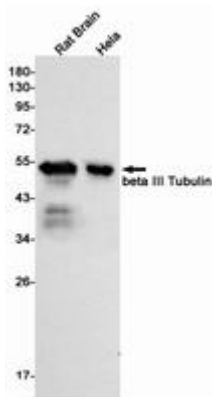
储存和运输: Store at -20°C. Avoid repeated freezing and thawing



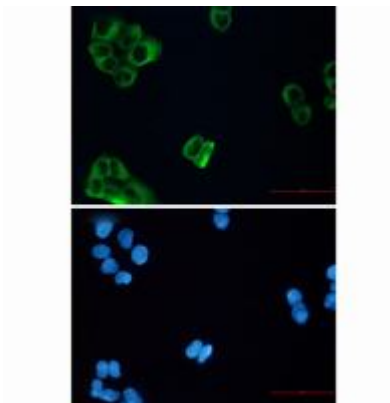
Immunohistochemistry analysis of paraffin-embedded Human Cholangiocarcinoma using beta III Tubulin antibody. High-pressure and temperature Sodium Citrate pH 6.0 was used for antigen retrieval.



Western blot analysis of beta III Tubulin in mouse brain lysates using beta III Tubulin antibody.



Western blot analysis of beta III Tubulin in rat Brain, HeLa lysates using beta III Tubulin antibody.



Immunocytochemistry analysis of beta III Tubulin (green) in HeLa using beta III Tubulin antibody, and DAPI(blue).