

BETA I TUBULIN (1H10) MOUSE MAB

货号: N261268

产品全名: beta I Tubulin (1H10) 小鼠单抗

基因符号 beta I tubulin; TBB1; TUBB1; Tubulin beta I; Class VI beta tubulin

UNIPROT ID: Q9H4B7

背景: Tubulin is the major constituent of microtubules. It binds two moles of GTP, one at an exchangeable site on the beta chain and one at a non-exchangeable site on the alpha chain (By similarity).

抗原: Synthetic Peptide of β I tubulin

经过测试的应用: WB,IHC-F,IHC-P,ICC/IF

推荐稀释比: WB: 1/500-1/1000 IHC: 1/50-1/100 IF: 1/50-1/200

种属反应性: Mouse

克隆性: Mouse Monoclonal

克隆编号: 1H10-8B8-3D2

分子量: Calculated MW: 50 kDa; Observed MW: 50 kDa

亚型: IgG1

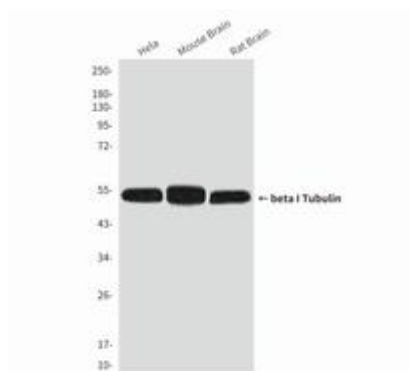
纯化: Affinity Purified

种属反应性: Human,Rat,Mouse

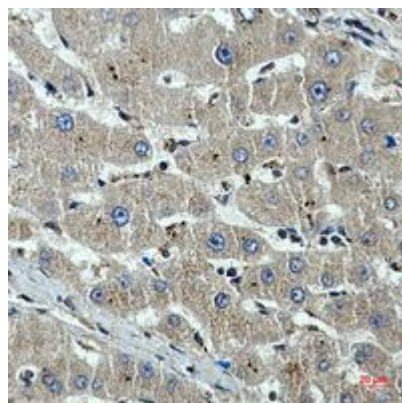
成分: PBS (without Mg^{2+} and Ca^{2+}), pH 7.3 containing 50% glycerol, 0.5% BSA and 0.02% sodium azide

研究领域: Signal Transduction

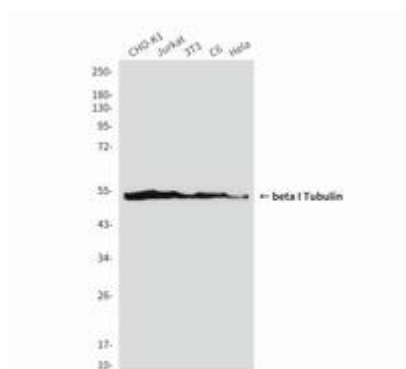
储存和运输: Store at $-20^{\circ}C$. Avoid repeated freezing and thawing



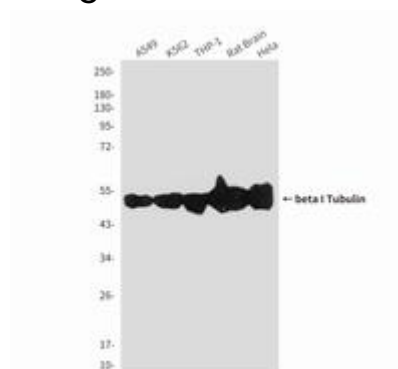
Western blot analysis of beta I Tubulin (1H10) in Hela, mouse Brain Tissue, rat Brain Tissue lysates using beta I Tubulin (1H10) antibody



Immunohistochemistry analysis of paraffin-embedded beta I Tubulin in Human liver cancer using beta I Tubulin (1H10) antibody. High-pressure and temperature Sodium Citrate pH 6.0 was used for antigen retrieval.



Western blot analysis of beta I Tubulin (1H10) in CHO-K1, Jurkat, 3T3, C6 and Hela lysates using beta I Tubulin (1H10) antibody



Western blot analysis of beta I Tubulin (1H10) in A549, K562, THP-1, rat Brain, Hela lysates using beta I Tubulin (1H10) antibody.