

BETA CATENIN RABBIT MAB

货号: N261678

产品全名: beta Catenin 兔单克隆抗体

基因符号 CTNNB1; CTNNB; OK/SW-cl.35; Catenin beta-1; Beta-catenin

UNIPROT ID: P35222

背景: Beta-catenin is an adherens junction protein. Adherens junctions (AJs; also called the zonula adherens) are critical for the establishment and maintenance of epithelial layers, such as those lining organ surfaces. AJs mediate adhesion between cells, communicate a signal that neighboring cells are present, and anchor the actin cytoskeleton. In serving these roles, AJs regulate normal cell growth and behavior.

抗原: A synthetic peptide of human beta Catenin

经过测试的应用: WB,IHC-P,IP

推荐稀释比: WB: 1/500-1/1000 IHC: 1/50-1/100 IP: 1/20

种属反应性: Rabbit

克隆性: Rabbit Monoclonal

克隆编号: R06-1E2

分子量: Calculated MW: 85 kDa; Observed MW: 85 kDa

亚型: IgG

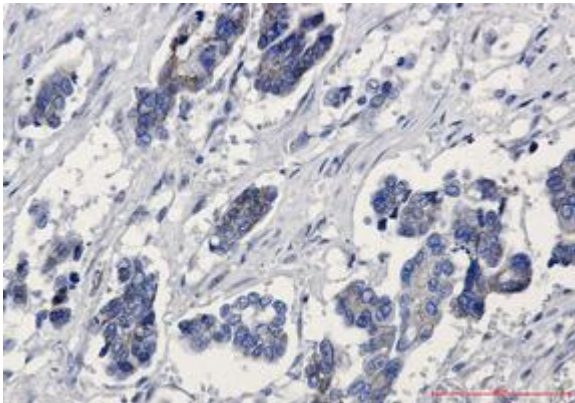
纯化: Affinity Purified

种属反应性: Human, Mouse and Rat,Hamster

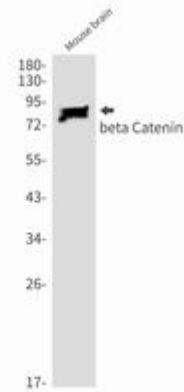
成分: PBS (without Mg²⁺ and Ca²⁺), pH 7.3 containing 50% glycerol, 0.5% BSA and 0.02% sodium azide

研究领域: Hypoxia Signal Transduction& Hypoxia-Inhibition

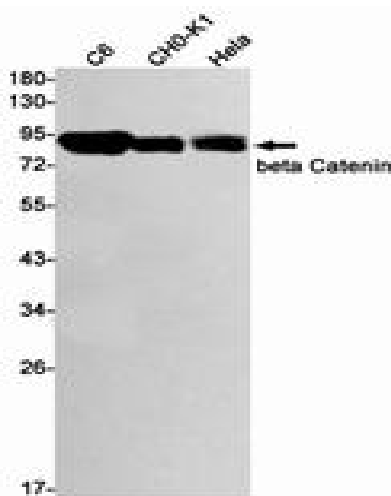
储存和运输: Store at -20°C. Avoid repeated freezing and thawing



Immunohistochemistry analysis of paraffin-embedded Human Cholangiocarcinoma using beta Catenin antibody. High-pressure and temperature Sodium Citrate pH 6.0 was used for antigen retrieval.



Western blot analysis of beta Catenin in mouse brain lysates using beta Catenin antibody.



Western blot analysis of beta Catenin in C6, CHO-K1, HeLa lysates using beta Catenin antibody.