

## BETA CATENIN RABBIT MAB

货号: N261920

产品全名: beta Catenin 兔单克隆抗体

基因符号 CTNNB1; CTNNB; OK/SW-cl.35; Catenin beta-1; Beta-catenin

**UNIPROT ID:** P35222

背景: Beta-catenin is an adherens junction protein. Adherens junctions (AJs; also called the zonula adherens) are critical for the establishment and maintenance of epithelial layers, such as those lining organ surfaces. AJs mediate adhesion between cells, communicate a signal that neighboring cells are present, and anchor the actin cytoskeleton. In serving these roles, AJs regulate normal cell growth and behavior.

抗原: A synthetic peptide of human beta Catenin

经过测试的应用: WB, ICC/IF

推荐稀释比: WB: 1/500-1/1000 IF: 1/50-1/200

种属反应性: Rabbit

克隆性: Rabbit Monoclonal

克隆编号: R07-9D5

分子量: Calculated MW: 85 kDa; Observed MW: 85 kDa

亚型: IgG

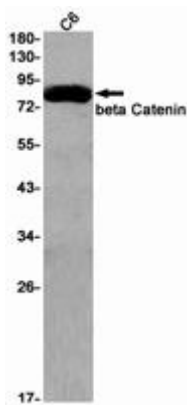
纯化: Affinity Purified

种属反应性: Human, Mouse and Rat

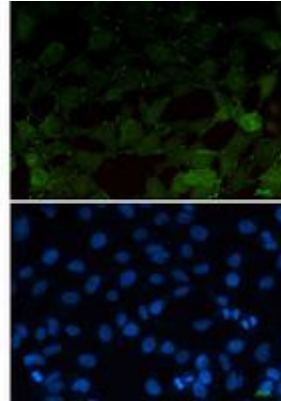
成分: PBS (without Mg<sup>2+</sup> and Ca<sup>2+</sup>), pH 7.3 containing 50% glycerol, 0.5% BSA and 0.02% sodium azide

研究领域: Signal Transduction

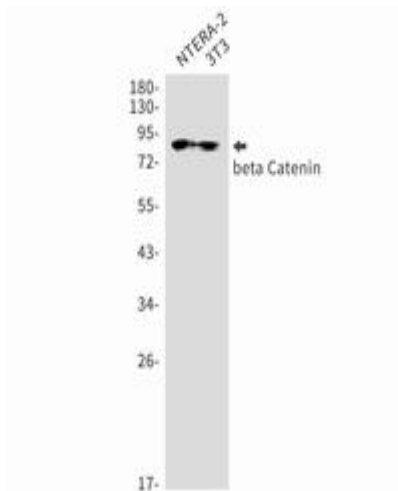
储存和运输: Store at -20°C. Avoid repeated freezing and thawing



Western blot analysis of beta Catenin in C6 lysates using beta Catenin antibody



Immunocytochemistry analysis of beta Catenin (green) in 293T using beta Catenin antibody, and DAPI (blue).



Western blot analysis of beta Catenin in NTERA-2, 3T3 lysates using beta Catenin antibody.