

BETA CATENIN (7E2) MOUSE MAB

货号: N261267

产品全名: beta Catenin (7E2) 小鼠单抗

基因符号 CTNNB1; CTNNB; OK/SW-cl.35; Catenin beta-1; Beta-catenin

UNIPROT ID: P35222

背景: Beta-catenin is an adherens junction protein. Adherens junctions (AJs; also called the zonula adherens) are critical for the establishment and maintenance of epithelial layers, such as those lining organ surfaces. AJs mediate adhesion between cells, communicate a signal that neighboring cells are present, and anchor the actin cytoskeleton. In serving these roles, AJs regulate normal cell growth and behavior.

抗原: Recombinant Protein of Catenin- β

经过测试的应用: WB,IHC-P

推荐稀释比: WB: 1/500-1/1000 IHC: 1/50-1/100

种属反应性: Mouse

克隆性: Mouse Monoclonal

克隆编号: 7E2-2D3-6G4

分子量: Calculated MW: 85 kDa; Observed MW: 92 kDa

亚型: IgG1

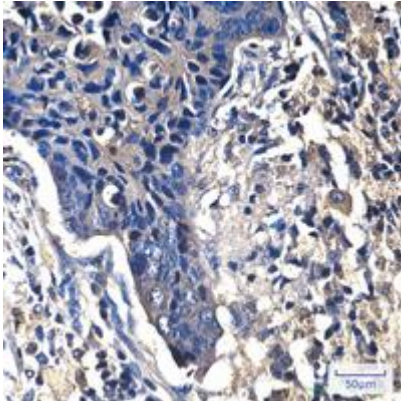
纯化: Affinity Purified

种属反应性: Human, Mouse and Rat

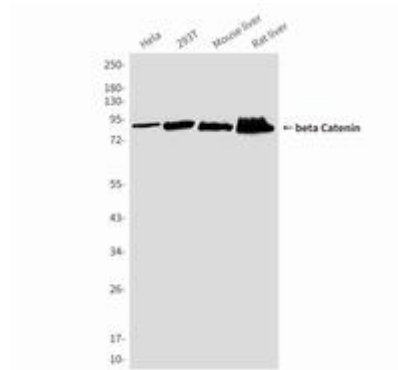
成分: PBS (without Mg²⁺ and Ca²⁺), pH 7.3 containing 50% glycerol, 0.5% BSA and 0.02% sodium azide

研究领域: Signal Transduction

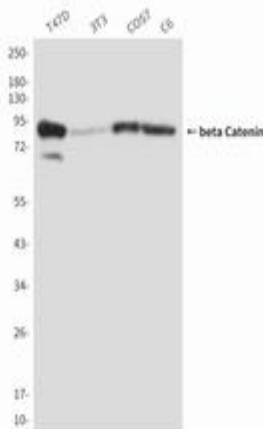
储存和运输: Store at -20°C. Avoid repeated freezing and thawing



Immunohistochemistry analysis of paraffin-embedded Human lung cancer tissue using beta Catenin (7E2) antibody. High-pressure and temperature Sodium Citrate pH 6.0 was used for antigen retrieval.



Western blot analysis of beta Catenin (7E2) in Hela, 293T, mouse Liver, rat Liver lysates using beta Catenin antibody.



Western blot analysis of beta Catenin (7E2) in T47D, 3T3, COS7 and C6 lysates using beta Catenin antibody.