

## BDKRB2 RABBIT MAB

货号: N263120

产品全名: BDKRB2 兔单克隆抗体

基因符号 B2BKR; B2BRA; B2R; BDKRB2; BK2 receptor; BK2R; BKR2; BR B2; BRB2; Kinin B2

**UNIPROT ID:** P30411

背景: Receptor for bradykinin. It is associated with G proteins that activate a phosphatidylinositol-calcium second messenger system.

抗原: A synthetic peptide of human BDKRB2

经过测试的应用: WB,IP

推荐稀释比: WB: 1/500-1/1000 IP: 1/20

种属反应性: Rabbit

克隆性: Rabbit Monoclonal

克隆编号: R07-013

分子量: Calculated MW: 44 kDa; Observed MW: 80-100 kDa

亚型: IgG

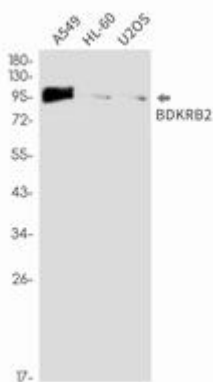
纯化: Affinity Purified

种属反应性: Human

成分: PBS (without Mg<sup>2+</sup> and Ca<sup>2+</sup>), pH 7.3 containing 50% glycerol, 0.5% BSA and 0.02% sodium azide

研究领域: Cardiovascular

储存和运输: Store at -20°C. Avoid repeated freezing and thawing



Western blot analysis of BDKRB2 in A549, HL-60, U2OS lysates using BDKRB2 antibody.