

BDH2 RABBIT PAB

货号: S218358

产品全名: BDH2 兔多抗

基因符号 DHRS6; EFA6R; SDR15C1; UCPA-OR; UNQ6308; PRO20933

UNIPROT ID: Q9BUT1 (Gene Accession - BC001953)

背景: Dehydrogenase that mediates the formation of 2,5-dihydroxybenzoic acid (2,5-DHBA), a siderophore that shares structural similarities with bacterial enterobactin and associates with LCN2, thereby playing a key role in iron homeostasis and transport. Also acts as a 3-hydroxybutyrate dehydrogenase (By similarity).

抗原: Full length fusion 蛋白

经过测试的应用: ELISA, WB, IHC

推荐稀释比: IHC: 50-300;WB: 500-2000;ELISA: 5000-10000

种属反应性: Rabbit

克隆性: Rabbit Polyclonal

亚型: Immunogen-specific rabbit IgG

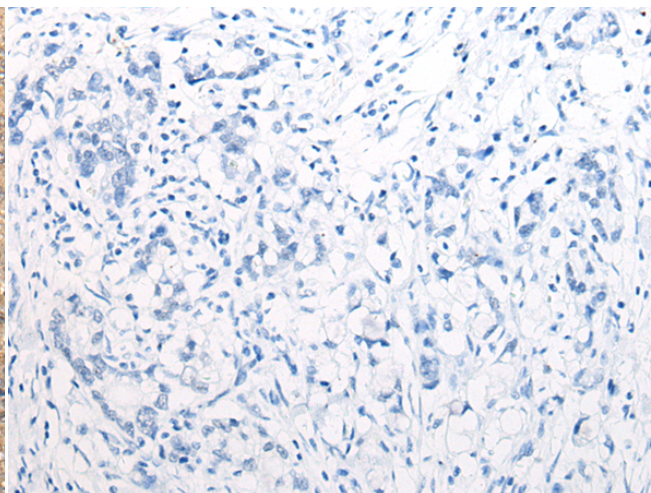
纯化: Antigen affinity purification

种属反应性: Human, Mouse, Rat

成分: PBS (without Mg²⁺ and Ca²⁺), pH 7.4, 150 mM NaCl, 0.05% Sodium Azide and 40% glycerol

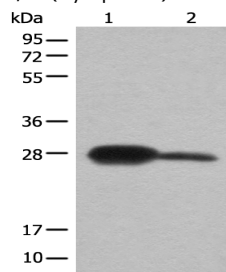
研究领域: Metabolism, Cell Biology, Cardiovascular

储存和运输: Store at -20°C. Avoid repeated freezing and thawing



Immunohistochemistry analysis of paraffin embedded Human liver cancer tissue using 218358(BDH2 Antibody) at a dilution of 1/65(Cytoplasm).

In comparison with the IHC on the left, the same paraffin-embedded Human liver cancer tissue is first treated with the fusion protein and then with 218358(Anti-BDH2 Antibody) at dilution 1/65.



Gel: 12%SDS-PAGE, Lysate: 40 µg;

Lane 1-2: Mouse kidney tissue and A172 cell lysates;

Primary antibody: 218358(BDH2 Antibody) at dilution 1/600;

Secondary antibody: Goat anti rabbit IgG at 1/8000 dilution;

Exposure time: 15 seconds