

## BCL2A1 RABBIT PAB

货号: S216295

产品全名: BCL2A1 兔多抗

基因符号 GRS; ACC1; ACC2; BFL1; ACC-1; ACC-2; HBPA1; BCL2L5

**UNIPROT ID:** Q16548 (Gene Accession - BC016281)

**背景:** This gene encodes a member of the BCL-2 protein family. The proteins of this family form hetero- or homodimers and act as anti- and pro-apoptotic regulators that are involved in a wide variety of cellular activities such as embryonic development, homeostasis and tumorigenesis. The protein encoded by this gene is able to reduce the release of pro-apoptotic cytochrome c from mitochondria and block caspase activation. This gene is a direct transcription target of NF-kappa B in response to inflammatory mediators, and is up-regulated by different extracellular signals, such as granulocyte-macrophage colony-stimulating factor (GM-CSF), CD40, phorbol ester and inflammatory cytokine TNF and IL-1, which suggests a cytoprotective function that is essential for lymphocyte activation as well as cell survival. Alternatively spliced transcript variants encoding different isoforms have been found for this gene.

**抗原:** Fusion protein of human BCL2A1

**经过测试的应用:** ELISA, WB, IHC

**推荐稀释比:** IHC: 50-100; WB: 500-2000; ELISA: 5000-10000

**种属反应性:** Rabbit

**克隆性:** Rabbit Polyclonal

**亚型:** Immunogen-specific rabbit IgG

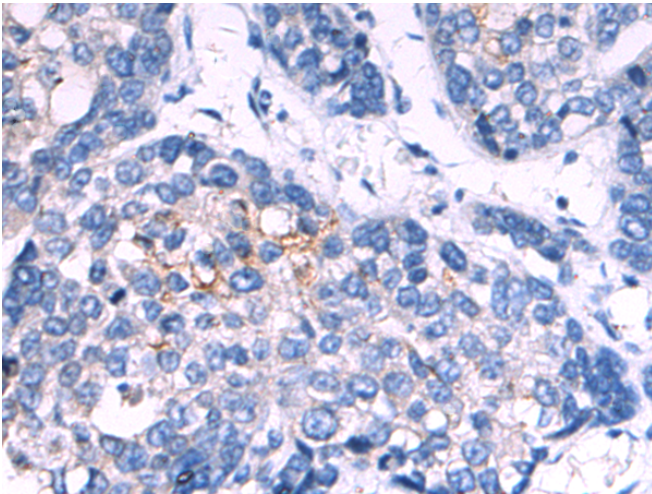
**纯化:** Antigen affinity purification

**种属反应性:** Human

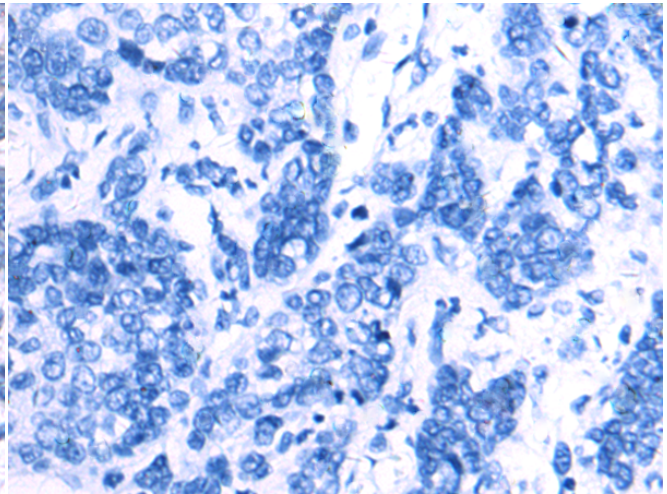
**成分:** PBS (without Mg<sup>2+</sup> and Ca<sup>2+</sup>), pH 7.4, 150 mM NaCl, 0.05% Sodium Azide and 40% glycerol

**研究领域:** Cancer

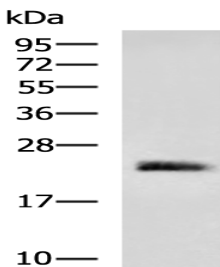
**储存和运输:** Store at -20°C. Avoid repeated freezing and thawing



Immunohistochemistry analysis of paraffin embedded Human liver cancer tissue using 216295(BCL2A1 Antibody) at a dilution of 1/50(Cytoplasm).



In comparison with the IHC on the left, the same paraffin-embedded Human liver cancer tissue is first treated with the fusion protein and then with 216295(Anti-BCL2A1 Antibody) at dilution 1/50.



Gel: 12%SDS-PAGE, Lysate: 40 µg;  
Lane: 293T cell lysate;  
Primary antibody: 216295(BCL2A1 Antibody) at dilution 1/700;  
Secondary antibody: HRP-conjugated Goat anti rabbit IgG at 1/5000 dilution;  
Exposure time: 20 seconds



# Product Description

Pioneering GTPase and Oncogene Product Development since 2010

---