

BCL2 RABBIT PAB

货号: S219669

产品全名: BCL2 兔多抗

基因符号 Bcl-2; PPP1R50

UNIPROT ID: P10415 (Gene Accession - NP_000624)

背景: This gene encodes an integral outer mitochondrial membrane protein that blocks the apoptotic death of some cells such as lymphocytes. Constitutive expression of BCL2, such as in the case of translocation of BCL2 to Ig heavy chain locus, is thought to be the cause of follicular lymphoma. Alternative splicing results in multiple transcript variants.

抗原: Synthetic peptide of human BCL2

经过测试的应用: ELISA, WB, IHC

推荐稀释比: IHC: 30-150;WB: 1000-5000;ELISA: 5000-10000

种属反应性: Rabbit

克隆性: Rabbit Polyclonal

亚型: Immunogen-specific rabbit IgG

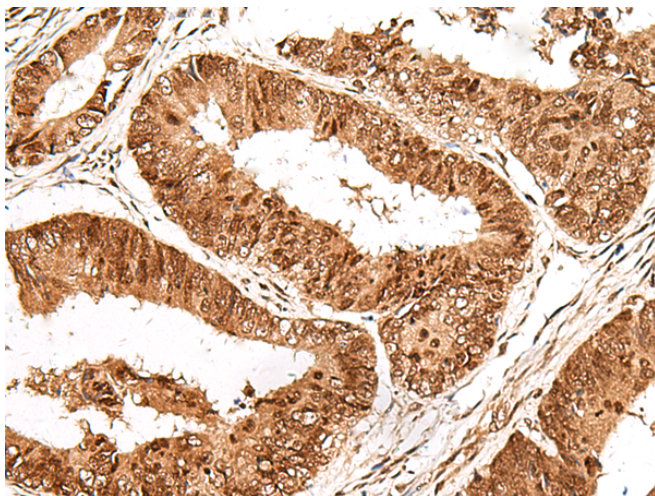
纯化: Antigen affinity purification

种属反应性: Human

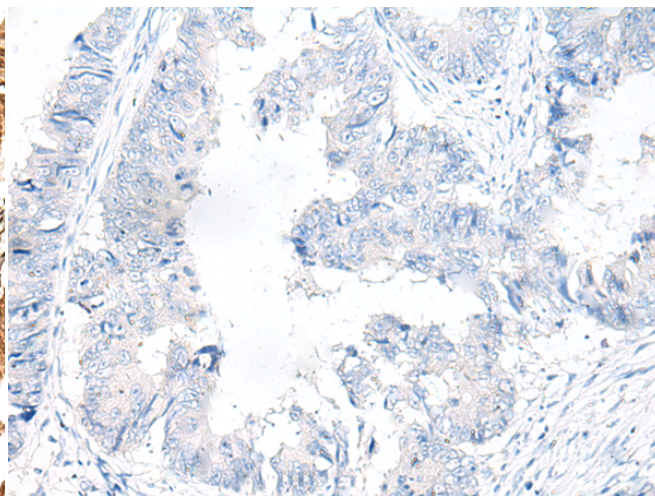
成分: PBS (without Mg²⁺ and Ca²⁺), pH 7.4, 150 mM NaCl, 0.05% Sodium Azide and 40% glycerol

研究领域: Metabolism, Cancer, Cardiovascular

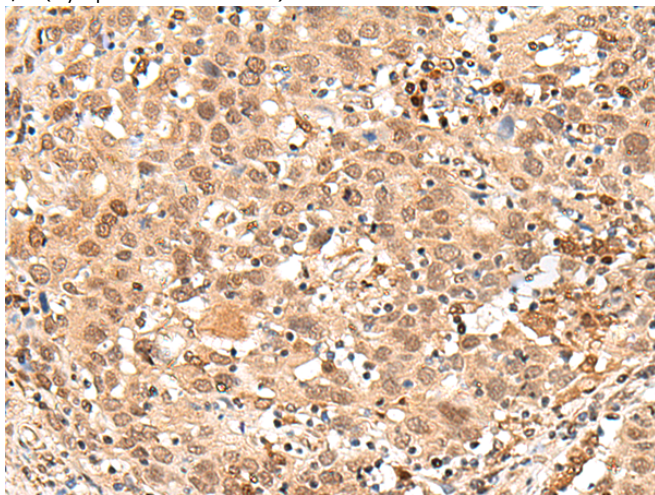
储存和运输: Store at -20°C. Avoid repeated freezing and thawing



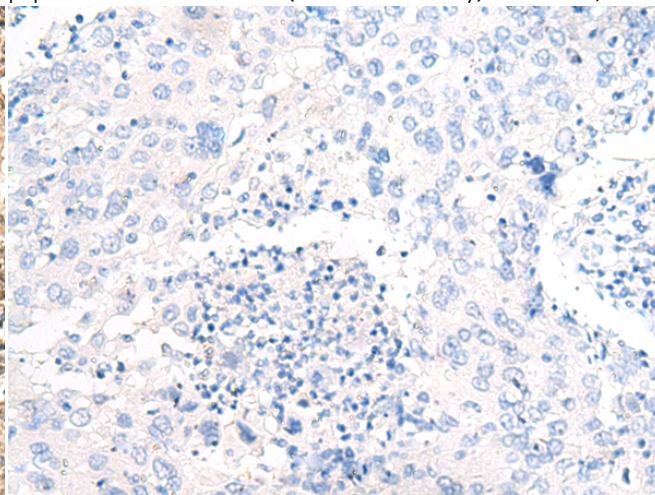
Immunohistochemistry analysis of paraffin embedded Human colorectal cancer tissue using 219669(BCL2 Antibody) at a dilution of 1/20(Cytoplasm and Nucleus).



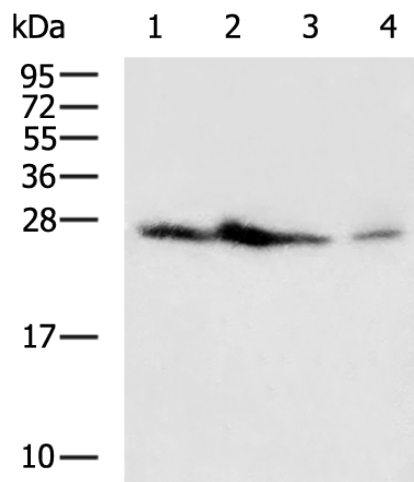
In comparison with the IHC on the left, the same paraffin-embedded Human colorectal cancer tissue is first treated with the synthetic peptide and then with 219669(Anti-BCL2 Antibody) at dilution 1/20.



The image on the left is immunohistochemistry of paraffin-embedded Human cervical cancer tissue using 219669(Anti-BCL2 Antibody) at a dilution of 1/20.



In comparison with the IHC on the left, the same paraffin-embedded Human cervical cancer tissue is first treated with synthetic peptide and then with D260117(Anti-BCL2 Antibody) at dilution 1/20.



Gel: 12%SDS-PAGE, Lysate: 40 µg;
 Lane 1-4: Jurkat, Raji, 293T, MCF-7 cell lysates;
 Primary antibody: 219669(BCL2 Antibody) at dilution 1/1300;
 Secondary antibody: HRP-conjugated Goat anti rabbit IgG at 1/5000 dilution;
 Exposure time: 1 minute



Product Description

Pioneering GTPase and Oncogene Product Development since 2010
