

## BCL2 (3H5) MOUSE MAB

货号: N261288

产品全名: Bcl2 (3H5) 小鼠单抗

基因符号 BCL2; Apoptosis regulator Bcl-2

**UNIPROT ID:** P10415

背景: This gene encodes an integral outer mitochondrial membrane protein that blocks the apoptotic death of some cells such as lymphocytes. Constitutive expression of BCL2, such as in the case of translocation of BCL2 to Ig heavy chain locus, is thought to be the cause of follicular lymphoma.

抗原: Synthetic Peptide of Bcl-2

经过测试的应用: WB,IHC-F,IHC-P,ICC/IF

推荐稀释比: WB: 1/500-1/1000 IHC: 1/50-1/100 IF: 1/50-1/200

种属反应性: Mouse

克隆性: Mouse Monoclonal

克隆编号: 3H5-2H8-1H5

分子量: Calculated MW: 26 kDa; Observed MW: 26 kDa

亚型: IgG1

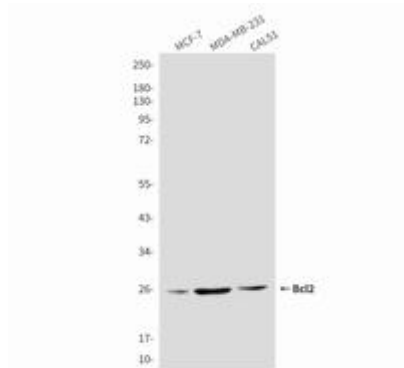
纯化: Affinity Purified

种属反应性: Chicken,Human

成分: PBS (without Mg<sup>2+</sup> and Ca<sup>2+</sup>), pH 7.3 containing 50% glycerol, 0.5% BSA and 0.02% sodium azide

研究领域: Cell Biology

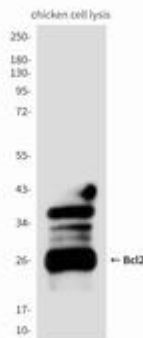
储存和运输: Store at -20°C. Avoid repeated freezing and thawing



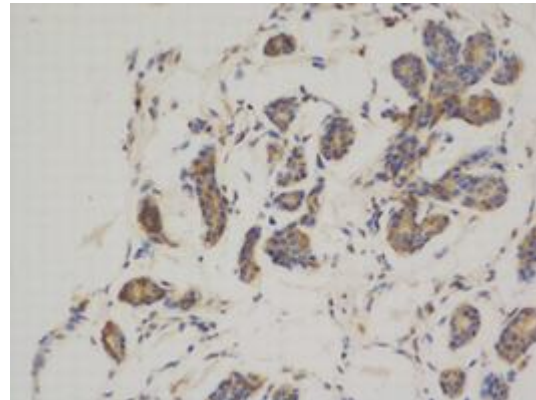
Western blot analysis of Bcl2 in Human breast cancer cell line MCF-7(A), MDAMB231(B) and Cal51(C) using Bcl2 antibody.



Immunohistochemistry analysis of paraffin-embedded Human tonsil tissue using Bcl2 (3H5) antibody. High-pressure and temperature Sodium Citrate pH 6.0 was used for antigen retrieval.



Western blot analysis of Bcl2 (3H5) in chicken lysates using Bcl2 (3H5) antibody



Immunohistochemistry analysis of paraffin-embedded Human breast cancer using Bcl2 (3H5) antibody. High-pressure and temperature Sodium Citrate pH 6.0 was used for antigen retrieval.