

BCL10 RABBIT PAB

货号: S217204

产品全名: BCL10 兔多抗

基因符号: CLAP; mE10; CIPER; c-E10; CARMEN

UNIPROT ID: O95999 (Gene Accession - BC053617)

背景: This gene was identified by its translocation in a case of mucosa-associated lymphoid tissue (MALT) lymphoma. The protein encoded by this gene contains a caspase recruitment domain (CARD), and has been shown to induce apoptosis and to activate NF-kappaB. This protein is reported to interact with other CARD domain containing proteins including CARD9, 10, 11 and 14, which are thought to function as upstream regulators in NF-kappaB signaling. This protein is found to form a complex with MALT1, a protein encoded by another gene known to be translocated in MALT lymphoma.

抗原: Fusion protein of human BCL10

经过测试的应用: ELISA, WB, IHC

推荐稀释比: IHC: 25-100;WB: 500-2000;ELISA: 2000-5000

种属反应性: Rabbit

克隆性: Rabbit Polyclonal

亚型: Immunogen-specific rabbit IgG

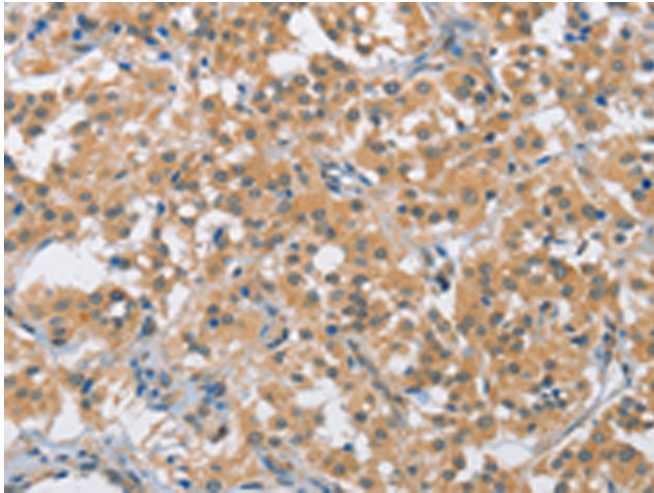
纯化: Antigen affinity purification

种属反应性: Human, Mouse, Rat

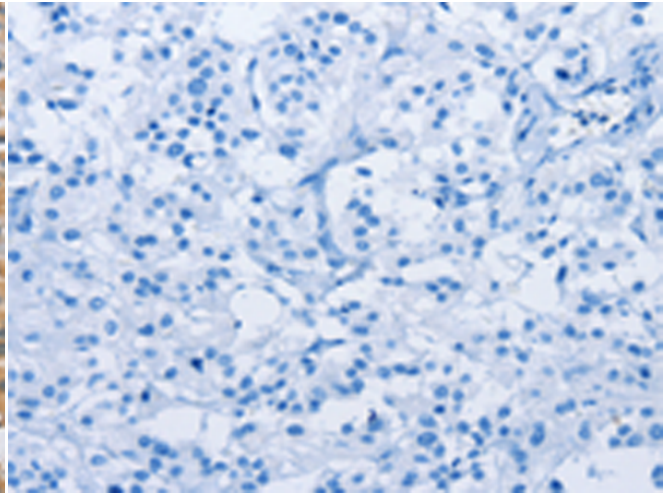
成分: PBS (without Mg²⁺ and Ca²⁺), pH 7.4, 150 mM NaCl, 0.05% Sodium Azide and 40% glycerol

研究领域: Signal Transduction, Cancer

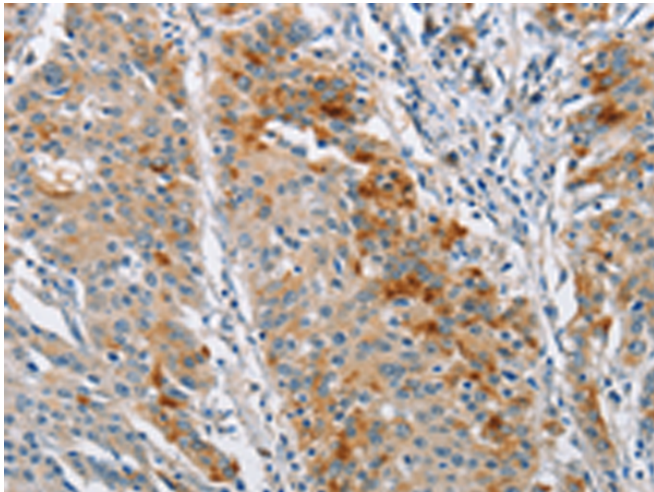
储存和运输: Store at -20°C. Avoid repeated freezing and thawing



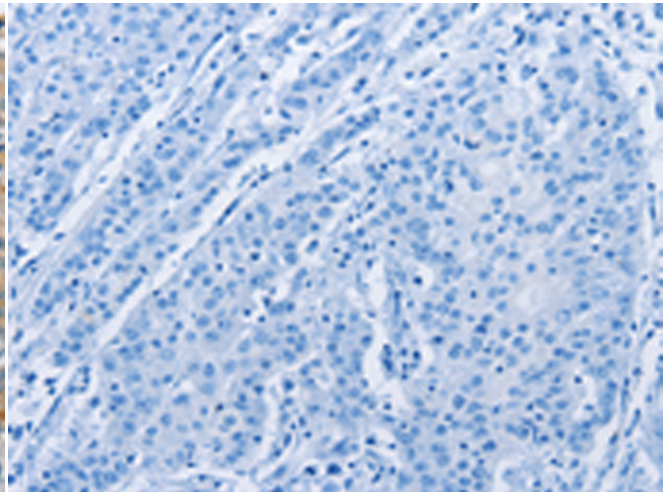
Immunohistochemistry analysis of paraffin embedded Human thyroid cancer tissue using 217204(BCL10 Antibody) at a dilution of 1/40(Cytoplasm).



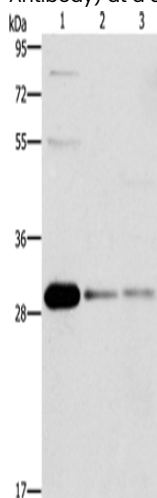
In comparison with the IHC on the left, the same paraffin-embedded Human thyroid cancer tissue is first treated with the fusion protein and then with 217204(Anti-BCL10 Antibody) at dilution 1/40.



The image on the left is immunohistochemistry of paraffin-embedded Human gastric cancer tissue using 217204(Anti-BCL10 Antibody) at a dilution of 1/40.



In comparison with the IHC on the left, the same paraffin-embedded Human gastric cancer tissue is first treated with fusion protein and then with D221979(Anti-BCL10 Antibody) at dilution 1/40.



Gel: 10%SDS-PAGE, Lysate: 40 µg;
Lane 1-3: HepG2 cells, Raji cells, 293T cells;
Primary antibody: 217204(BCL10 Antibody) at dilution 1/950;
Secondary antibody: Goat anti rabbit IgG at 1/8000 dilution;
Exposure time: 40 seconds



Product Description

Pioneering GTPase and Oncogene Product Development since 2010
