

BCL-XL RABBIT MAB

货号: N261917

产品全名: Bcl-XL 兔单克隆抗体

基因符号 BCL2L1; BCL2L2; BCLX; Bcl-2-like protein 1; Bcl2-L-1; Apoptosis regulator Bcl-X

UNIPROT ID: Q07817

背景: The protein encoded by this gene belongs to the BCL-2 protein family. BCL-2 family members form hetero- or homodimers and act as anti- or pro-apoptotic regulators that are involved in a wide variety of cellular activities.

抗原: Recombinant protein of human Bcl-XL

经过测试的应用: WB,IHC-F,IHC-P,ICC/IF,IP

推荐稀释比: WB: 1/500-1/1000 IHC: 1/50-1/100 IF: 1/50-1/200 IP: 1/20

种属反应性: Rabbit

克隆性: Rabbit Monoclonal

克隆编号: R02-2D3

分子量: Calculated MW: 26 kDa; Observed MW: 30 kDa

亚型: IgG

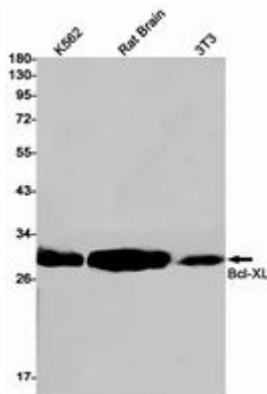
纯化: Affinity Purified

种属反应性: Human, Mouse and Rat

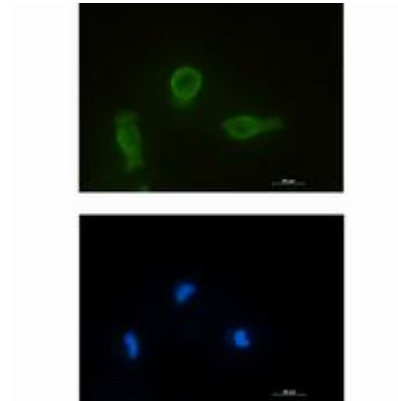
成分: PBS (without Mg²⁺ and Ca²⁺), pH 7.3 containing 50% glycerol, 0.5% BSA and 0.02% sodium azide

研究领域: Cell Biology

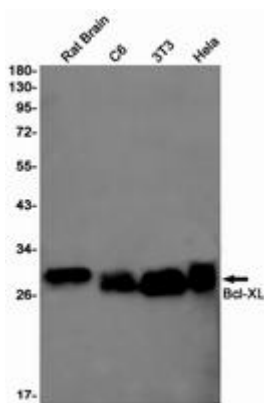
储存和运输: Store at -20°C. Avoid repeated freezing and thawing



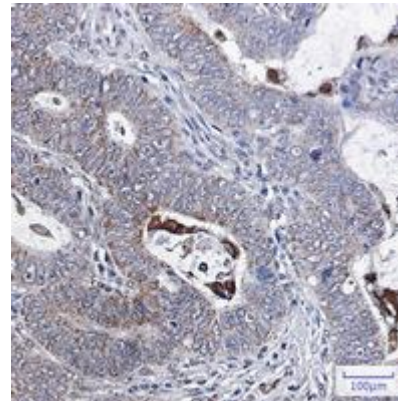
Western blot analysis of Bcl-XL in K562, rat Brain, 3T3 lysates using Bcl-XL antibody



Immunocytochemistry analysis of Bcl-XL (green) in HT-1080 using Bcl-XL antibody, and DAPI (blue).



Western blot analysis of Bcl-XL in rat Brain, C6, 3T3, HeLa lysates using Bcl-XL antibody.



Immunohistochemistry analysis of paraffin-embedded Human colon cancer using Bcl-XL antibody. High-pressure and temperature Sodium Citrate pH 6.0 was used for antigen retrieval.